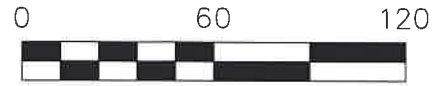


WALNUT CREEK TOWNSHIP
 N.E. QTR. SECTION 4
 T-8 N; R-4 W
 S.E. QTR. SECTION 24
 T-9 N; R-4 W
 HOLMES COUNTY, OHIO

MASTER PLAT

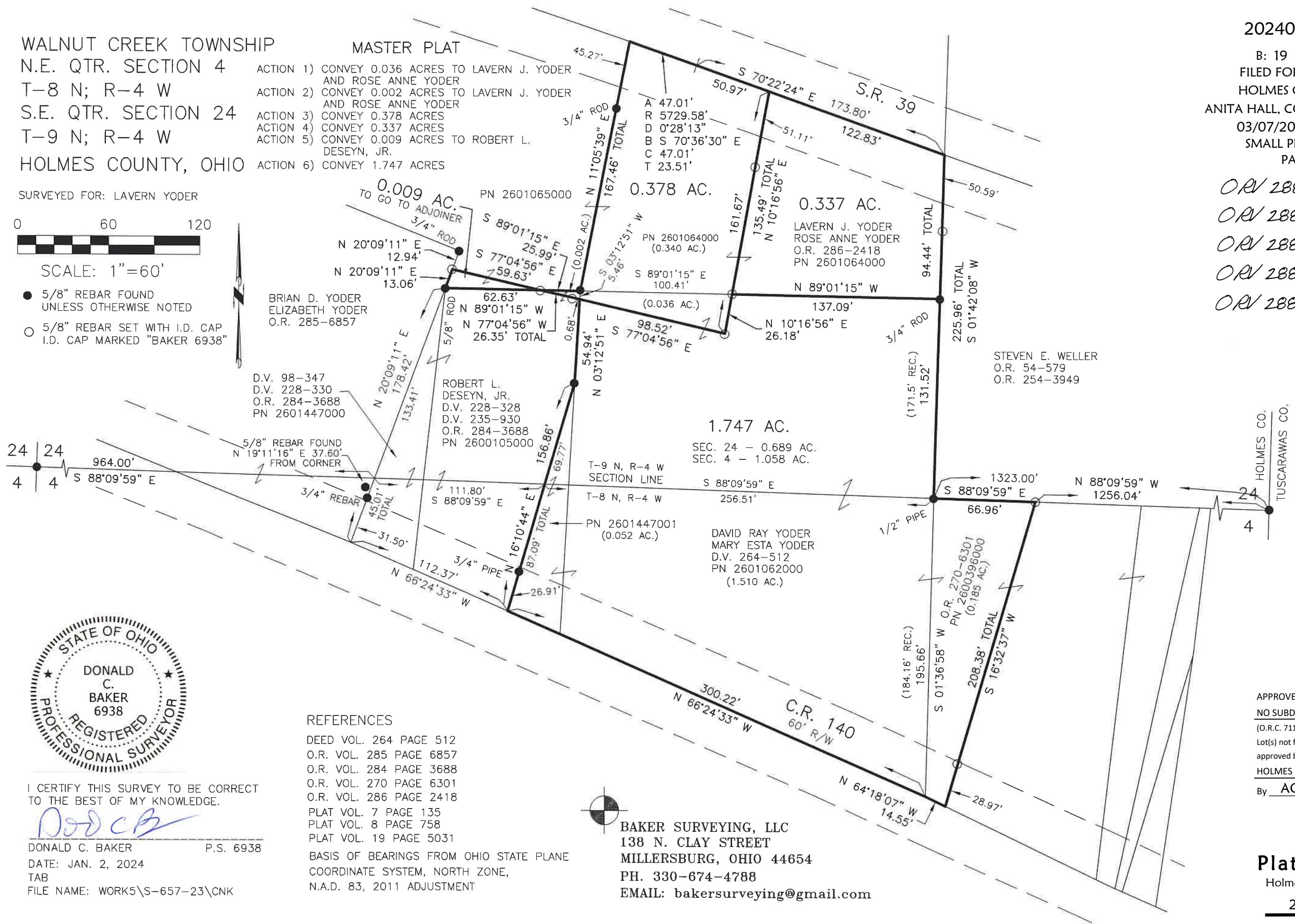
- ACTION 1) CONVEY 0.036 ACRES TO LAVERN J. YODER AND ROSE ANNE YODER
- ACTION 2) CONVEY 0.002 ACRES TO LAVERN J. YODER AND ROSE ANNE YODER
- ACTION 3) CONVEY 0.378 ACRES
- ACTION 4) CONVEY 0.337 ACRES
- ACTION 5) CONVEY 0.009 ACRES TO ROBERT L. DESEYN, JR.
- ACTION 6) CONVEY 1.747 ACRES

SURVEYED FOR: LAVERN YODER



SCALE: 1"=60'

- 5/8" REBAR FOUND UNLESS OTHERWISE NOTED
- 5/8" REBAR SET WITH I.D. CAP I.D. CAP MARKED "BAKER 6938"



20240000885

B: 19 P: 5236
 FILED FOR RECORD IN
 HOLMES COUNTY, OH
 ANITA HALL, COUNTY RECORDER
 03/07/2024 02:17 PM
 SMALL PLAT . 40.00
 PAGES: 1

ORV 288 Pg 1506
 ORV 288 Pg 1509
 ORV 288 Pg 1515
 ORV 288 Pg 1518
 ORV 288 Pg 1521

24 | 24
 4 | 4

HOLMES CO.
 TUSCARAWAS CO.
 24
 4

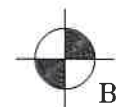


I CERTIFY THIS SURVEY TO BE CORRECT TO THE BEST OF MY KNOWLEDGE.

Donald C. Baker
 DONALD C. BAKER P.S. 6938
 DATE: JAN. 2, 2024
 TAB
 FILE NAME: WORK5\S-657-23\CNK

REFERENCES

- DEED VOL. 264 PAGE 512
- O.R. VOL. 285 PAGE 6857
- O.R. VOL. 284 PAGE 3688
- O.R. VOL. 270 PAGE 6301
- O.R. VOL. 286 PAGE 2418
- PLAT VOL. 7 PAGE 135
- PLAT VOL. 8 PAGE 758
- PLAT VOL. 19 PAGE 5031
- BASIS OF BEARINGS FROM OHIO STATE PLANE COORDINATE SYSTEM, NORTH ZONE, N.A.D. 83, 2011 ADJUSTMENT



BAKER SURVEYING, LLC
 138 N. CLAY STREET
 MILLERSBURG, OHIO 44654
 PH. 330-674-4788
 EMAIL: bakersurveying@gmail.com

APPROVED FOR TRANSFER ONLY
 NO SUBDIVISION PLAT REQUIRED
 (O.R.C. 711.001 & 711.131)
 Lot(s) not for building unless approved by Board of Health
 HOLMES CO. PLANNING COMMISSION
 By AO Date 2/9/2024



Plat Approved
 Holmes County Map Office
 2/8/2024 Rg