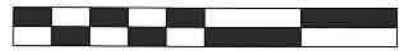


KNOX TOWNSHIP  
 N.E. QTR. SECTION 20  
 T-19 N; R-15 W  
 HOLMES COUNTY, OHIO

SURVEYED FOR: HOLMES COUNTY ENGINEER

0 60 120



SCALE: 1"=60'

- 5/8" REBAR FOUND UNLESS OTHERWISE NOTED
- 5/8" REBAR SET WITH I.D. CAP
- I.D. CAP MARKED "BAKER SURVEYING LLC"

REFERENCES

- DEED VOL. 227 PAGE 297
- DEED VOL. 216 PAGE 875
- O.R. VOL. 286 PAGE 4160
- PLAT VOL. 11 PAGE 1
- PLAT VOL. 13 PAGE 27
- PLAT VOL. 2 PAGE 606
- PLAT VOL. 2 PAGE 621
- UNRECORDED PLAT BY JAMIE D. DARR DATED NOV. 20, 2009
- UNRECORDED PLAT BY AARON L. GERBER DATED SEPT. 6, 2022

BASIS OF BEARINGS FROM OHIO STATE PLANE  
 COORDINATE SYSTEM, NORTH ZONE,  
 N.A.D. 83, 2011 ADJUSTMENT

MASTER PLAT

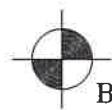
- ACTION 1) CONVEY 0.688 ACRES TO ADJOINER
- ACTION 2) CONVEY 1.140 ACRES



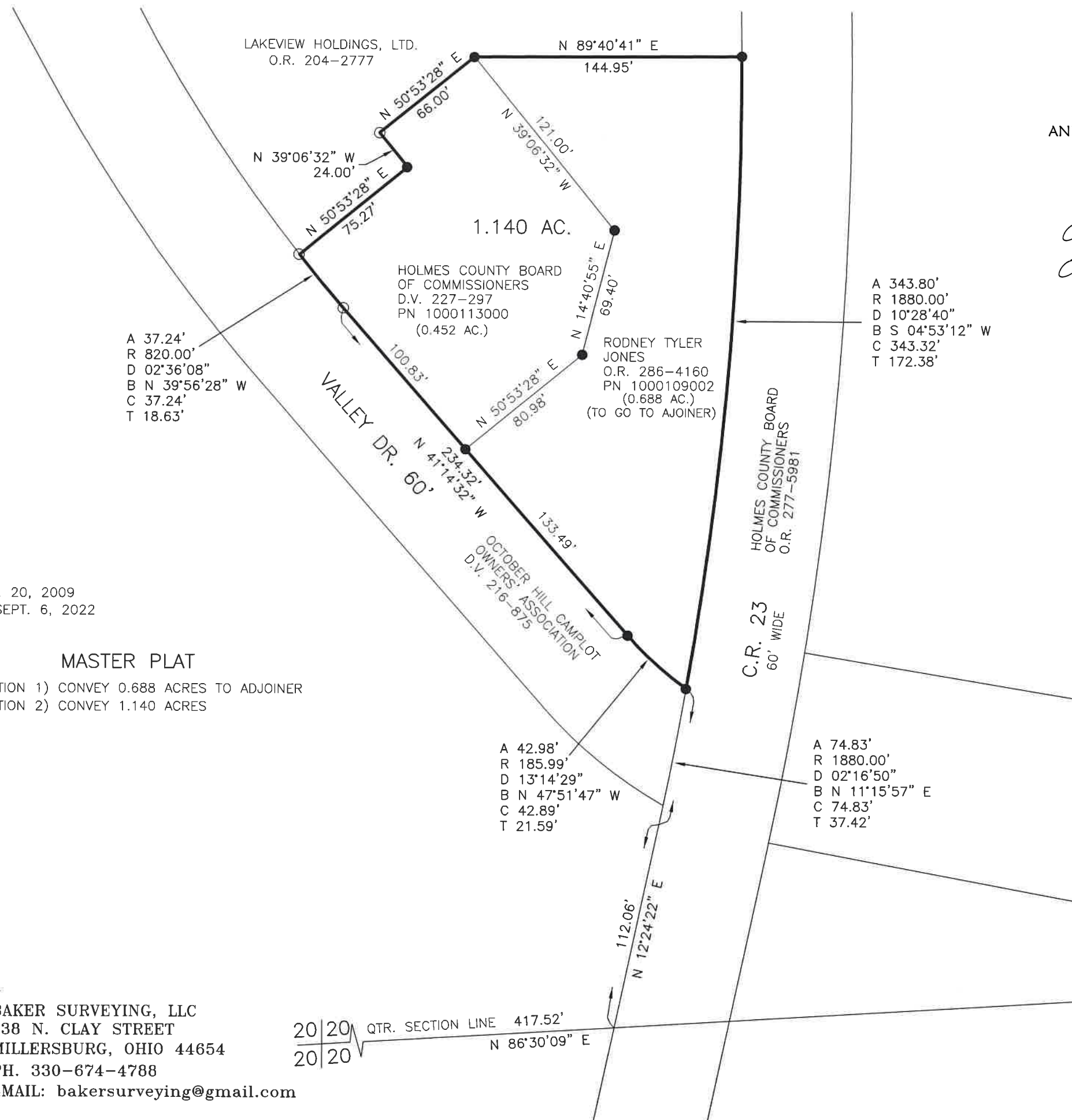
I CERTIFY THIS SURVEY TO BE CORRECT TO THE BEST OF MY KNOWLEDGE.

*AL*

AARON L. GERBER P.S. 8379  
 DATE: JAN. 16, 2024  
 ALG  
 FILE NAME: WORK5\S-14-24\CNK



BAKER SURVEYING, LLC  
 138 N. CLAY STREET  
 MILLERSBURG, OHIO 44654  
 PH. 330-674-4788  
 EMAIL: bakersurveying@gmail.com



20240000860

B: 19 P: 5234  
 FILED FOR RECORD IN  
 HOLMES COUNTY, OH  
 ANITA HALL, COUNTY RECORDER  
 03/06/2024 12:08 PM  
 CNTY SM PLT . 0.00  
 PAGES: 1

*ORV 288 Pg 1372*  
*ORV 288 Pg 1376*

A 343.80'  
 R 1880.00'  
 D 10°28'40"  
 B S 04°53'12" W  
 C 343.32'  
 T 172.38'

A 42.98'  
 R 185.99'  
 D 13°14'29"  
 B N 47°51'47" W  
 C 42.89'  
 T 21.59'

A 74.83'  
 R 1880.00'  
 D 02°16'50"  
 B N 11°15'57" E  
 C 74.83'  
 T 37.42'

APPROVED FOR TRANSFER ONLY  
 NO SUBDIVISION PLAT REQUIRED  
 (O.R.C. 711.001 & 711.131)  
 Lot(s) not for building unless approved by Board of Health  
 HOLMES CO. PLANNING COMMISSION  
 By TS Date 2/13/2024



**Plat Approved**  
 Holmes County Map Office  
 2/13/2024 MM