

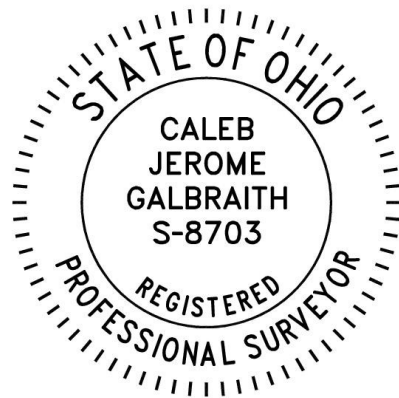
Berlin Township
1st Qtr. Lot 22
T-9 N; R-6 W
Holmes County, Ohio

SURVEYED FOR: Ben Raber

REFERENCES:
 Deeds as shown

Plat Vol. 05 Page 130
 Plat Vol. 07 Page 175
 Plat Vol. 18 Page 570
 Plat Vol. 19 Page 4880

Basis of Bearing Grid North, Ohio State Plane
 Coordinate System, North Zone, NAD 83

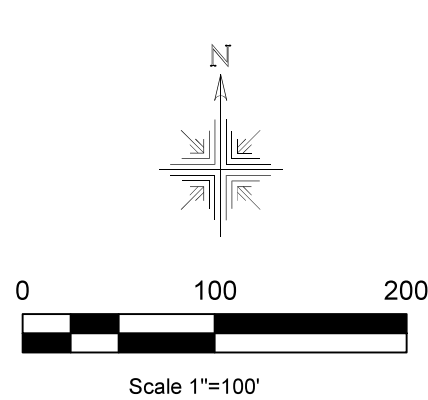


I certify this survey to be correct to the best of
 my knowledge.

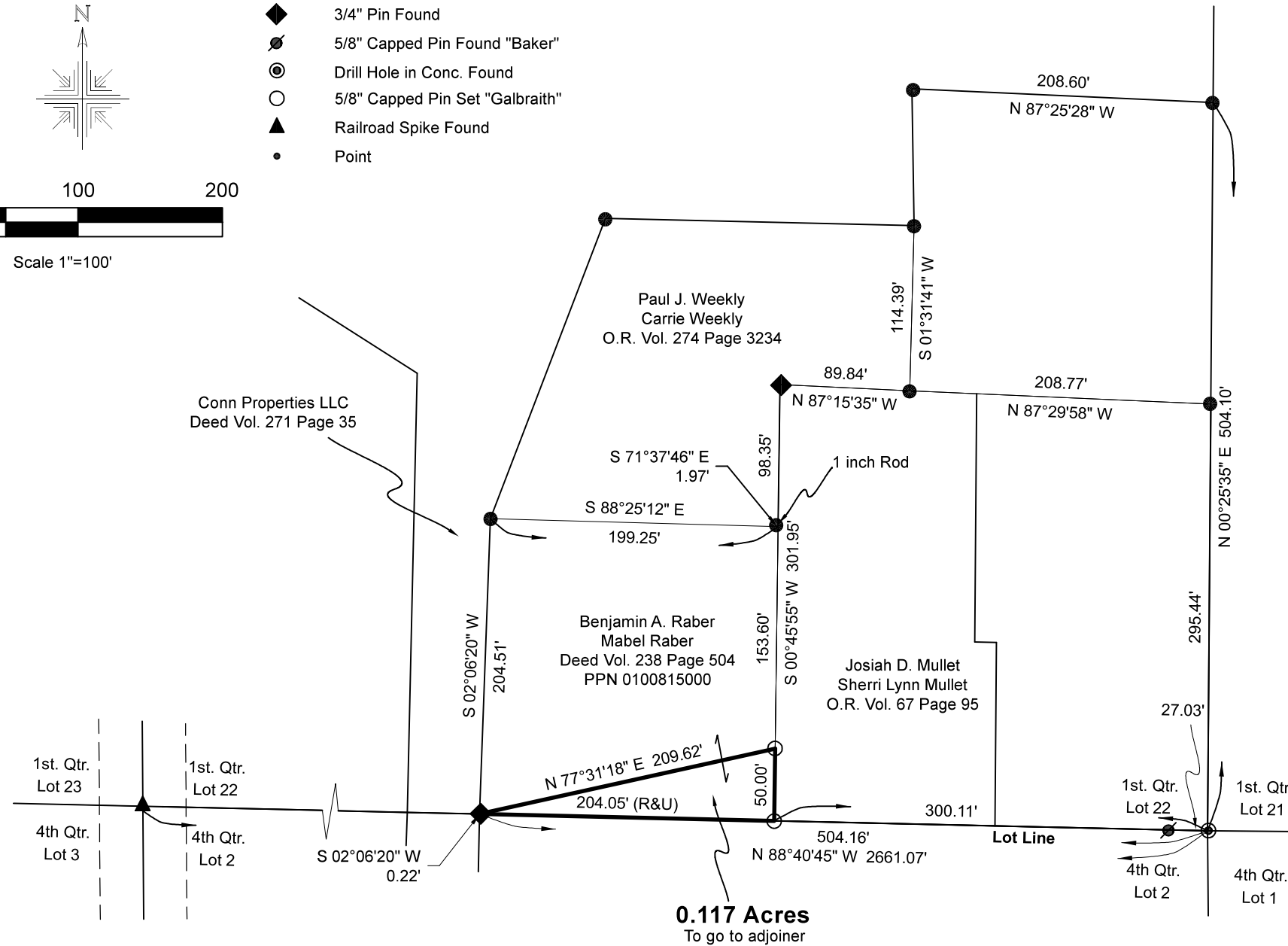
Caleb Galbraith

Caleb Jerome Galbraith P.S. 8703
 Date: Sept 12, 2023
 Job ID:15923-B13A

Pioneer Surveying & Services, LLC.
 5434 Township Road 377
 Millersburg, Ohio 44654
 Phone: 330-231-0497
 Email: caleb@pioneersurveyingandservices.com



- 5/8" Pin Found unless noted
- ◆ 3/4" Pin Found
- ⊙ 5/8" Capped Pin Found "Baker"
- ⊙ Drill Hole in Conc. Found
- 5/8" Capped Pin Set "Galbraith"
- ▲ Railroad Spike Found
- Point



202300004921
 B: 19 P: 5163
 FILED FOR RECORD IN
 HOLMES COUNTY, OH
 ANITA HALL, COUNTY RECORDER
 12/11/2023 12:59 PM
 SMALL PLAT . 40.00
 PAGES: 1

ORV 287 Pg 3373

APPROVED FOR TRANSFER ONLY
 NO SUBDIVISION PLAT REQUIRED
 (O.R.C. 711.001 & 711.131)
 Lot(s) not for building unless
 approved by Board of Health
 HOLMES CO. PLANNING COMMISSION
 By AO Date 10/13/2023



Plat Approved
 Holmes County Map Office
10/13/2023 MM