

Berlin Township
S.E. Qtr. Sec. 4
S.W Qtr. Sec. 4
T-9 N; R-5 W
Holmes County, Ohio

20230004622
 B: 19 P: 5149
 FILED FOR RECORD IN
 HOLMES COUNTY, OH
 ANITA HALL, COUNTY RECORDER
 11/17/2023 11:20 AM
 SMALL PLAT . 40.00
 PAGES: 1

SURVEYED FOR: Wayne Miller

REFERENCES:
 Deeds as shown

- Plat Vol. 08 Page 549
- Plat Vol. 17 Page 689
- Plat Vol. 12 Page 873
- Plat Vol. 10 Page 270
- Plat Vol. 19 Page 3302
- Plat Vol. 19 Page 2244
- Plat Vol. 19 Page 4506
- Plat Vol. 19 Page 2094
- Plat Vol. 18 Page 86
- Plat Vol. 18 Page 401

Basis of Bearing Grid North, Ohio State Plane
 Coordinate System, North Zone, NAD 83



Scale 1"=200'

- ▲ P.K. Nail Found
- ▼ Railroad Spike Found
- 5/8" Capped Pin Found "Shamp"
- 5/8" Rebar Found
- ◆ 3/4" Rebar Found
- ◆ 5/8" Capped Pin Found "Baker"
- 5/8" Capped Pin Set "Galbraith"
- Point



I certify this survey to be correct to the best of
 my knowledge.

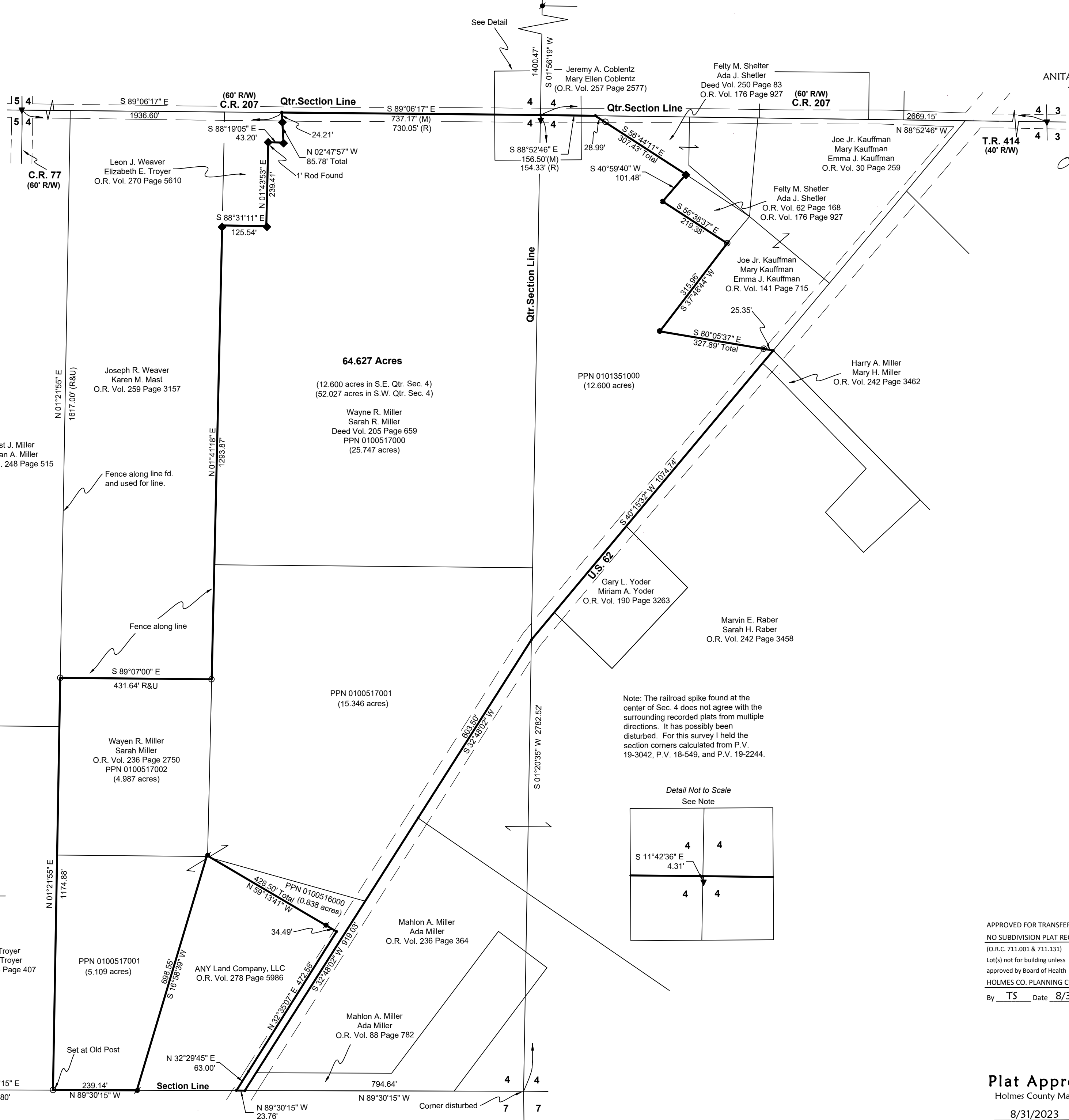
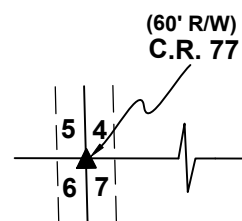
Caleb Galbraith

Caleb Jerome Galbraith P.S. 8703
 Date: August 2, 2023
 Job ID: 13723-B20

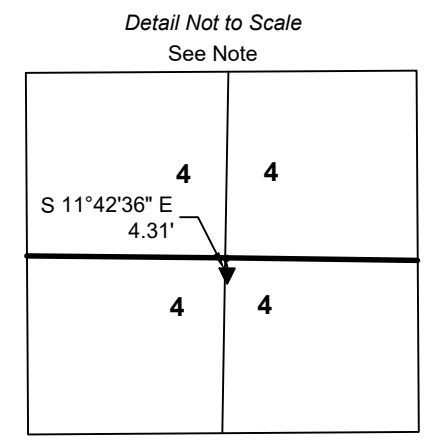
Pioneer Surveying & Services, LLC.
 5434 Township Road 377
 Millersburg, Ohio 44654
 Phone: 330-231-0497
 Email: caleb@pioneersurveyingandservices.com



Roy L. Troyer
 Alma J. Troyer
 O.R. Vol. 76 Page 407



Note: The railroad spike found at the center of Sec. 4 does not agree with the surrounding recorded plats from multiple directions. It has possibly been disturbed. For this survey I held the section corners calculated from P.V. 19-3042, P.V. 18-549, and P.V. 19-2244.



APPROVED FOR TRANSFER ONLY
 NO SUBDIVISION PLAT REQUIRED
 (O.R.C. 711.001 & 711.131)
 Lot(s) not for building unless
 approved by Board of Health
 HOLMES CO. PLANNING COMMISSION
 By TS Date 8/31/2023

Plat Approved
 Holmes County Map Office
 8/31/2023 MM

O.R. 287 Pg 2165