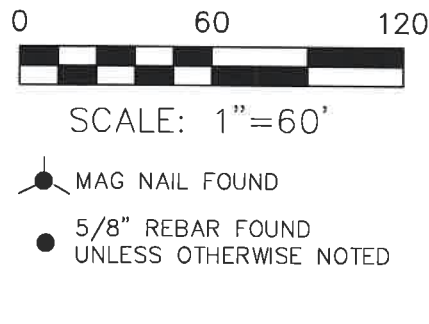


SALT CREEK TOWNSHIP
 4TH QTR., LOT 13
 T-10 N; R-6 W
 HOLMES COUNTY, OHIO
 SURVEYED FOR: MERVIN A. YODER



202300003843
 B: 19 P: 5108
 FILED FOR RECORD IN
 HOLMES COUNTY, OH
 ANITA HALL, COUNTY RECORDER
 09/22/2023 08:54 AM
 SMALL PLAT . 40.00
 PAGES: 1

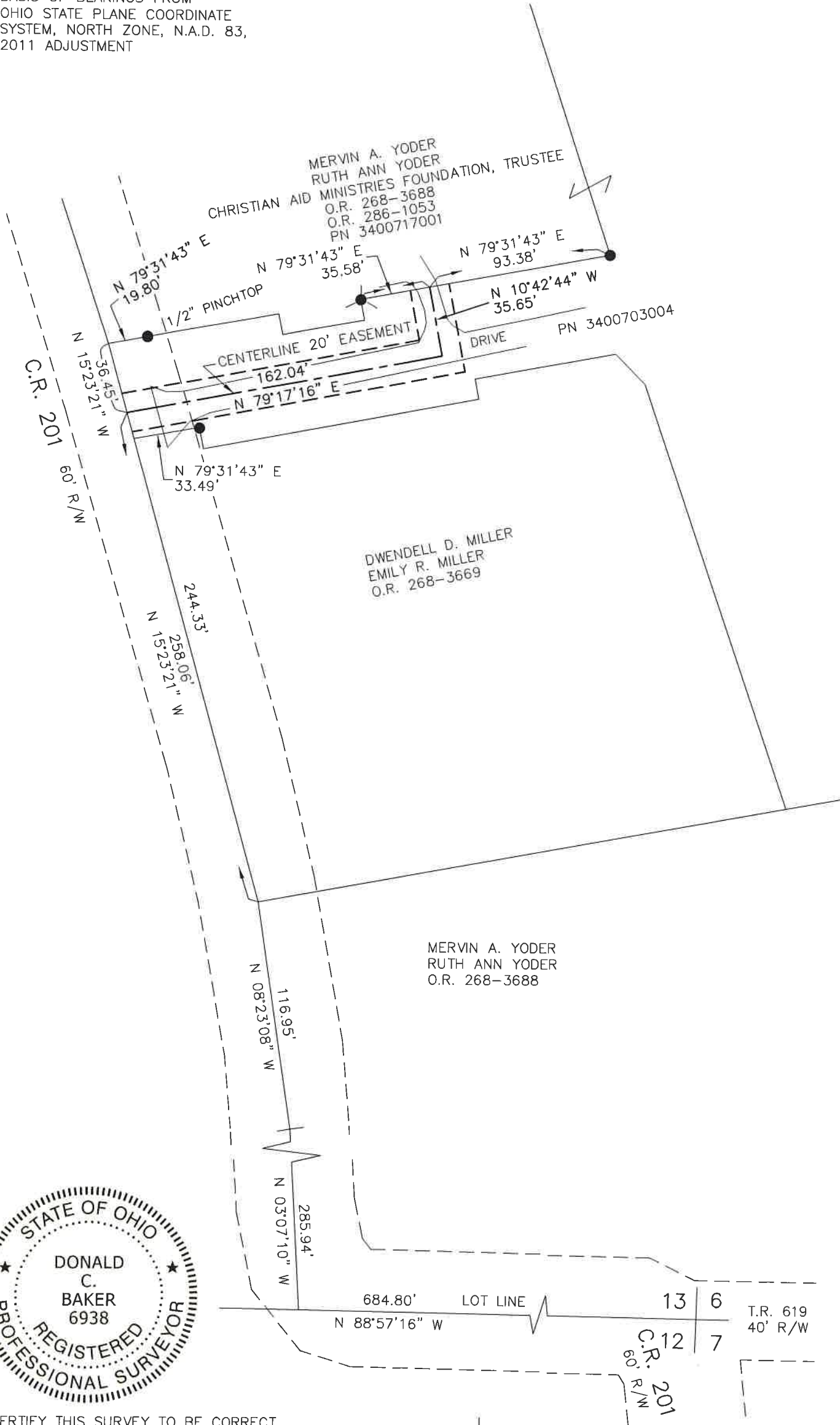
ORV 286 Pg 5969

REFERENCES

O.R. VOL. 268 PAGE 3669
 O.R. VOL. 268 PAGE 1053
 PLAT VOL. 19 PAGE 3798

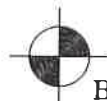
EASEMENT SURVEY

BASIS OF BEARINGS FROM
 OHIO STATE PLANE COORDINATE
 SYSTEM, NORTH ZONE, N.A.D. 83,
 2011 ADJUSTMENT



I CERTIFY THIS SURVEY TO BE CORRECT
 TO THE BEST OF MY KNOWLEDGE.

Donald C. Baker
 DONALD C. BAKER P.S. 6938
 DATE: AUG. 11, 2023
 KES
 FILE NAME: WORK6\S-458-23\CNK



BAKER SURVEYING, LLC
 138 N. CLAY STREET
 MILLERSBURG, OHIO 44654
 PH. 330-674-4788
 EMAIL: bakersurveying@gmail.com

Holmes County Planning Commission
 Viewed only for the internal use of
 county departments. Stamp shall not
 be considered an endorsement of
 compliance with county subdivision
 regulations.

Plat Approved
 Holmes County Map Office
 9/1/2023 MM