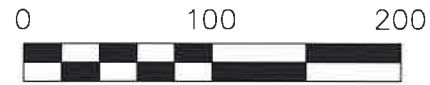


PRAIRIE TOWNSHIP  
 S.E. QTR. SECTION 12  
 T-13 N; R-13 W  
 HOLMES COUNTY, OHIO

SURVEYED FOR: JONAS HOCHSTETLER



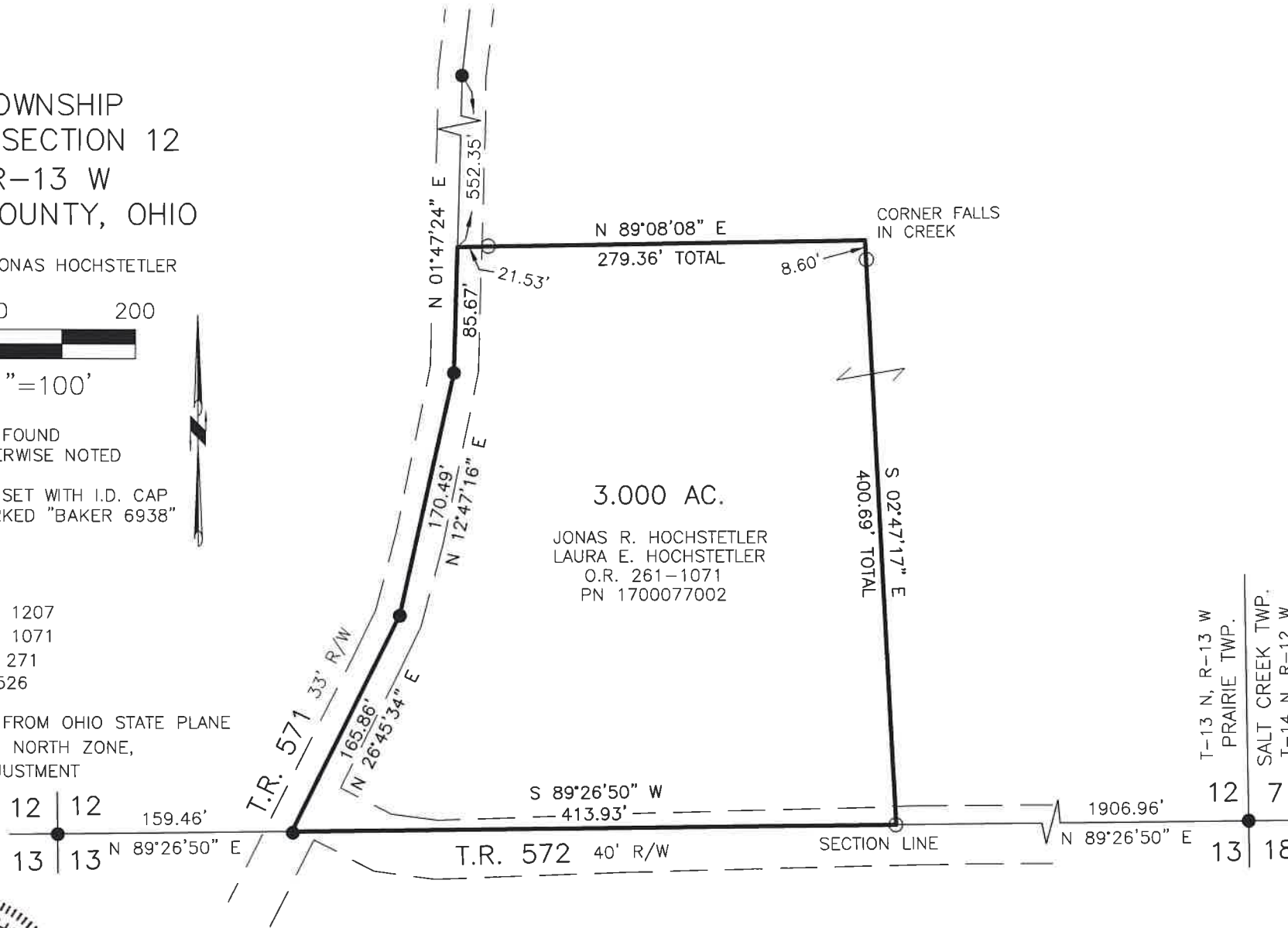
SCALE: 1"=100'

- 5/8" REBAR FOUND  
UNLESS OTHERWISE NOTED
- 5/8" REBAR SET WITH I.D. CAP  
I.D. CAP MARKED "BAKER 6938"

REFERENCES

O.R. VOL. 263 PAGE 1207  
 O.R. VOL. 261 PAGE 1071  
 PLAT VOL. 16 PAGE 271  
 PLAT VOL. 2 PAGE 526

BASIS OF BEARINGS FROM OHIO STATE PLANE  
 COORDINATE SYSTEM, NORTH ZONE,  
 N.A.D. 83, 2011 ADJUSTMENT



202300002844

B: 19 P: 5040  
 FILED FOR RECORD IN  
 HOLMES COUNTY, OH  
 ANITA HALL, COUNTY RECORDER  
 07/17/2023 03:14 PM  
 SMALL PLAT . 40.00  
 PAGES: 1

*ORV 286 Pg 1061*

3.000 AC.  
 JONAS R. HOCHSTETLER  
 LAURA E. HOCHSTETLER  
 O.R. 261-1071  
 PN 1700077002

APPROVED FOR TRANSFER ONLY  
 NO SUBDIVISION PLAT REQUIRED

(O.R.C. 711.001 & 711.131)

Lot(s) not for building unless  
 approved by Board of Health



HOLMES CO. PLANNING COMMISSION

By AO Date 7/14/2023



I CERTIFY THIS SURVEY TO BE CORRECT  
 TO THE BEST OF MY KNOWLEDGE.

*Donald C. Baker*  
 DONALD C. BAKER P.S. 6938  
 DATE: APRIL 17, 2023  
 KES  
 FILE NAME: WORK5\S-215-23\CNK



BAKER SURVEYING, LLC  
 138 N. CLAY STREET  
 MILLERSBURG, OHIO 44654  
 PH. 330-674-4788  
 EMAIL: bakersurveying@gmail.com

**Plat Approved**

Holmes County Map Office

7/5/2023 MM