

MECHANIC TOWNSHIP
S.W. QTR. SECTION 20
T-8 N; R-6 W
HOLMES COUNTY, OHIO

SURVEYED FOR: ELI BARKMAN

0 300 600



SCALE: 1" = 300'

- STONE FOUND
- 5/8" REBAR FOUND
UNLESS OTHERWISE NOTED
- 5/8" REBAR SET WITH I.D. CAP
I.D. CAP MARKED "BAKER
SURVEYING LLC"

REFERENCES

- O.R. VOL. 180 PAGE 2825
- O.R. VOL. 178 PAGE 3011
- O.R. VOL. 277 PAGE 3526
- PLAT VOL. 19 PAGE 428
- PLAT VOL. 19 PAGE 589

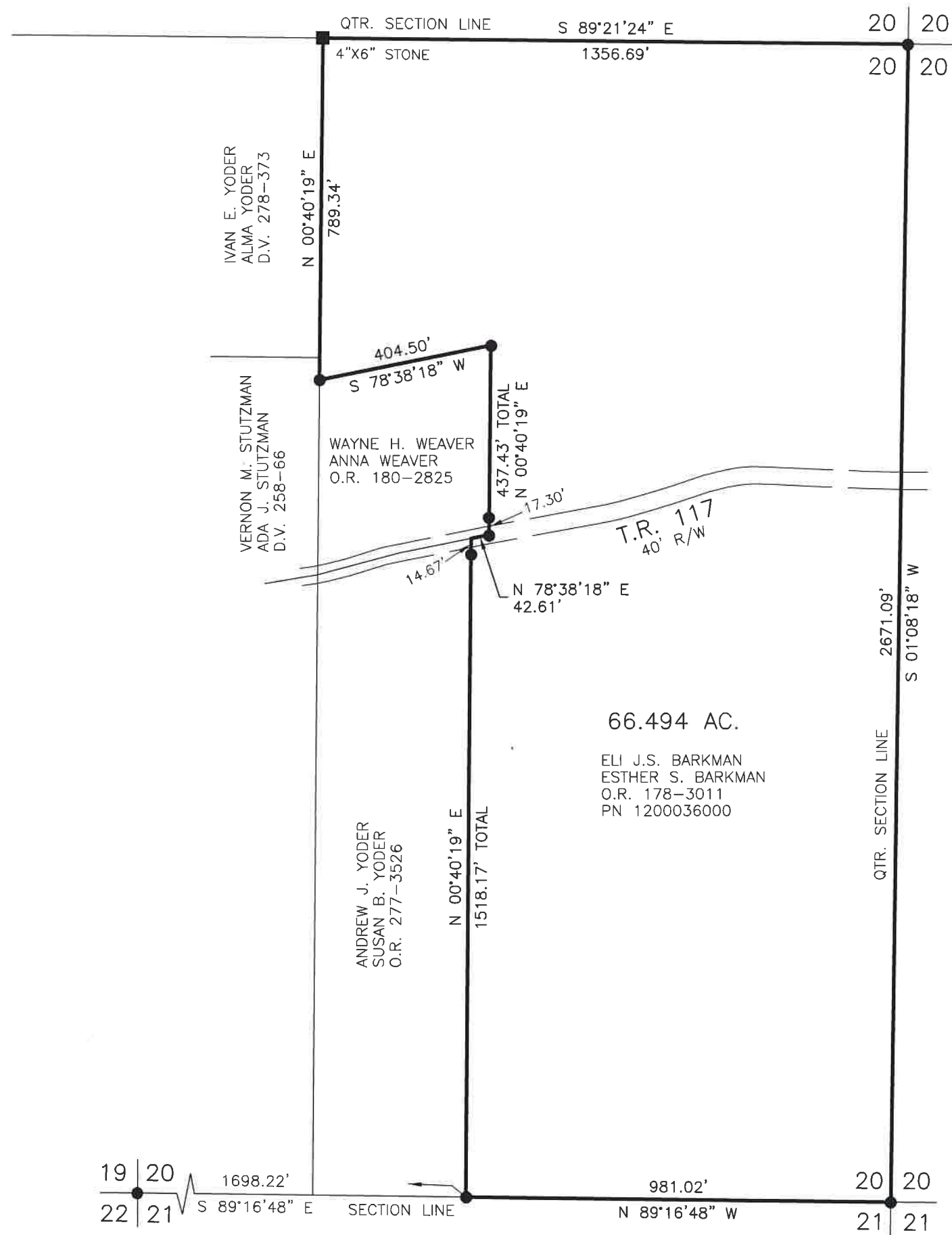
BASIS OF BEARINGS FROM OHIO STATE PLANE
COORDINATE SYSTEM, NORTH ZONE,
N.A.D. 83, 2011 ADJUSTMENT



I CERTIFY THIS SURVEY TO BE CORRECT
TO THE BEST OF MY KNOWLEDGE.

AL

AARON L. GERBER P.S. 8379
DATE: JUNE 9, 2023
TAB\GRB
FILE NAME: WORK5\S-325-23\CNK



202300002766

B: 19 P: 5032
FILED FOR RECORD IN
HOLMES COUNTY, OH
ANITA HALL, COUNTY RECORDER
07/11/2023 12:04 PM
SMALL PLAT . 40.00
PAGES: 1

ORV 286 Pg 687

APPROVED FOR TRANSFER ONLY
NO SUBDIVISION PLAT REQUIRED
(O.R.C. 711.001 & 711.131)
Lot(s) not for building unless
approved by Board of Health
HOLMES CO. PLANNING COMMISSION
By TS Date 6/30/2023



Plat Approved
Holmes County Map Office
6/29/2023 MM