

**Village of Millersburg
Part of Out Lot 7
Part of Lot 752**

**Hardy Township
T-9 N, R-7 W
Sec. 11 & 12
Holmes County, Ohio**

SURVEYED FOR: Barb Snyder

202300002356

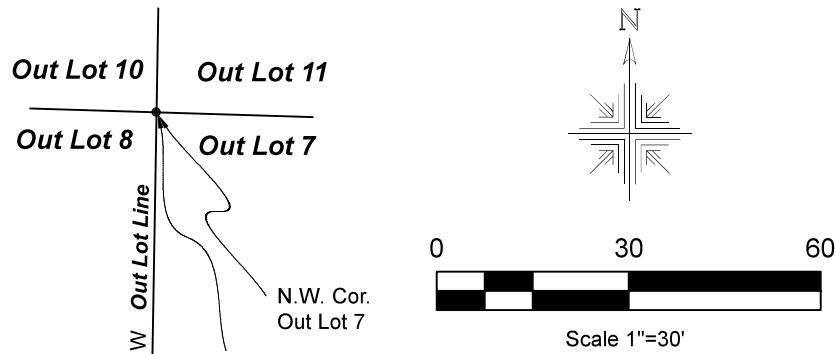
B: 19 P: 5017
FILED FOR RECORD IN
HOLMES COUNTY, OH
ANITA HALL, COUNTY RECORDER
06/13/2023 02:24 PM
SMALL PLAT . 40.00
PAGES: 1

OR 285 Pg 6019

REFERENCES:
Deeds as shown

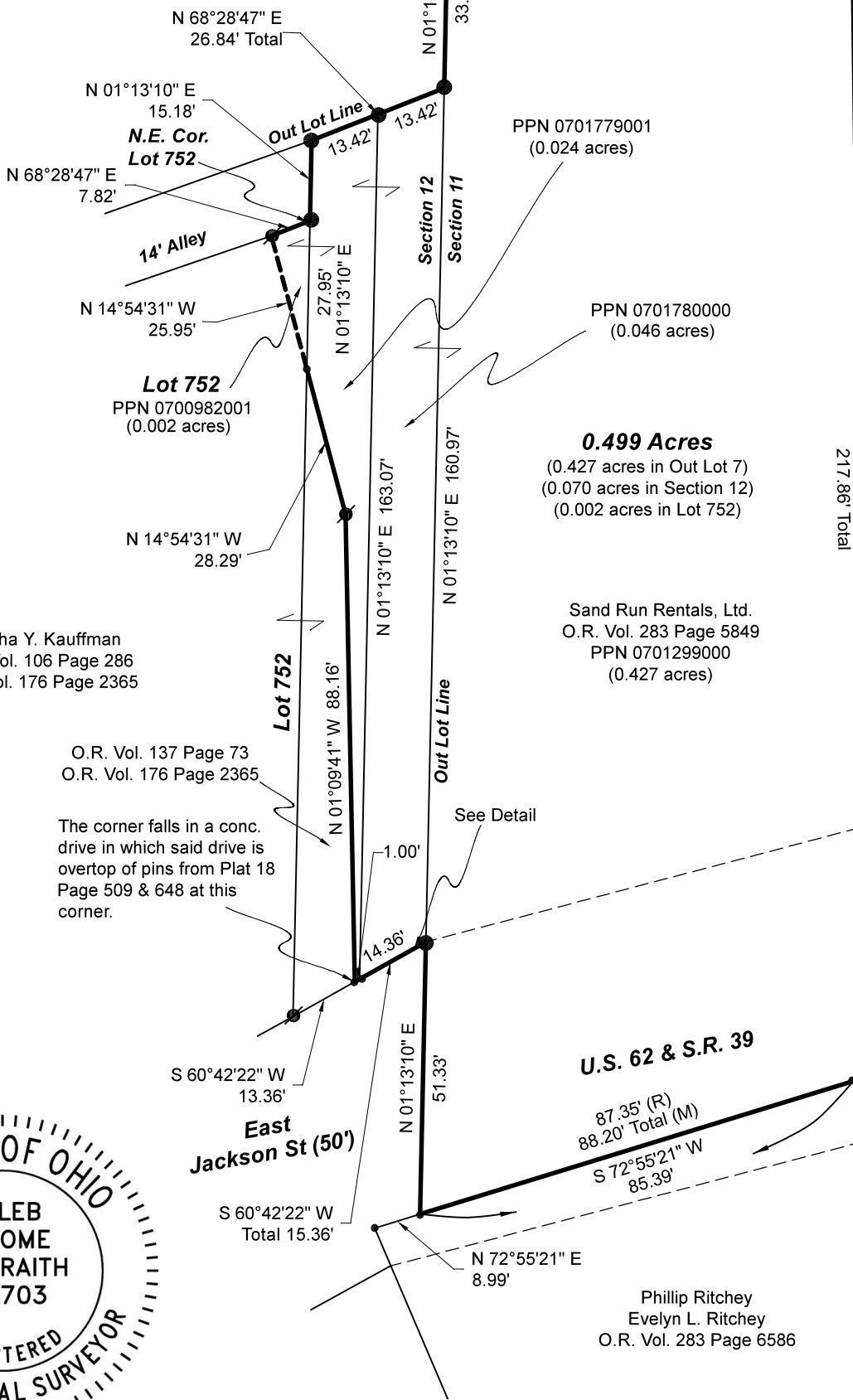
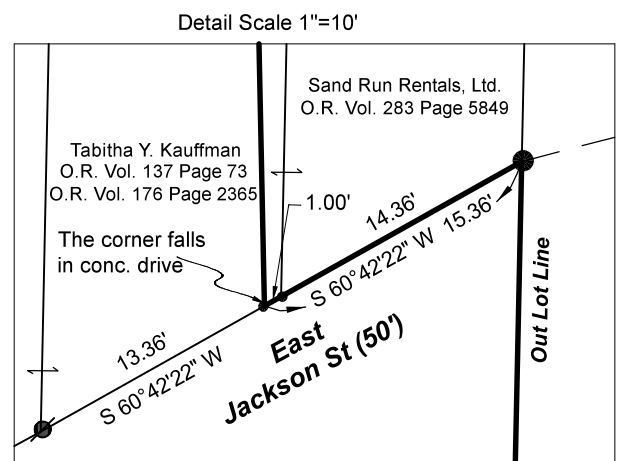
Plat Vol. 18 Page 509
Plat Vol. 19 Page 3305
Plat Vol. 16 Page 270

Basis of Bearing from Grid North,
Ohio State Plane Coordinate System,
North Zone, NAD 83.



- ◆ 3/4" Rebar Found
- ⊙ Pipe Found
- ⊙ 5/8" Capped Pin Found "Baker"
- 5/8" Rebar Found unless noted
- Point

Brambly Hedge Knoll Condominium
Deed Vol. 276 Page 35
Deed Vol. 276 Page 39
O.R. Vol. 184 Page 3100
O.R. Vol. 199 Page 888



I certify this survey to be correct to the best of my knowledge.

Caleb Jerome Galbraith
Caleb Jerome Galbraith P.S. 8703
Date: December 21, 2022
Job ID: 20122-MV4/5
Pioneer Surveying & Services, LLC.
5434 Township Road 377
Millersburg, Ohio 44654
Phone: 330-231-0497
Email: caleb@pioneersurveyingandservices.com

APPROVED FOR TRANSFER ONLY
NO SUBDIVISION PLAT REQUIRED
(O.R.C. 711.001 & 711.131)
Lot(s) not for building unless approved by Board of Health
HOLMES CO. PLANNING COMMISSION
By TS Date 1/11/2023



Plat Approved
Holmes County Map Office
1/11/2023 BH