

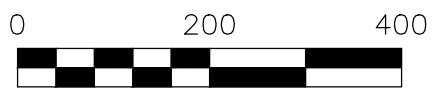
WALNUT CREEK TOWNSHIP  
 N.E. & S.E. QTRS. SECTION 18  
 3RD. QTR., LOTS 5 & 6  
 T-9 N; R-5 W  
 HOLMES COUNTY, OHIO

SURVEYED FOR: PAUL BEACHY

REFERENCES

- |                         |                        |
|-------------------------|------------------------|
| DEED VOL. 189 PAGE 513  | PLAT VOL. 3 PAGE 50B   |
| DEED VOL. 202 PAGE 428  | PLAT VOL. 5 PAGE 30    |
| DEED VOL. 220 PAGE 25   | PLAT VOL. 7 PAGE 378   |
| DEED VOL. 266 PAGE 73   | PLAT VOL. 7 PAGE 472   |
| O.R. VOL. 50 PAGE 453   | PLAT VOL. 8 PAGE 230   |
| O.R. VOL. 50 PAGE 457   | PLAT VOL. 8 PAGE 810   |
| O.R. VOL. 161 PAGE 369  | PLAT VOL. 10 PAGE 442  |
| O.R. VOL. 206 PAGE 3047 | PLAT VOL. 12 PAGE 281  |
| O.R. VOL. 23 PAGE 472   | PLAT VOL. 12 PAGE 633  |
| O.R. VOL. 247 PAGE 1933 | PLAT VOL. 17 PAGE 576  |
| O.R. VOL. 262 PAGE 6589 | PLAT VOL. 18 PAGE 263  |
| O.R. VOL. 212 PAGE 3124 | PLAT VOL. 18 PAGE 434  |
| O.R. VOL. 214 PAGE 3122 | PLAT VOL. 19 PAGE 421  |
| O.R. VOL. 182 PAGE 1529 | PLAT VOL. 19 PAGE 1386 |
| O.R. VOL. 185 PAGE 2848 | PLAT VOL. 19 PAGE 2382 |
| O.R. VOL. 240 PAGE 1464 | PLAT VOL. 19 PAGE 3382 |
| O.R. VOL. 264 PAGE 7465 | PLAT VOL. 19 PAGE 3550 |
|                         | PLAT VOL. 19 PAGE 4166 |
|                         | PLAT VOL. 19 PAGE 4400 |

BASIS OF BEARINGS FROM OHIO STATE PLANE  
 COORDINATE SYSTEM, NORTH ZONE, N.A.D. 83



SCALE: 1"=200'

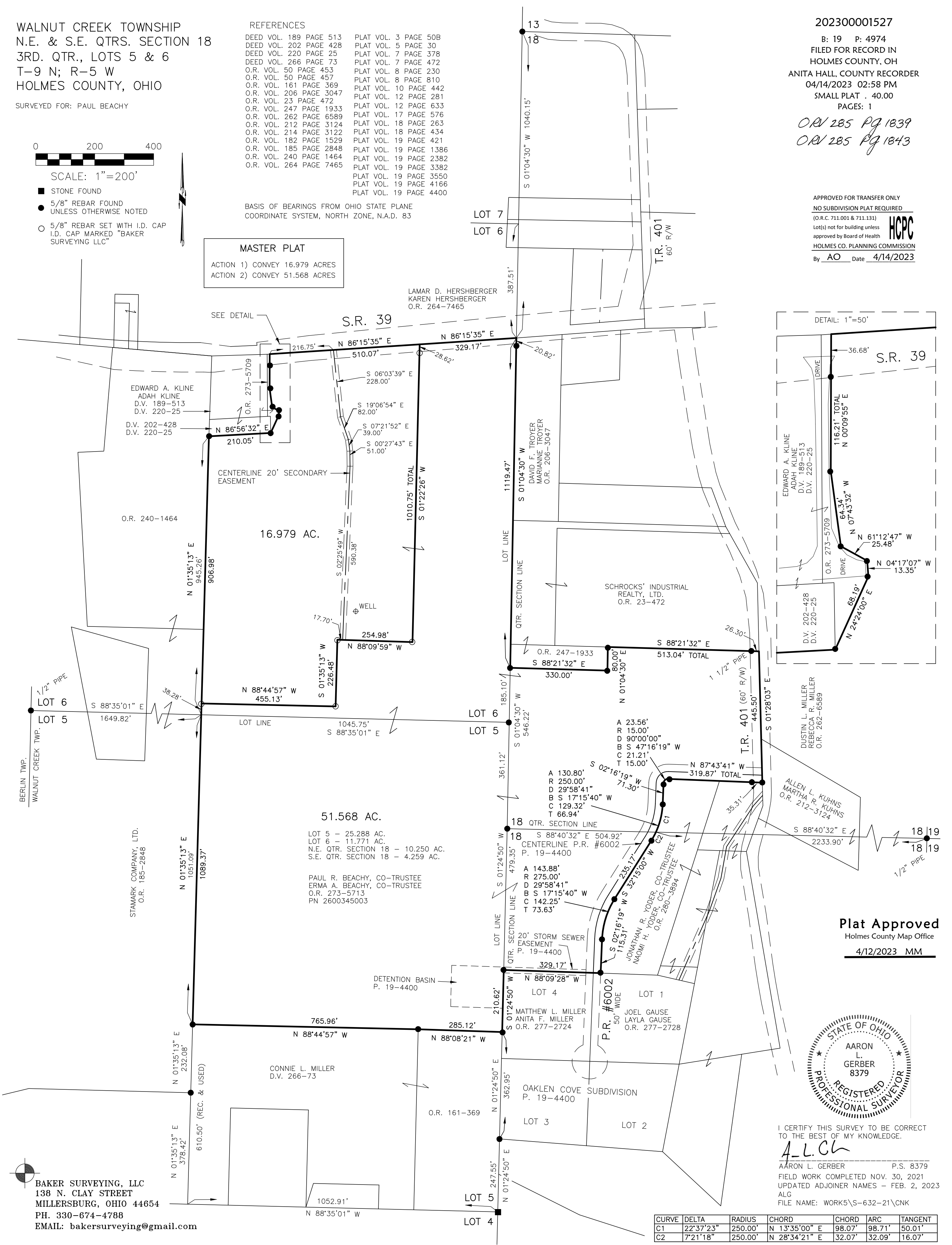
- STONE FOUND
- 5/8" REBAR FOUND UNLESS OTHERWISE NOTED
- 5/8" REBAR SET WITH I.D. CAP I.D. CAP MARKED "BAKER SURVEYING LLC"

**MASTER PLAT**  
 ACTION 1) CONVEY 16.979 ACRES  
 ACTION 2) CONVEY 51.568 ACRES

LAMAR D. HERSHBERGER  
 KAREN HERSHBERGER  
 O.R. 264-7465

20230001527  
 B: 19 P: 4974  
 FILED FOR RECORD IN  
 HOLMES COUNTY, OH  
 ANITA HALL, COUNTY RECORDER  
 04/14/2023 02:58 PM  
 SMALL PLAT . 40.00  
 PAGES: 1  
*ORV 285 Pg 1839*  
*ORV 285 Pg 1843*

APPROVED FOR TRANSFER ONLY  
 NO SUBDIVISION PLAT REQUIRED  
 (O.R.C. 711.001 & 711.131)  
 Lot(s) not for building unless  
 approved by Board of Health  
**HCPC**  
 HOLMES CO. PLANNING COMMISSION  
 By AO Date 4/14/2023



**Plat Approved**  
 Holmes County Map Office  
 4/12/2023 MM



I CERTIFY THIS SURVEY TO BE CORRECT  
 TO THE BEST OF MY KNOWLEDGE.  
*A.L.G.*  
 AARON L. GERBER P.S. 8379  
 FIELD WORK COMPLETED NOV. 30, 2021  
 UPDATED ADJOINER NAMES - FEB. 2, 2023  
 ALG  
 FILE NAME: WORK5\5-632-21\CNK

CURVE	DELTA	RADIUS	CHORD	CHORD ARC	TANGENT	
C1	22°37'23"	250.00'	N 13°35'00" E	98.07'	98.71'	50.01'
C2	7°21'18"	250.00'	N 28°34'21" E	32.07'	32.09'	16.07'

**BAKER SURVEYING, LLC**  
 138 N. CLAY STREET  
 MILLERSBURG, OHIO 44654  
 PH. 330-674-4788  
 EMAIL: bakersurveying@gmail.com