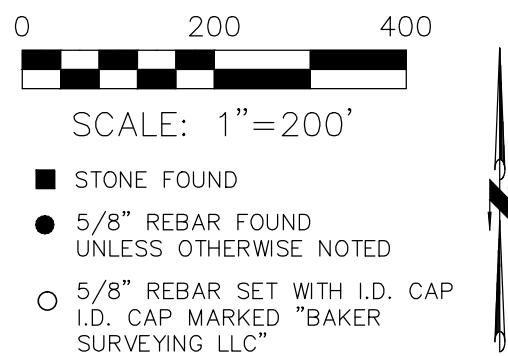


MECHANIC TOWNSHIP
 N.W. QTR. SECTION 2
 T-8 N; R-7 W
 HOLMES COUNTY, OHIO

SURVEYED FOR: RES AUCTIONS

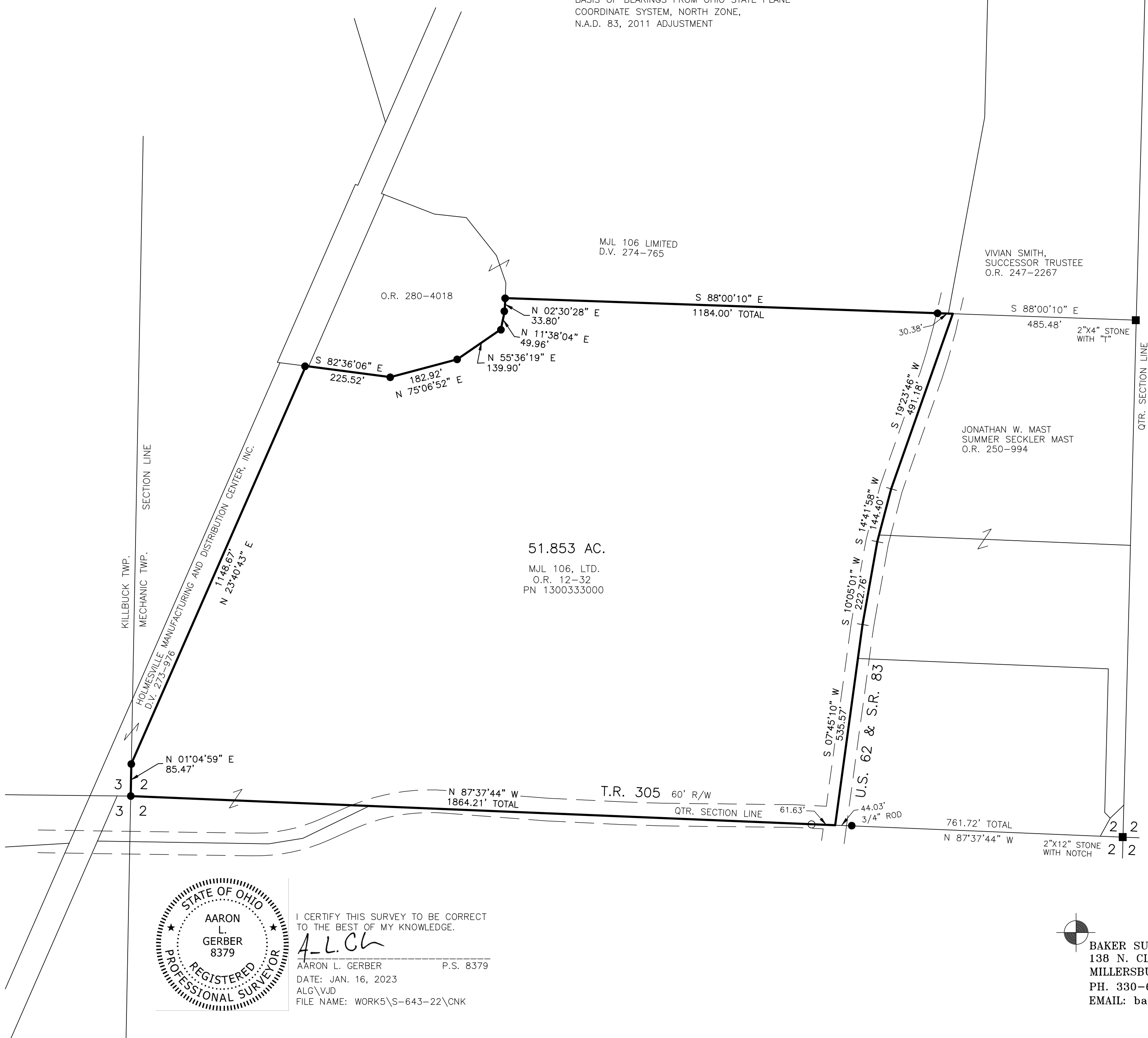


- REFERENCES
- DEED VOL. 274 PAGE 765
 - DEED VOL. 273 PAGE 976
 - O.R. VOL. 12 PAGE 32
 - O.R. VOL. 280 PAGE 4018
 - O.R. VOL. 247 PAGE 2267
 - PLAT VOL. 15 PAGE 101
 - PLAT VOL. 19 PAGE 1558
 - PLAT VOL. 2 PAGE 336
 - PLAT VOL. 2 PAGE 419

BASIS OF BEARINGS FROM OHIO STATE PLANE
 COORDINATE SYSTEM, NORTH ZONE,
 N.A.D. 83, 2011 ADJUSTMENT

202300000621
 B: 19 P: 4932
 FILED FOR RECORD IN
 HOLMES COUNTY, OH
 ANITA HALL, COUNTY RECORDER
 02/15/2023 09:22 AM
 SMALL PLAT . 40.00
 PAGES: 1

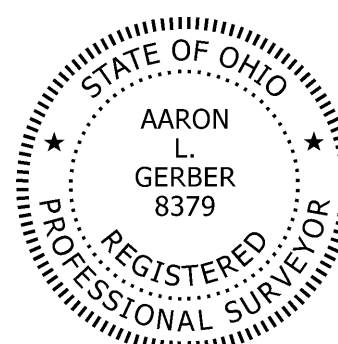
ORV 284 PG 4493



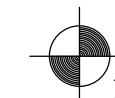
APPROVED FOR TRANSFER ONLY
 NO SUBDIVISION PLAT REQUIRED
 (O.R.C. 711.001 & 711.131)
 Lot(s) not for building unless
 approved by Board of Health
 HOLMES CO. PLANNING COMMISSION
 By TS Date 1/24/2023



Plat Approved
 Holmes County Map Office
 1/24/2023 MM



I CERTIFY THIS SURVEY TO BE CORRECT
 TO THE BEST OF MY KNOWLEDGE.
A.L.G.
 AARON L. GERBER P.S. 8379
 DATE: JAN. 16, 2023
 ALG\VDJ
 FILE NAME: WORK5\S-643-22\CNK



BAKER SURVEYING, LLC
 138 N. CLAY STREET
 MILLERSBURG, OHIO 44654
 PH. 330-674-4788
 EMAIL: bakersurveying@gmail.com