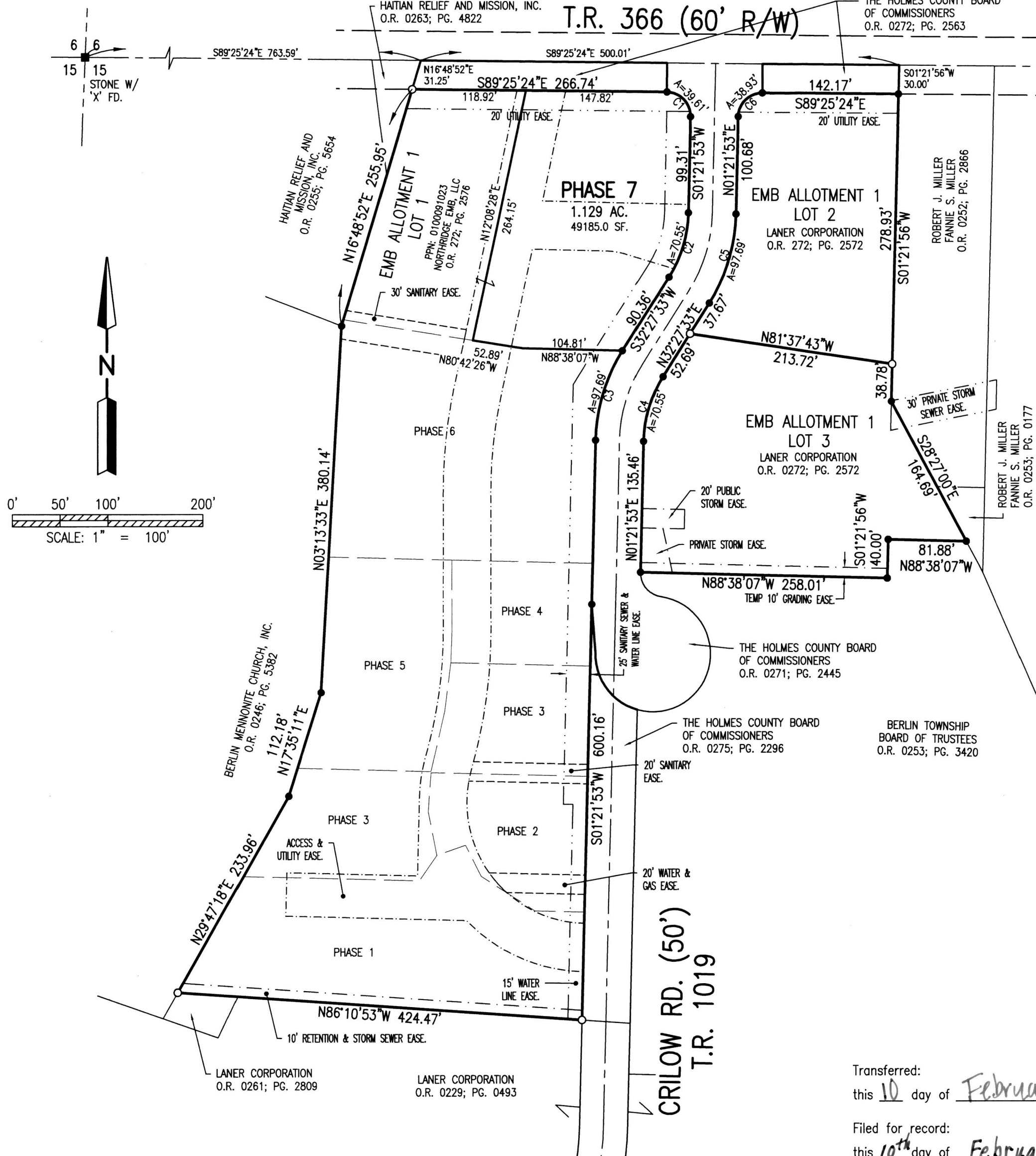


LOCATION MAP



20230000539
 B: 19 P: 4924
 FILED FOR RECORD IN
 HOLMES COUNTY, OH
 ANITA HALL, COUNTY RECORDER
 02/10/2023 10:57 AM
 SMALL PLAT . 40.00
 PAGES: 1

ORI 284 Pg 3964

- STONE FOUND
- ✕ SPIKE FOUND
- CAPPED PIN FD. MARKED "BAKER" (UNLESS NOTED)
- CAPPED PIN FD. MARKED "SJL, INC" (UNLESS NOTED)

REFERENCE SURVEY:
 O.R. VOL. 229; PG. 493
 PLAT VOL. 19; PG. 1925
 PLAT VOL. 19; PG. 2344
 PLAT VOL. 19; PG. 4076

BASIS OF BEARING:
 The bearings as shown hereon are relative to GRID NORTH of the OHIO STATE PLANE COORDINATE SYSTEM, NAD 83 DATUM

ENGINEER'S OR ARCHITECT'S DECLARATION: I declare that this plan shows graphically, insofar as possible, the layout and dimensions of units and of the buildings.



John A. Long
 John A. Long, P.E. 67239
 1/24/23
 Date

SURVEYOR'S DECLARATION: I declare that this plan was prepared from an actual survey. That the same shows graphically, insofar as possible, the location of the boundaries, the layout, location and dimensions of units and of the buildings, the location and layout of limited common areas and facilities, the location and layout of common areas and facilities, and the location of appurtenant easements, if any.



Mark E. Purdy
 Mark E. Purdy, P.S. 7307
 1-24-23
 Date

**NORTHRIDGE EMB
 CONDOMINIUMS, PHASE 7
 PART OF LOT 1
 EMB ALLOTMENT 1
 PLAT VOL. 19; PG. 4076
 BERLIN TOWNSHIP
 N.E. QTR. SEC. 15
 T-9N ; R-5W
 HOLMES COUNTY, OHIO**

NO.	ARC	RADIUS	DELTA	BEARING	CHORD
C1	39.61'	25.00'	90°47'09"	S44°01'41"E	35.60'
C2	70.55'	130.00'	31°05'40"	S16°54'43"W	69.69'
C3	97.69'	180.00'	31°05'40"	S16°54'43"W	96.49'
C4	70.55'	130.00'	31°05'40"	N16°54'43"E	69.69'
C5	97.69'	180.00'	31°05'40"	N16°54'43"E	96.49'
C6	38.93'	25.00'	89°12'43"	N45°58'10"E	35.11'

Transferred:
 this 10 day of February, 2023

Filed for record:
 this 10th day of February, 2023
 # _____ in Volume _____, Page _____

Jackie McKeague
 Jackie McKeague
 Holmes County Auditor's Office

Anita Hall
 Anita Hall
 Holmes County Recorder's Office

SHAFFER, JOHNSTON, LICHTENWALTER & ASSOCIATES, INC.
 Consulting Engineers & Surveyors
 3477 Commerce Parkway, Suite C
 Wooster, Ohio 44691
 TEL (330) 345-6377 FAX (330) 345-6725 EMAIL sjl@sjl-inc.com

DRAWN C. Falb	CHECKED	1" SCALE = 100'	DATE 01/13/2023
------------------	---------	-----------------	--------------------

DWG NO: EW-2419EA-COND07 JOB NO: EW-2419EA SHEET 1 OF 4