

MECHANIC TOWNSHIP
 N.E. & S.E. QTRS. SECTION 22
 T-8 N; R-6 W
 HOLMES COUNTY, OHIO

20220005395
 B: 19 P: 4863
 FILED FOR RECORD IN
 HOLMES COUNTY, OH
 ANITA HALL, COUNTY RECORDER
 11/21/2022 03:03 PM
 SMALL PLAT . 40.00
 PAGES: 1

SURVEYED FOR: LINDA CLOSE



SCALE: 1"=200'

- MAG NAIL FOUND
- ▲ R.R. SPIKE FOUND
- 5/8" REBAR FOUND UNLESS OTHERWISE NOTED
- 5/8" REBAR SET WITH I.D. CAP I.D. CAP MARKED "BAKER 6938"

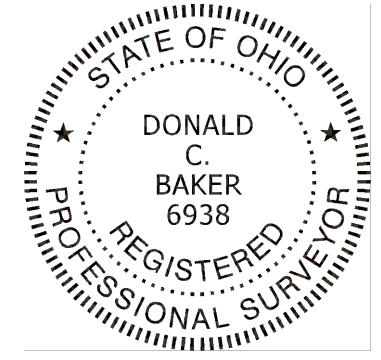
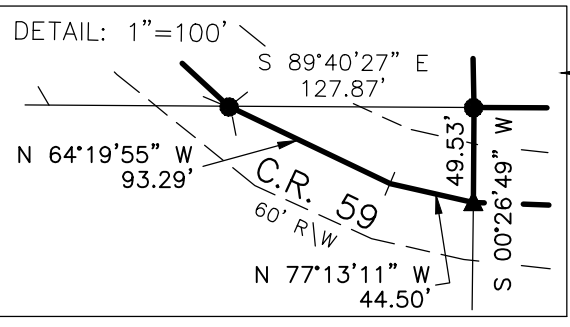
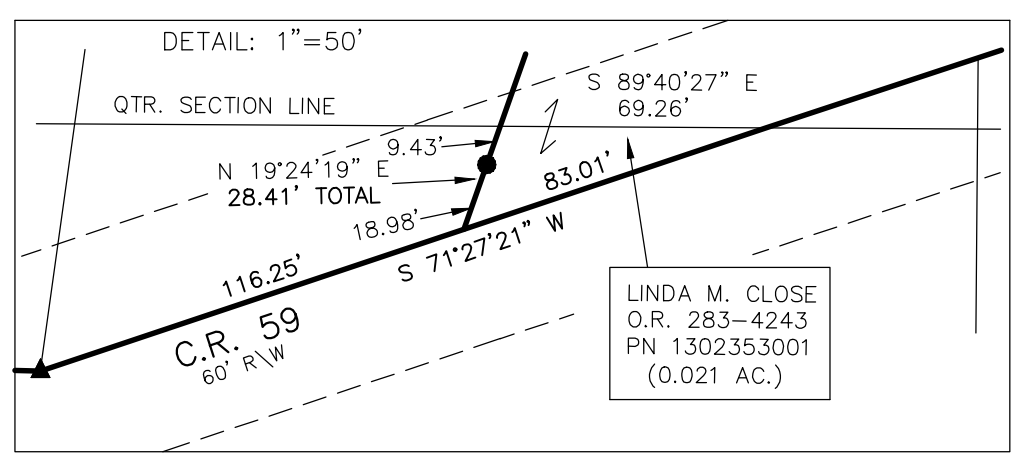
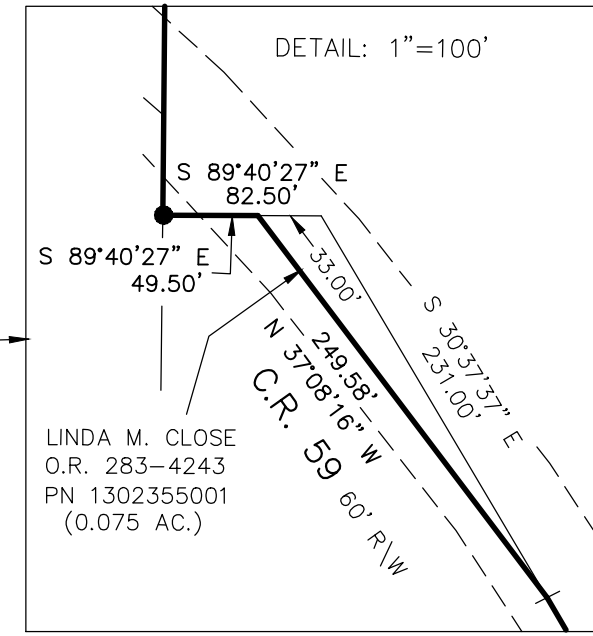
REFERENCES

- DEED VOL. 53 PAGE 355
- O.R. VOL. 255 PAGE 283
- O.R. VOL. 283 PAGE 4243
- O.R. VOL. 283 PAGE 4250
- PLAT VOL. 12 PAGE 891
- PLAT VOL. 14 PAGE 790
- PLAT VOL. 10 PAGE 679
- PLAT VOL. 17 PAGE 659
- PLAT VOL. 19 PAGE 2951
- PLAT VOL. 19 PAGE 4848

BASIS OF BEARINGS FROM
 OHIO STATE PLANE COORDINATE
 SYSTEM, NORTH ZONE, N.A.D. 83
 (2011 ADJUSTMENT)

MASTER PLAT

- ACTION 1) CONVEY 21.001 ACRES
- ACTION 2) CONVEY 114.258 ACRES
- ACTION 3) CONVEY 114.437 ACRES



I CERTIFY THIS SURVEY TO BE CORRECT TO THE BEST OF MY KNOWLEDGE.

Donald C. Baker
 DONALD C. BAKER P.S. 6938
 DATE: NOV. 7, 2022
 FDB\TAB
 FILE NAME: WORK6\S-208A-22

APPROVED FOR TRANSFER ONLY
 NO SUBDIVISION PLAT REQUIRED
 (O.R.C. 711.001 & 711.131)
 Lot(s) not for building unless approved by Board of Health
 HOLMES CO. PLANNING COMMISSION
 By AO Date 11/17/2022



BAKER SURVEYING, LLC
 138 N. CLAY STREET
 MILLERSBURG, OHIO 44654
 PH. 330-674-4788
 EMAIL: bakersurveying@gmail.com

Plat Approved
 Holmes County Map Office
 11/16/2022 MM