

SCALE: 1"=200'

- STONE FOUND
- ▲ R.R. SPIKE FOUND
- 5/8" REBAR FOUND UNLESS OTHERWISE NOTED
- 5/8" REBAR SET WITH I.D. CAP I.D. CAP MARKED "BAKER 6938"

MECHANIC TOWNSHIP
S.W. QTR. SECTION 11
S.E. QTR. SECTION 12
T-8 N; R-6 W
HOLMES COUNTY, OHIO

SURVEYED FOR: MARVIN YODER

MASTER PLAT

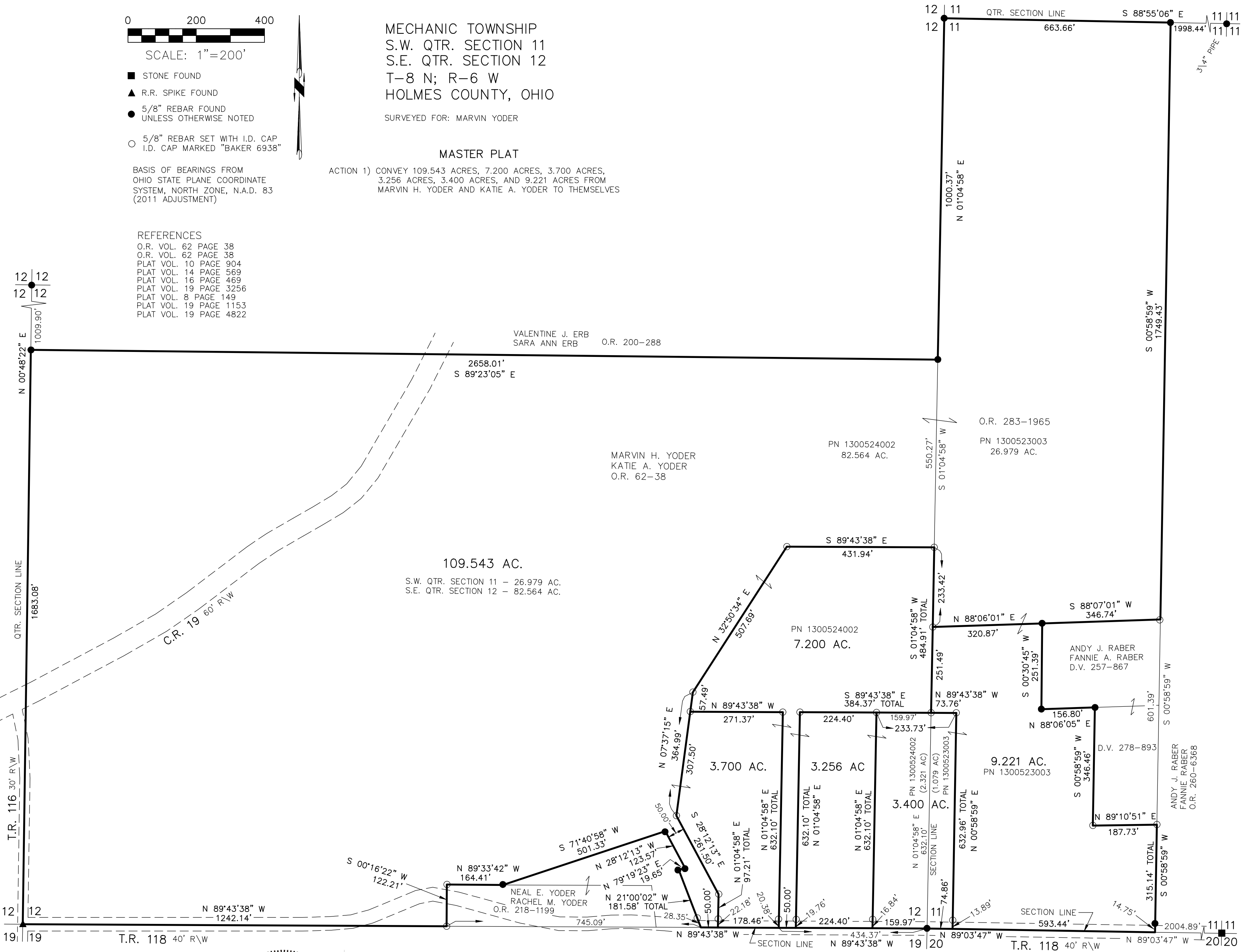
ACTION 1) CONVEY 109.543 ACRES, 7.200 ACRES, 3.700 ACRES, 3.256 ACRES, 3.400 ACRES, AND 9.221 ACRES FROM MARVIN H. YODER AND KATIE A. YODER TO THEMSELVES

BASIS OF BEARINGS FROM OHIO STATE PLANE COORDINATE SYSTEM, NORTH ZONE, N.A.D. 83 (2011 ADJUSTMENT)

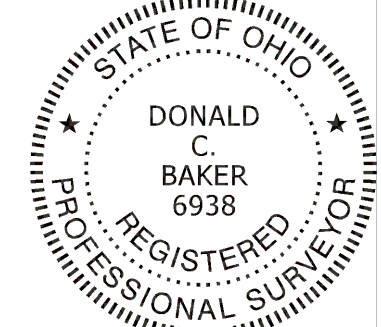
REFERENCES

- O.R. VOL. 62 PAGE 38
- O.R. VOL. 62 PAGE 38
- PLAT VOL. 10 PAGE 904
- PLAT VOL. 14 PAGE 569
- PLAT VOL. 16 PAGE 469
- PLAT VOL. 19 PAGE 3256
- PLAT VOL. 8 PAGE 149
- PLAT VOL. 19 PAGE 1153
- PLAT VOL. 19 PAGE 4822

202200005255
B: 19 P: 4858
FILED FOR RECORD IN
HOLMES COUNTY, OH
ANITA HALL, COUNTY RECORDER
11/10/2022 02:07 PM
SMALL PLAT . 40.00
PAGES: 1
ORV 283 PG 5001



I CERTIFY THIS SURVEY TO BE CORRECT TO THE BEST OF MY KNOWLEDGE.
Donald C. Baker
DONALD C. BAKER P.S. 6938
DATE: OCT. 10, 2022
FDB\KES
FILE NAME: WORK6\5-468-22



BAKER SURVEYING, LLC
138 N. CLAY STREET
MILLERSBURG, OHIO 44654
PH. 330-674-4788
EMAIL: bakersurveying@gmail.com

APPROVED FOR TRANSFER ONLY
NO SUBDIVISION PLAT REQUIRED
(O.R.C. 711.001 & 711.131)
Lot(s) not for building unless approved by Board of Health
HOLMES CO. PLANNING COMMISSION
By AO Date 11/8/2022



Plat Approved
Holmes County Map Office
10/24/2022 MM