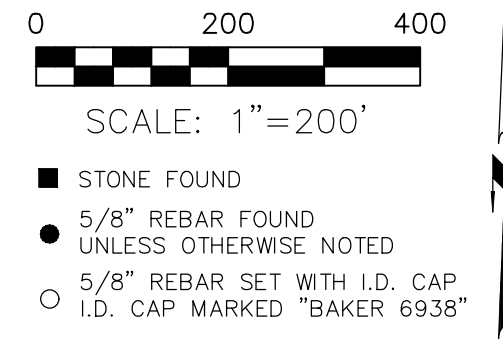


CLARK TOWNSHIP
 N.E. QTR. SECTION 6
 N.W. QTR. SECTION 7
 T-8 N; R-5 W
 HOLMES COUNTY, OHIO

SURVEYED FOR: NOAH YODER



202200005157
 B: 19 P: 4852
 FILED FOR RECORD IN
 HOLMES COUNTY, OH
 ANITA HALL, COUNTY RECORDER
 11/04/2022 01:52 PM
 PLAT MED . 43.20
 PAGES: 1

CRV 283 PG 4535

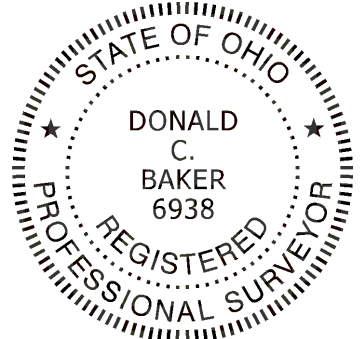
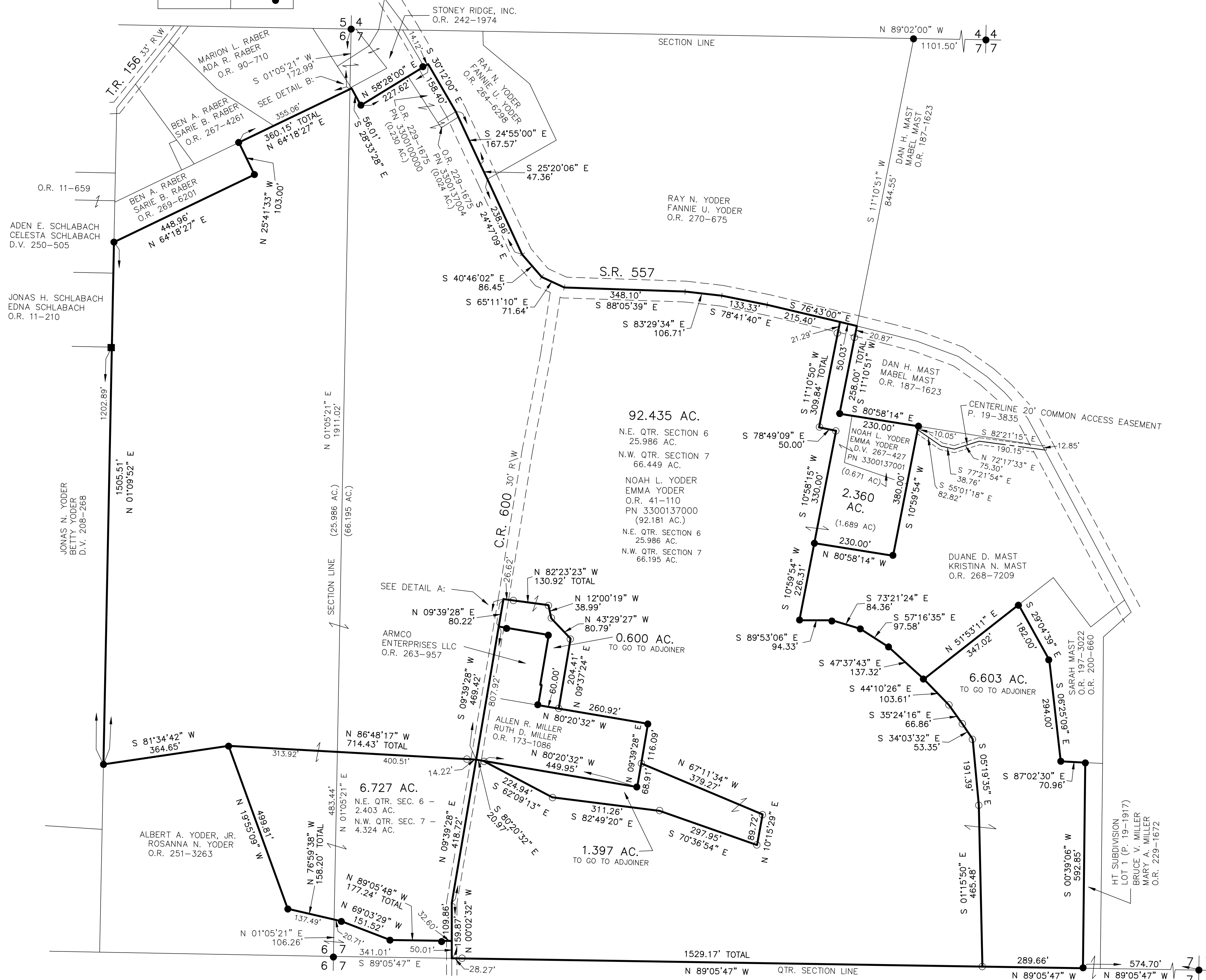
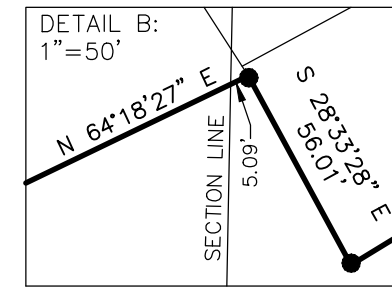
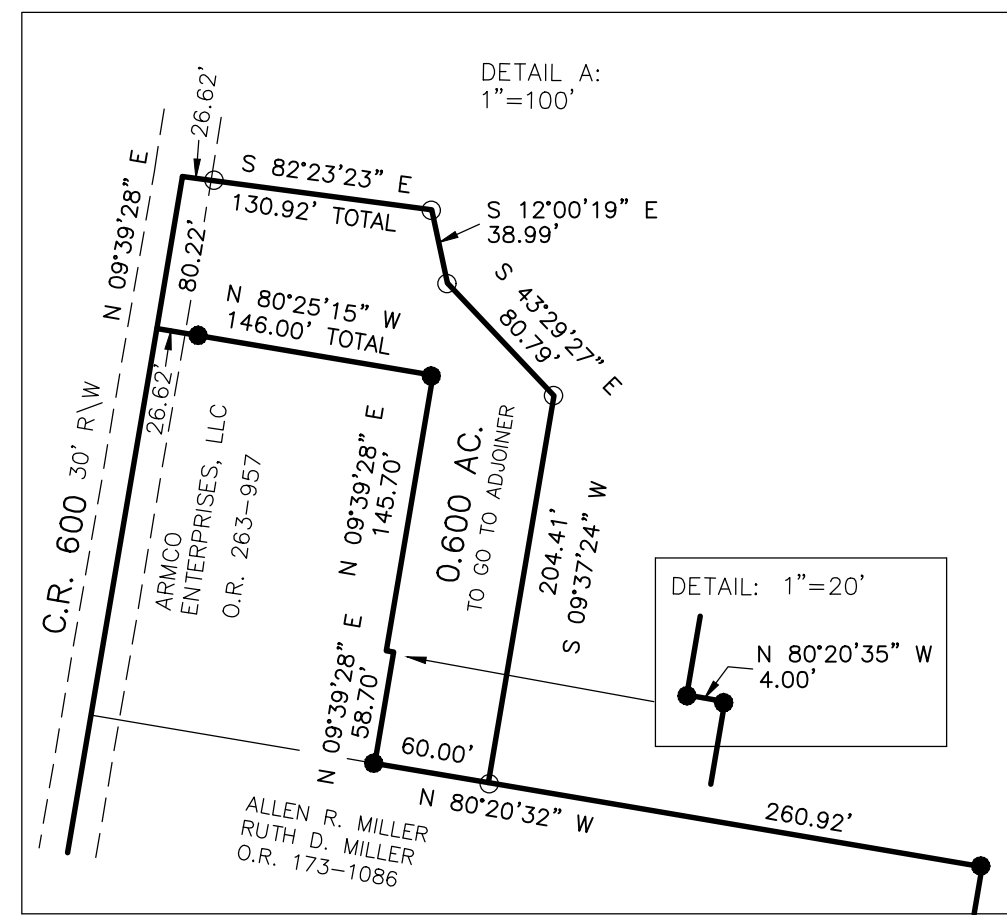
REFERENCES

- O.R. VOL. 269 PAGE 6201
- O.R. VOL. 264 PAGE 6298
- O.R. VOL. 11 PAGE 659
- O.R. VOL. 41 PAGE 110
- O.R. VOL. 229 PAGE 1675
- O.R. VOL. 251 PAGE 3263
- O.R. VOL. 173 PAGE 1086
- PLAT VOL. 17 PAGE 259
- PLAT VOL. 17 PAGE 287
- PLAT VOL. 19 PAGE 2647

BASIS OF BEARINGS FROM
 OHIO STATE PLANE COORDINATE
 SYSTEM, NORTH ZONE, N.A.D. 83
 (2011 ADJUSTMENT)

MASTER PLAT

ACTION 1) CONVEY 0.600 AC., 1.397 AC., 6.603 AC., 2.360 AC., 6.727 AC., AND 92.435 AC. FROM NOAH L. YODER AND EMMA YODER TO THEMSELVES



I CERTIFY THIS SURVEY TO BE CORRECT TO THE BEST OF MY KNOWLEDGE.

Donald C. Baker
 DONALD C. BAKER P.S. 6938
 DATE: SEPT. 16, 2022
 FDB/KES
 FILE NAME: WORK6(S-482-22)CNK

APPROVED FOR TRANSFER ONLY
 NO SUBDIVISION PLAT REQUIRED
 (O.R.C. 711.001 & 711.131)
 Lot(s) not for building unless
 approved by Board of Health
 HOLMES CO. PLANNING COMMISSION
 By: AO Date: 10/17/2022

Plat Approved
 Holmes County Map Office
 10/17/2022 MM

BAKER SURVEYING, LLC
 138 N. CLAY STREET
 MILLERSBURG, OHIO 44654
 PH. 330-674-4788
 EMAIL: bakersurveying@gmail.com