



SCALE: 1"=200'

- ▲ R.R. SPIKE FOUND
- 5/8" REBAR FOUND  
UNLESS OTHERWISE NOTED
- 5/8" REBAR SET WITH I.D. CAP  
I.D. CAP MARKED "BAKER 6938"

BASIS OF BEARINGS FROM  
OHIO STATE PLANE COORDINATE  
SYSTEM, NORTH ZONE, N.A.D. 83  
(2011 ADJUSTMENT)



I CERTIFY THIS SURVEY TO BE CORRECT  
TO THE BEST OF MY KNOWLEDGE.

*Donald C. Baker*  
DONALD C. BAKER P.S. 6938  
DATE: AUG. 1, 2022  
FDB\KES  
FILE NAME: WORK6\S-396-22



BAKER SURVEYING, LLC  
138 N. CLAY STREET  
MILLERSBURG, OHIO 44654  
PH. 330-674-4788  
EMAIL: bakersurveying@gmail.com

REFERENCES

- O.R. VOL. 249 PAGE 2830
- PLAT VOL. 19 PAGE 1055
- PLAT VOL. 19 PAGE 1578
- PLAT VOL. 19 PAGE 830
- PLAT VOL. 10 PAGE 370
- PLAT VOL. 2 PAGE 604

BERLIN TOWNSHIP  
4TH. QTR., LOT 8  
T-9 N; R-6 W  
HOLMES COUNTY, OHIO

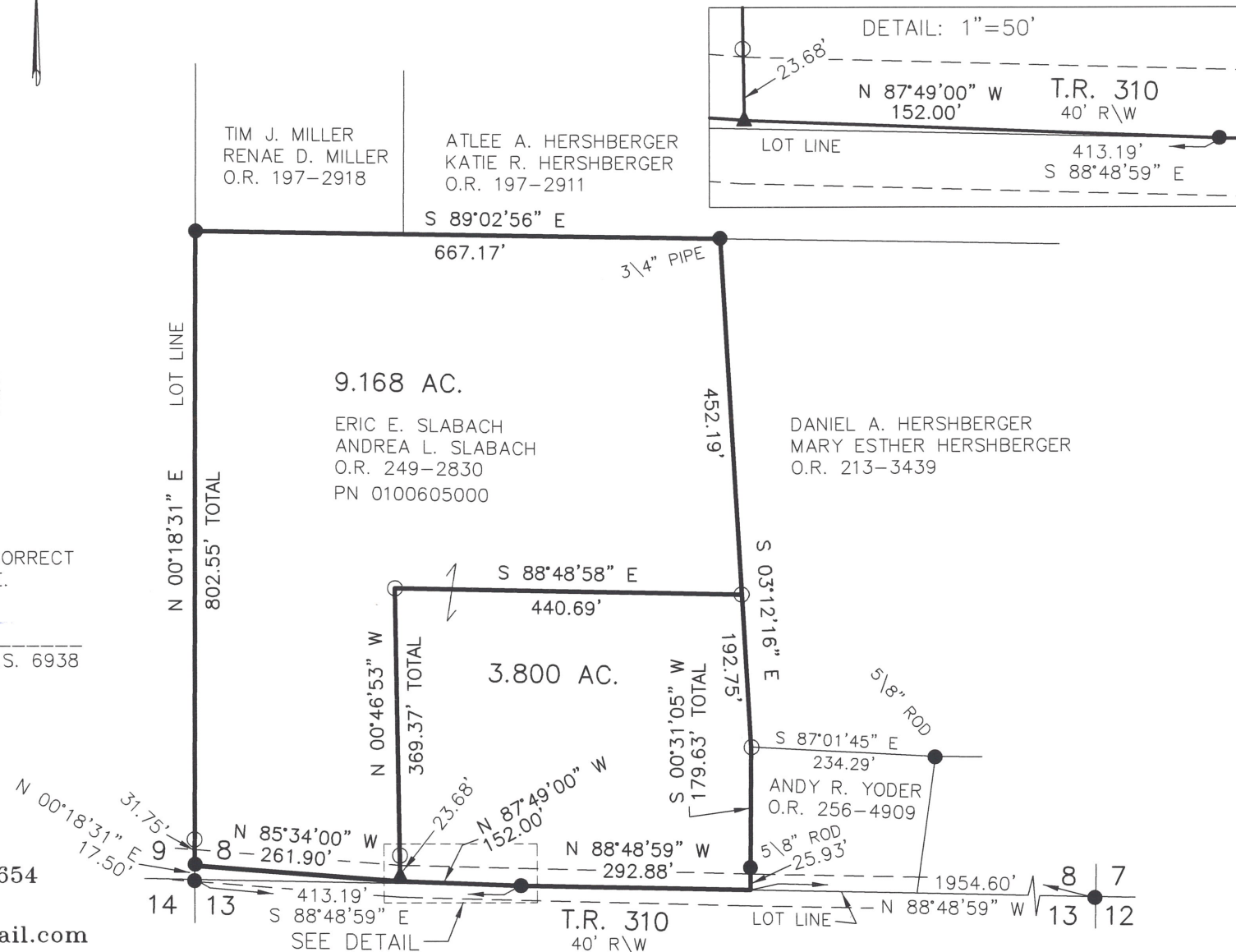
SURVEYED FOR: KAUFMAN REALTY

MASTER PLAT

ACTION 1) CONVEY 3.800 ACRES AND  
9.168 ACRES

202200004651  
B: 19 P: 4824  
FILED FOR RECORD IN  
HOLMES COUNTY, OH  
ANITA HALL, COUNTY RECORDER  
10/03/2022 03:18 PM  
SMALL PLAT . 40.00  
PAGES: 1

ORV 283 PG 2030



APPROVED FOR TRANSFER ONLY  
NO SUBDIVISION PLAT REQUIRED  
(O.R.C. 711.001 & 711.131)  
Lot(s) not for building unless  
approved by Board of Health  
HOLMES CO. PLANNING COMMISSION  
By AO Date 9/27/2022



**Plat Approved**  
Holmes County Map Office  
8/19/2022 MM