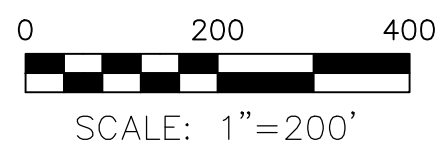


PRAIRIE TOWNSHIP
 N.W. QTR. SECTION 35
 T-14 N; R-13 W
 HOLMES COUNTY, OHIO

SURVEYED FOR: PETE HILTY



- ▲ R.R. SPIKE FOUND
- 5/8" REBAR FOUND
UNLESS OTHERWISE NOTED
- 5/8" REBAR SET WITH I.D. CAP
I.D. CAP MARKED "BAKER 6938"

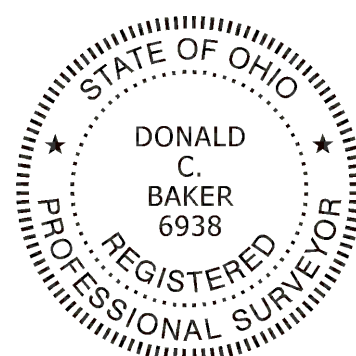
BASIS OF BEARINGS FROM
 OHIO STATE PLANE COORDINATE
 SYSTEM, NORTH ZONE, N.A.D. 83
 (2011 ADJUSTMENT)

REFERENCES

- O.R. VOL. 55 PAGE 646
- PLAT VOL. 8 PAGE 8
- PLAT VOL. 19 PAGE 2505
- PLAT VOL. 19 PAGE 3277
- PLAT VOL. 19 PAGE 3952
- PLAT VOL. 19 PAGE 3011
- PLAT VOL. 19 PAGE 2323

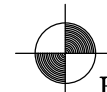
MASTER PLAT

- ACTION 1) CONVEY 1.998 ACRES
- ACTION 2) CONVEY 62.891 ACRES

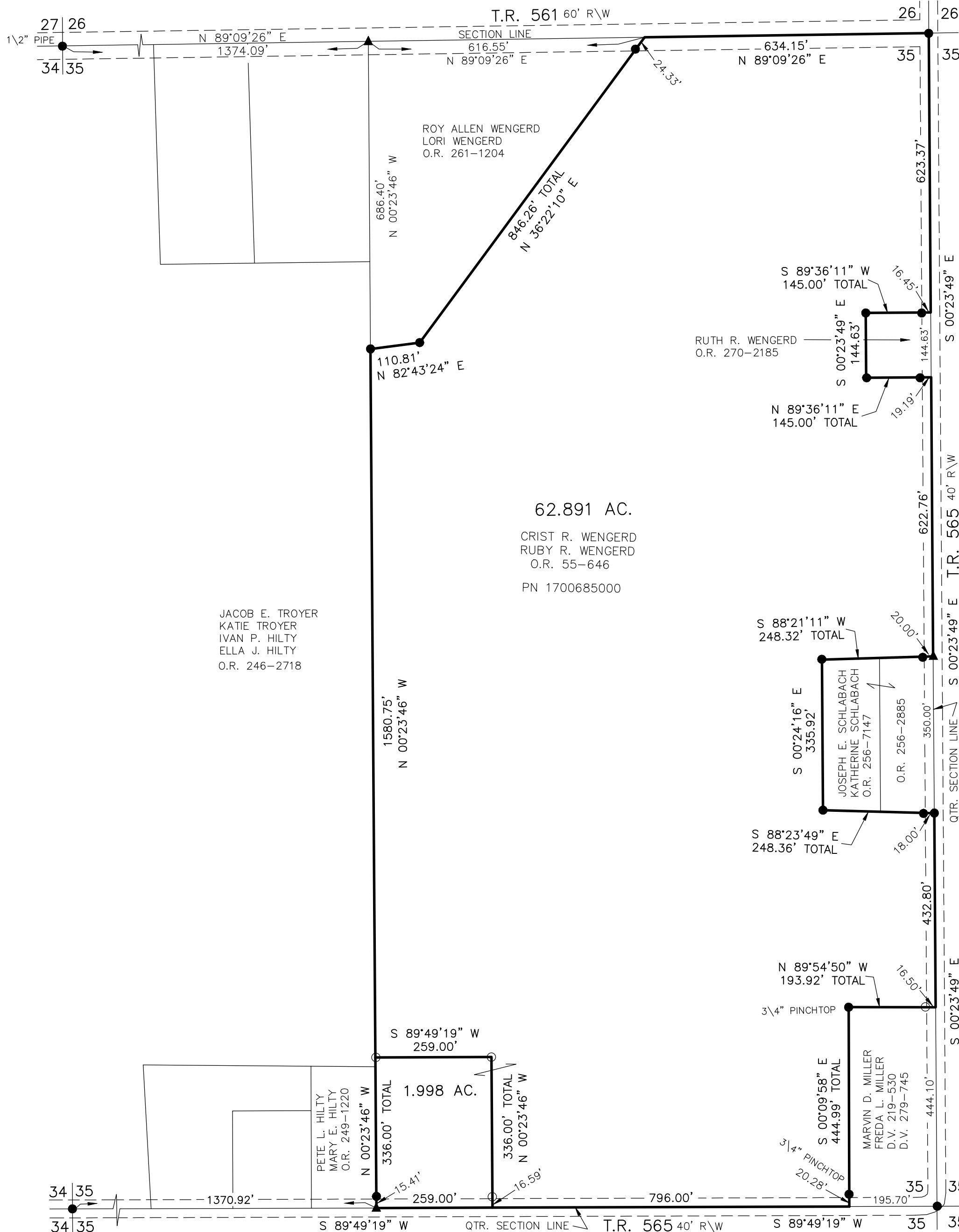


I CERTIFY THIS SURVEY TO BE CORRECT
 TO THE BEST OF MY KNOWLEDGE.

Donald C. Baker
 DONALD C. BAKER P.S. 6938
 DATE: JULY 7, 2022
 KES
 FILE NAME: WORK6\S-335-22



BAKER SURVEYING, LLC
 138 N. CLAY STREET
 MILLERSBURG, OHIO 44654
 PH. 330-674-4788
 EMAIL: bakersurveying@gmail.com



APPROVED FOR TRANSFER ONLY
 NO SUBDIVISION PLAT REQUIRED
 (O.R.C. 711.001 & 711.131)
 Lot(s) not for building unless
 approved by Board of Health
 HOLMES CO. PLANNING COMMISSION
 By AO Date 9/16/2022



Plat Approved
 Holmes County Map Office
 9/16/2022 MM