

WALNUT CREEK TOWNSHIP
 N.W. QTR. SECTION 20
 T-9 N; R-5 W
 HOLMES COUNTY, OHIO

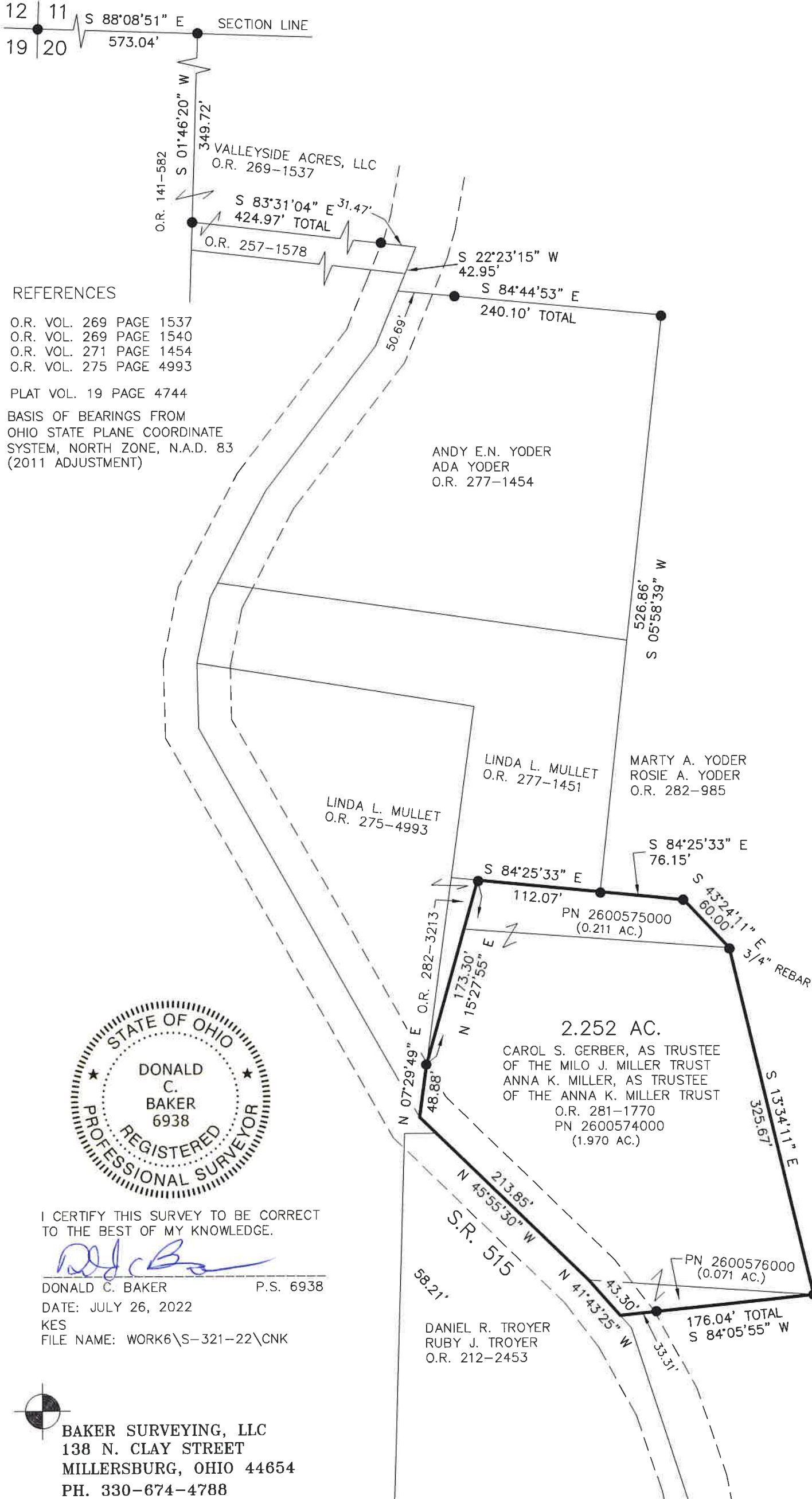
SURVEYED FOR: KAUFMAN REALTY



SCALE: 1"=100'

● 5/8" REBAR FOUND
 UNLESS OTHERWISE NOTED

202200004188
 B: 19 P: 4789
 FILED FOR RECORD IN
 HOLMES COUNTY, OH
 ANITA HALL, COUNTY RECORDER
 09/07/2022 10:59 AM
 SMALL PLAT . 40.00
 PAGES: 1
 ORV 282 PG 7223



REFERENCES

- O.R. VOL. 269 PAGE 1537
- O.R. VOL. 269 PAGE 1540
- O.R. VOL. 271 PAGE 1454
- O.R. VOL. 275 PAGE 4993

PLAT VOL. 19 PAGE 4744

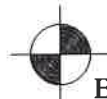
BASIS OF BEARINGS FROM
 OHIO STATE PLANE COORDINATE
 SYSTEM, NORTH ZONE, N.A.D. 83
 (2011 ADJUSTMENT)



I CERTIFY THIS SURVEY TO BE CORRECT
 TO THE BEST OF MY KNOWLEDGE.

Donald C. Baker
 DONALD C. BAKER P.S. 6938
 DATE: JULY 26, 2022
 KES
 FILE NAME: WORK6\S-321-22\CNK

APPROVED FOR TRANSFER ONLY
 NO SUBDIVISION PLAT REQUIRED
 (O.R.C. 711.001 & 711.131)
 Lot(s) not for building unless
 approved by Board of Health
 HOLMES CO. PLANNING COMMISSION
 By AO Date 8/4/2022



BAKER SURVEYING, LLC
 138 N. CLAY STREET
 MILLERSBURG, OHIO 44654
 PH. 330-674-4788
 EMAIL: bakersurveying@gmail.com

Plat Approved
 Holmes County Map Office
 8/4/2022 MM