

RICHLAND TOWNSHIP
 S.W. QTR. SECTION 15
 T-8 N; R-9 W
 HOLMES COUNTY, OHIO

SURVEYED FOR: RACHEL MYERS

0 200 400

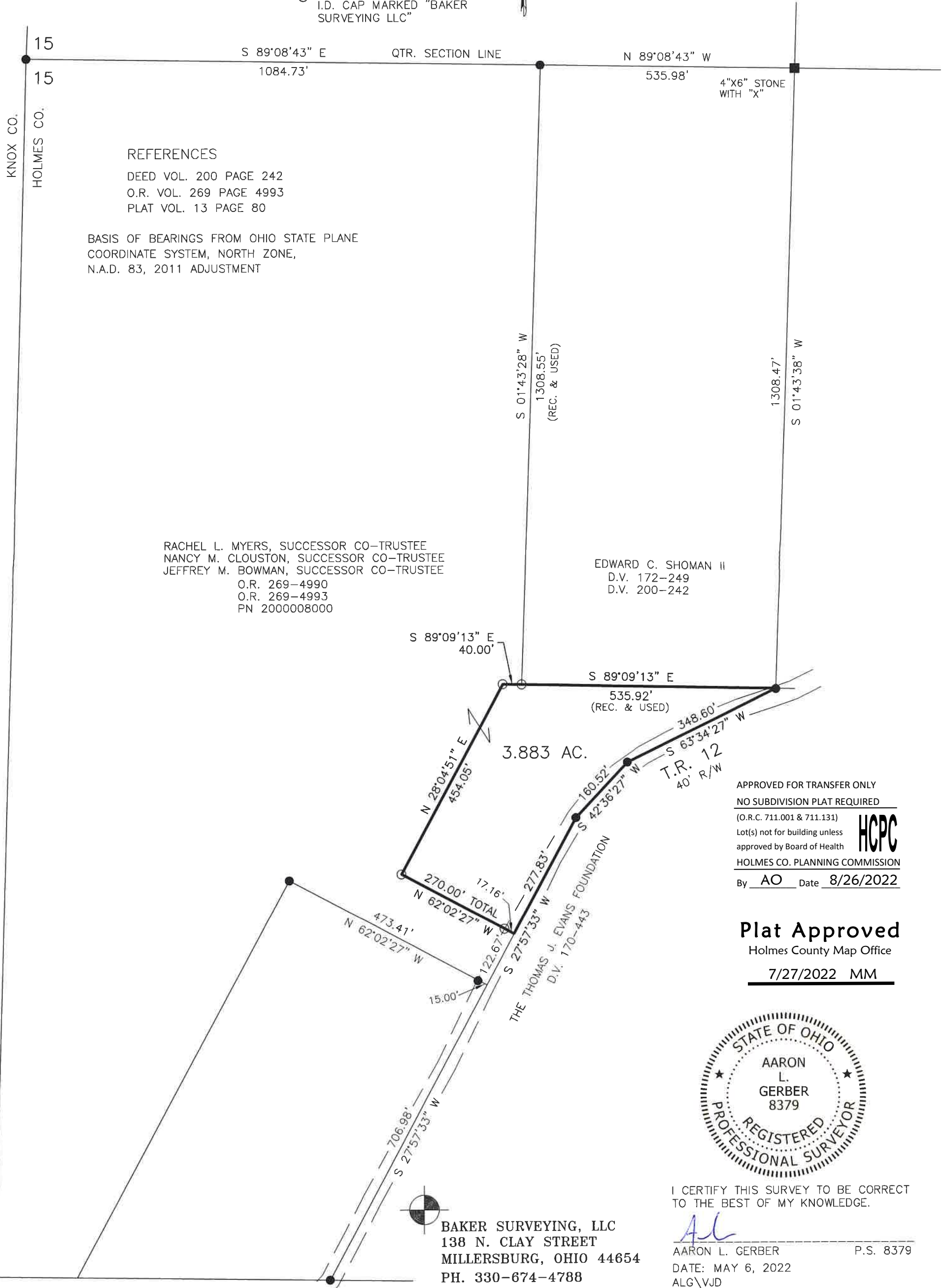


SCALE: 1"=200'

- STONE FOUND
- 5/8" REBAR FOUND UNLESS OTHERWISE NOTED
- 5/8" REBAR SET WITH I.D. CAP I.D. CAP MARKED "BAKER SURVEYING LLC"



202200004063
 B: 19 P: 4780
 FILED FOR RECORD IN
 HOLMES COUNTY, OH
 ANITA HALL, COUNTY RECORDER
 08/30/2022 02:59 PM
 SMALL PLAT . 40.00
 PAGES: 1
 ORV 282 PG 6544



REFERENCES

DEED VOL. 200 PAGE 242
 O.R. VOL. 269 PAGE 4993
 PLAT VOL. 13 PAGE 80

BASIS OF BEARINGS FROM OHIO STATE PLANE
 COORDINATE SYSTEM, NORTH ZONE,
 N.A.D. 83, 2011 ADJUSTMENT

RACHEL L. MYERS, SUCCESSOR CO-TRUSTEE
 NANCY M. CLOUSTON, SUCCESSOR CO-TRUSTEE
 JEFFREY M. BOWMAN, SUCCESSOR CO-TRUSTEE
 O.R. 269-4990
 O.R. 269-4993
 PN 2000008000

EDWARD C. SHOMAN II
 D.V. 172-249
 D.V. 200-242

APPROVED FOR TRANSFER ONLY
 NO SUBDIVISION PLAT REQUIRED
 (O.R.C. 711.001 & 711.131)
 Lot(s) not for building unless
 approved by Board of Health
 HOLMES CO. PLANNING COMMISSION
 By AO Date 8/26/2022



Plat Approved
 Holmes County Map Office
7/27/2022 MM



I CERTIFY THIS SURVEY TO BE CORRECT
 TO THE BEST OF MY KNOWLEDGE.

AL

AARON L. GERBER P.S. 8379
 DATE: MAY 6, 2022
 ALG/VJD
 FILE NAME: WORK5\S-234-22\CNK

BAKER SURVEYING, LLC
 138 N. CLAY STREET
 MILLERSBURG, OHIO 44654
 PH. 330-674-4788

EMAIL: bakersurveying@gmail.com