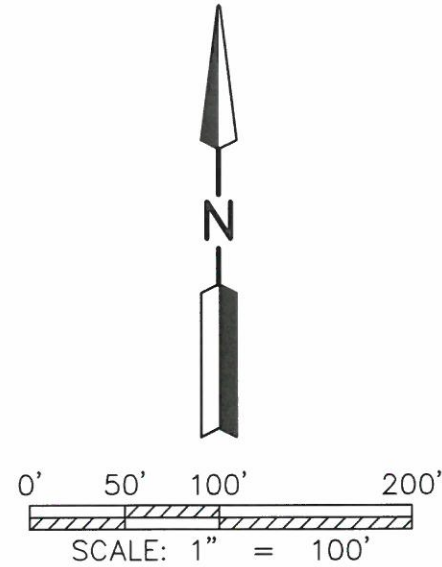


20220003982
 B: 19 P: 4777
 FILED FOR RECORD IN
 HOLMES COUNTY, OH
 ANITA HALL, COUNTY RECORDER
 08/24/2022 10:27 AM
 SMALL PLAT . 40.00
 PAGES: 1
 ORV 282 PG 6085

MAP OF SURVEY

NE QUARTER OF SECTION 6
 T-13-N; R-13-W
 PRAIRIE TOWNSHIP
 HOLMES COUNTY, OHIO



REFERENCE SURVEY:
 PLAT V-15, P-127
 PLAT V-16, P-754
 PLAT V-19, P-675
 PLAT V-19, P-2874

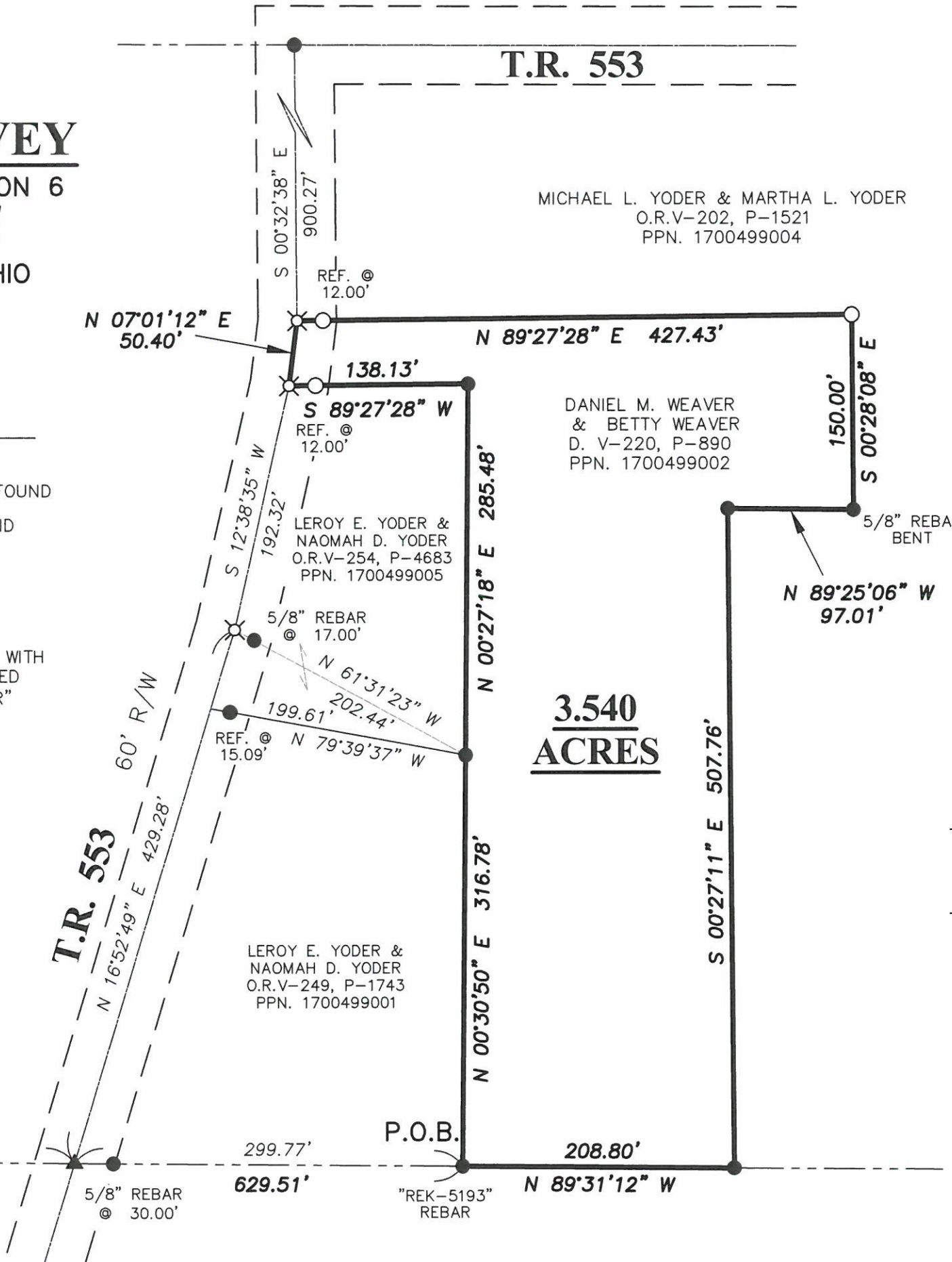
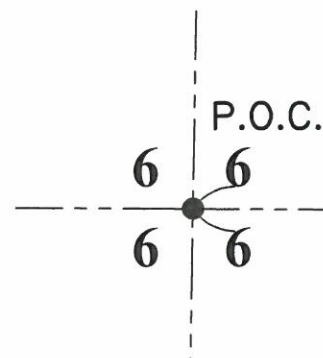
BASIS OF BEARING:
 THE BEARINGS AS SHOWN HEREON ARE RELATIVE
 TO GRID NORTH OF THE OHIO STATE PLANE
 COORDINATE SYSTEM, NAD 83 (2011) DATUM

LEGEND

- ▲ RAILROAD SPIKE FOUND
- CAPPED PIN FOUND WITH I.D. CAP MARKED "BAKER" (UNLESS NOTED)
- ⊗ 2" MAG NAIL SET
- 5/8" REBAR SET WITH I.D. CAP MARKED "LINGENFELTER" 8499

Distances shown hereon are expressed in feet and decimal parts thereof, bearings are used to express angles only, iron pins or monuments were found or set as indicated hereon. All of which I believe to be correct to the best of my knowledge.

By: Jason J. Lingenfelter 7-18-2022
 JASON J. LINGENFELTER, P.S. #8499 DATE
 JOB #22-025



APPROVED FOR TRANSFER ONLY
 NO SUBDIVISION PLAT REQUIRED
 (O.R.C. 711.001 & 711.131)
 Lot(s) not for building unless
 approved by Board of Health
 HOLMES CO. PLANNING COMMISSION
 By AO Date 8/24/2022



Plat Approved
 Holmes County Map Office
8/8/2022 MM