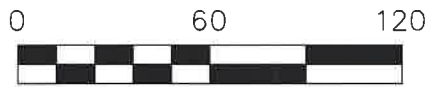


VILLAGE OF WINESBURG  
PART OF OUTLOTS 7, 8 & 9

PAINT TOWNSHIP  
3RD QTR., LOTS 37 & 38  
T-10 N; R-4 W  
HOLMES COUNTY, OHIO

SURVEYED FOR: HOLMES COUNTY ENGINEER



SCALE: 1"=60'

- 5/8" REBAR FOUND UNLESS OTHERWISE NOTED
- 5/8" REBAR SET WITH I.D. CAP I.D. CAP MARKED "BAKER SURVEYING LLC"

MASTER PLAT

ACTION 1) CONVEY 0.509 ACRES, 0.247 ACRES, AND 0.002 ACRES TO ADJOINER

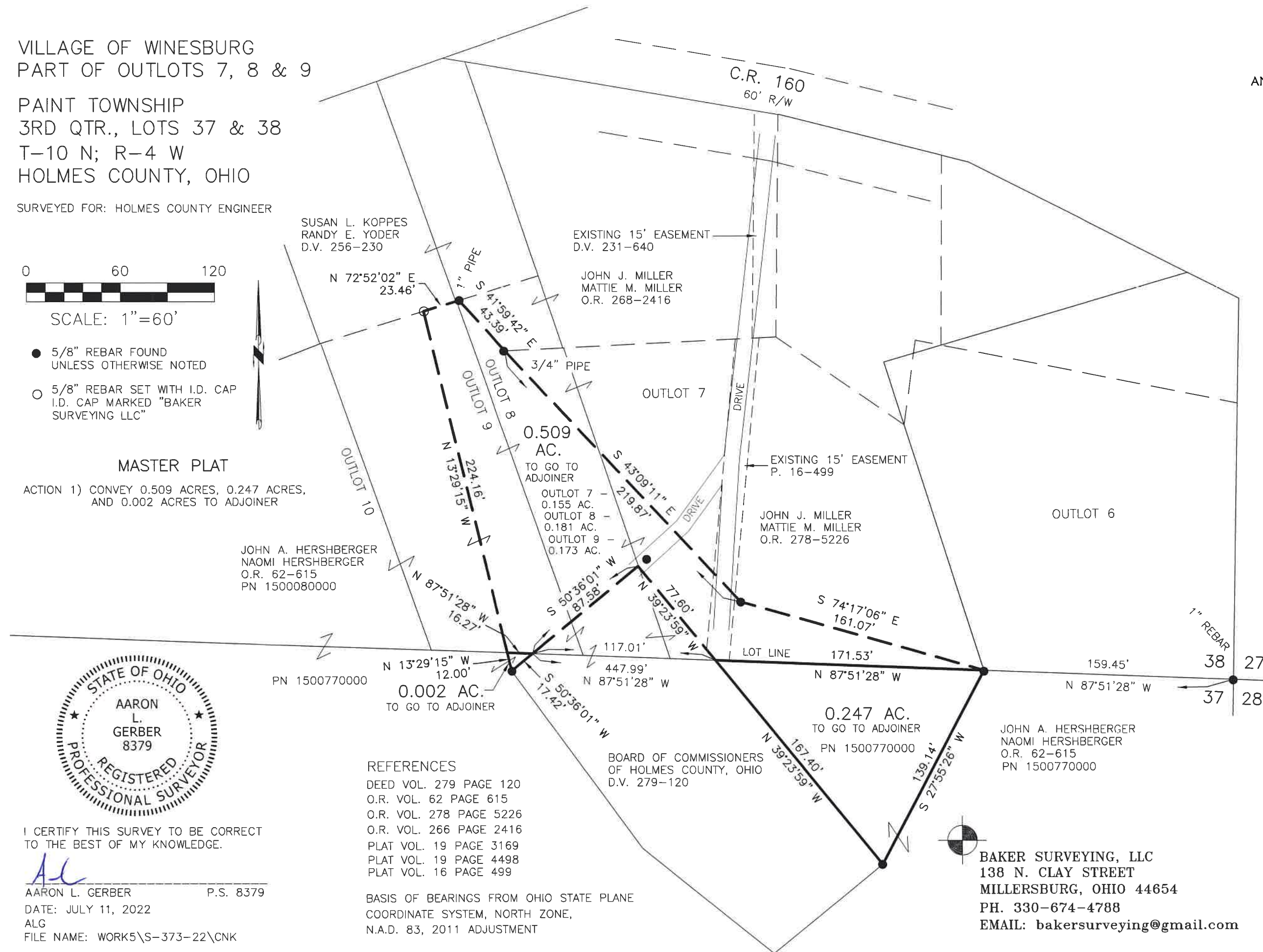
JOHN A. HERSHBERGER  
NAOMI HERSHBERGER  
O.R. 62-615  
PN 1500080000

SUSAN L. KOPPEL  
RANDY E. YODER  
D.V. 256-230

EXISTING 15' EASEMENT  
D.V. 231-640

JOHN J. MILLER  
MATTIE M. MILLER  
O.R. 268-2416

C.R. 160  
60' R/W



PN 1500770000

0.002 AC.  
TO GO TO ADJOINER

S 50°36'01" W 17.42'  
N 87°51'28" W 117.01'

BOARD OF COMMISSIONERS  
OF HOLMES COUNTY, OHIO  
D.V. 279-120

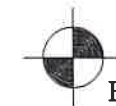
0.247 AC.  
TO GO TO ADJOINER

N 87°51'28" W 171.53'

JOHN A. HERSHBERGER  
NAOMI HERSHBERGER  
O.R. 62-615  
PN 1500770000

- REFERENCES
- DEED VOL. 279 PAGE 120
  - O.R. VOL. 62 PAGE 615
  - O.R. VOL. 278 PAGE 5226
  - O.R. VOL. 266 PAGE 2416
  - PLAT VOL. 19 PAGE 3169
  - PLAT VOL. 19 PAGE 4498
  - PLAT VOL. 16 PAGE 499

BASIS OF BEARINGS FROM OHIO STATE PLANE  
COORDINATE SYSTEM, NORTH ZONE,  
N.A.D. 83, 2011 ADJUSTMENT



BAKER SURVEYING, LLC  
138 N. CLAY STREET  
MILLERSBURG, OHIO 44654  
PH. 330-674-4788  
EMAIL: bakersurveying@gmail.com

I CERTIFY THIS SURVEY TO BE CORRECT  
TO THE BEST OF MY KNOWLEDGE.

*ALG*  
AARON L. GERBER P.S. 8379  
DATE: JULY 11, 2022  
ALG  
FILE NAME: WORK5\S-373-22\CNK



202200003794  
B: 19 P: 4765  
FILED FOR RECORD IN  
HOLMES COUNTY, OH  
ANITA HALL, COUNTY RECORDER  
08/16/2022 11:42 AM  
CNTY SM PLT . 0.00  
PAGES: 1

ORV 282 PG 5041  
ORV 282 PG 5047

APPROVED FOR TRANSFER ONLY  
NO SUBDIVISION PLAT REQUIRED  
(O.R.C. 711.001 & 711.131)  
Lot(s) not for building unless  
approved by Board of Health  
HOLMES CO. PLANNING COMMISSION  
By AO Date 8/8/2022



**Plat Approved**  
Holmes County Map Office  
8/8/2022 BH