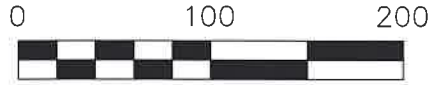


HARDY TOWNSHIP
 N.W. QTR. SECTION 4
 T-9 N; R-6 W
 HOLMES COUNTY, OHIO

SURVEYED FOR: JEFF SCHLABACH



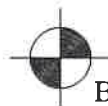
SCALE: 1"=100'

- 5/8" REBAR FOUND
UNLESS OTHERWISE NOTED
- 5/8" REBAR SET WITH I.D. CAP
I.D. CAP MARKED "BAKER 6938"

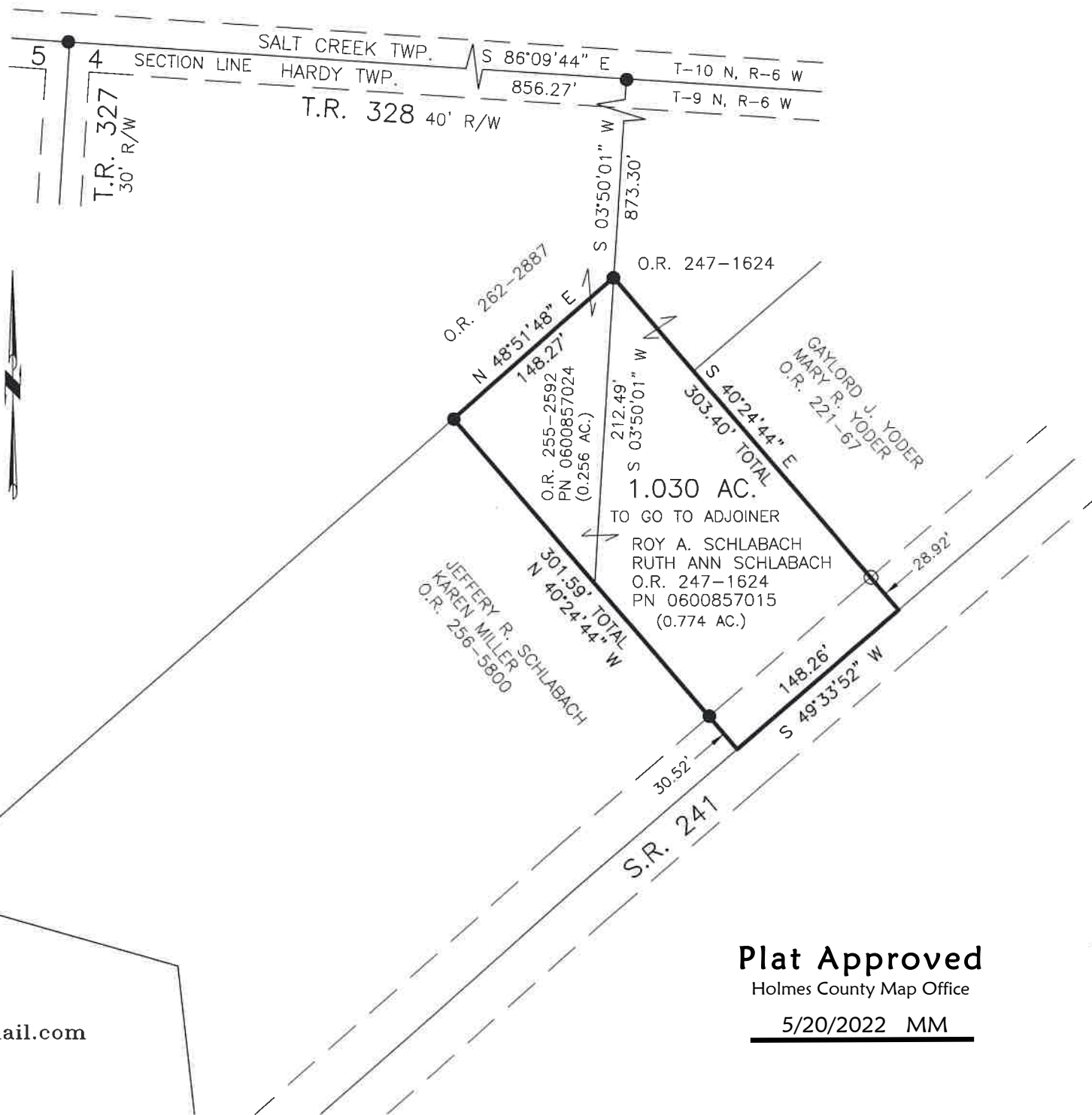
REFERENCES

- O.R. VOL. 247 PAGE 1624
- O.R. VOL. 262 PAGE 2887
- O.R. VOL. 255 PAGE 2592
- O.R. VOL. 256 PAGE 5800
- PLAT VOL. 19 PAGE 2736
- PLAT VOL. 19 PAGE 2901
- PLAT VOL. 19 PAGE 2923

BASIS OF BEARINGS FROM
 PLAT VOL. 19 PAGE 2736



BAKER SURVEYING, LLC
 138 N. CLAY STREET
 MILLERSBURG, OHIO 44654
 PH. 330-674-4788
 EMAIL: bakersurveying@gmail.com



1.030 AC.
 TO GO TO ADJOINER
 ROY A. SCHLABACH
 RUTH ANN SCHLABACH
 O.R. 247-1624
 PN 0600857015
 (0.774 AC.)

Plat Approved
 Holmes County Map Office
5/20/2022 MM

202200003762
 B: 19 P: 4761
 FILED FOR RECORD IN
 HOLMES COUNTY, OH
 ANITA HALL, COUNTY RECORDER
 08/15/2022 11:56 AM
 SMALL PLAT . 40.00
 PAGES: 1

ORV 282 PG 4923
 ORV 282 PG 4925

APPROVED FOR TRANSFER ONLY
 NO SUBDIVISION PLAT REQUIRED
 (O.R.C. 711.001 & 711.131)
 Lot(s) not for building unless
 approved by Board of Health
 HOLMES CO. PLANNING COMMISSION
 By AO Date 5/23/2022



I CERTIFY THIS SURVEY TO BE CORRECT
 TO THE BEST OF MY KNOWLEDGE.

Donald C. Baker

DONALD C. BAKER P.S. 6938
 DATE: MAY 11, 2022
 TAB\GRB
 FILE NAME: WORK5\S-255-22\CNK