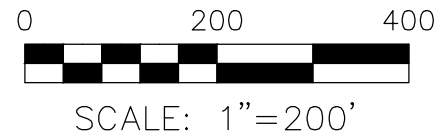


KILLBUCK TOWNSHIP
 N.E. & N.W. QTRS. SECTION 19
 S.E. QTR. SECTION 12
 T-8 N; R-8 W
 HOLMES COUNTY, OHIO

SURVEYED FOR: HOLMES SIDING CONTRACTORS, LTD.



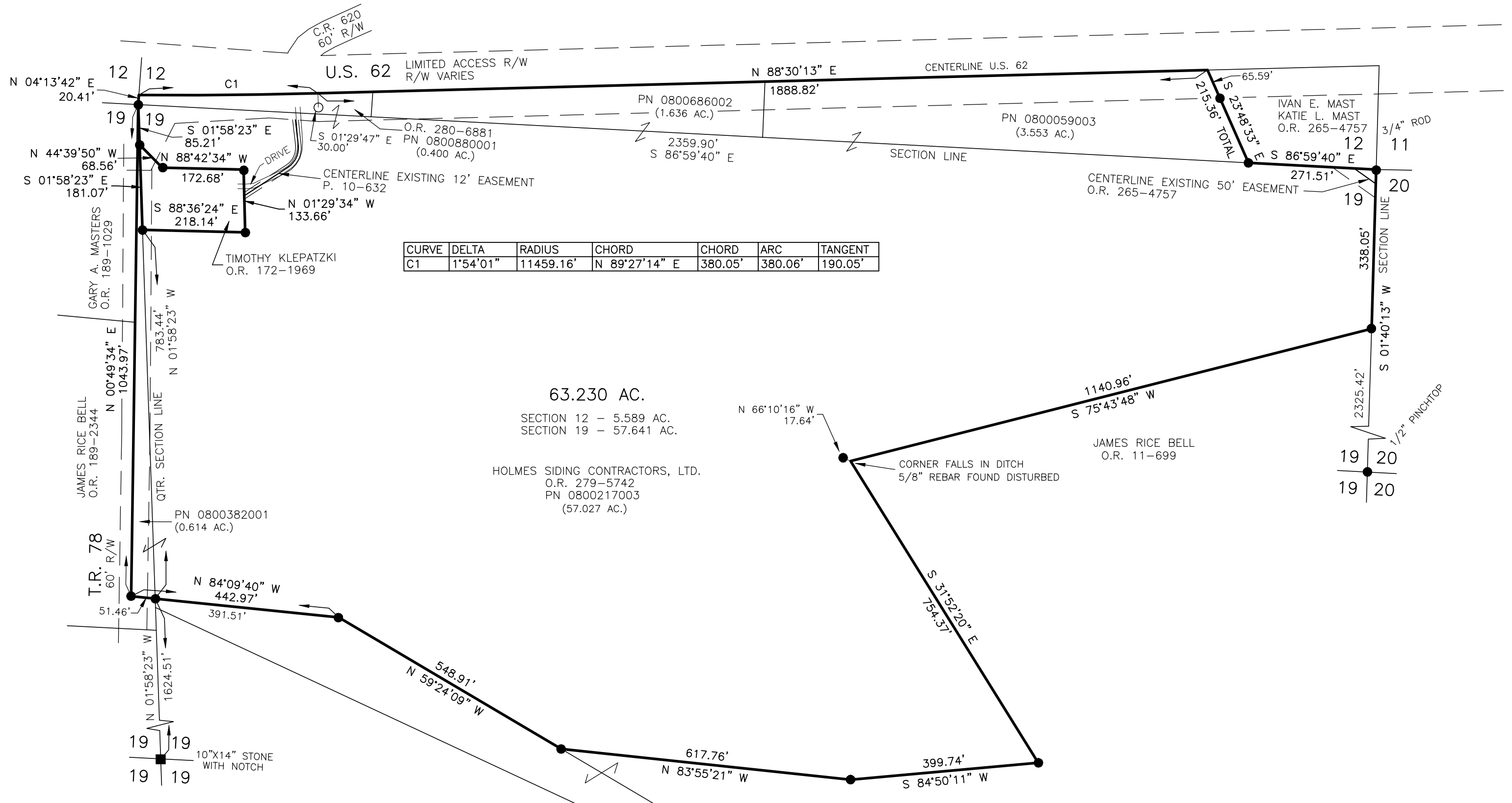
- STONE FOUND
- 5/8" REBAR FOUND UNLESS OTHERWISE NOTED
- 5/8" REBAR SET WITH I.D. CAP I.D. CAP MARKED "BAKER SURVEYING LLC"

REFERENCES

O.R. VOL. 279 PAGE 5742
 O.R. VOL. 265 PAGE 4757
 O.R. VOL. 172 PAGE 1969
 PLAT VOL. 10 PAGE 632
 PLAT VOL. 19 PAGE 3404
 PLAT VOL. 19 PAGE 720
 PLAT VOL. 19 PAGE 4580

BASIS OF BEARINGS FROM
 OHIO STATE PLANE COORDINATE
 SYSTEM, NORTH ZONE, N.A.D. 83,
 2011 ADJUSTMENT

202200003670
 B: 19 P: 4759
 FILED FOR RECORD IN
 HOLMES COUNTY, OH
 ANITA HALL, COUNTY RECORDER
 08/08/2022 10:57 AM
 PLAT MED . 43.20
 PAGES: 1
 ORV 282 PG 4396



I CERTIFY THIS SURVEY TO BE CORRECT
 TO THE BEST OF MY KNOWLEDGE.
A-L-G
 AARON L. GERBER P.S. 8379
 DATE: JUNE 17, 2022
 ALG/WAG
 FILE NAME: WORK5\S-257A22\CNK

BAKER SURVEYING, LLC
 138 N. CLAY STREET
 MILLERSBURG, OHIO 44654
 PH. 330-674-4788
 EMAIL: bakersurveying@gmail.com

APPROVED FOR TRANSFER ONLY
 NO SUBDIVISION PLAT REQUIRED
 (O.R.C. 711.001 & 711.131)
 Lot(s) not for building unless
 approved by Board of Health
 HOLMES CO. PLANNING COMMISSION
 By TS Date 8/2/2022
 (AO)

Plat Approved
 Holmes County Map Office
 7/25/2022 MM