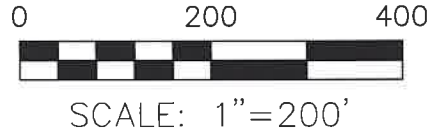


PRAIRIE TOWNSHIP  
 N.W. QTR. SECTION 15  
 T-13 N; R-13 W  
 HOLMES COUNTY, OHIO

SURVEYED FOR: ED MILLER



- ▲ R.R. SPIKE FOUND
- 5/8" REBAR FOUND  
UNLESS OTHERWISE NOTED
- 5/8" REBAR SET WITH I.D. CAP  
I.D. CAP MARKED "BAKER 6938"

202200003463

B: 19 P: 4746

FILED FOR RECORD IN  
 HOLMES COUNTY, OH

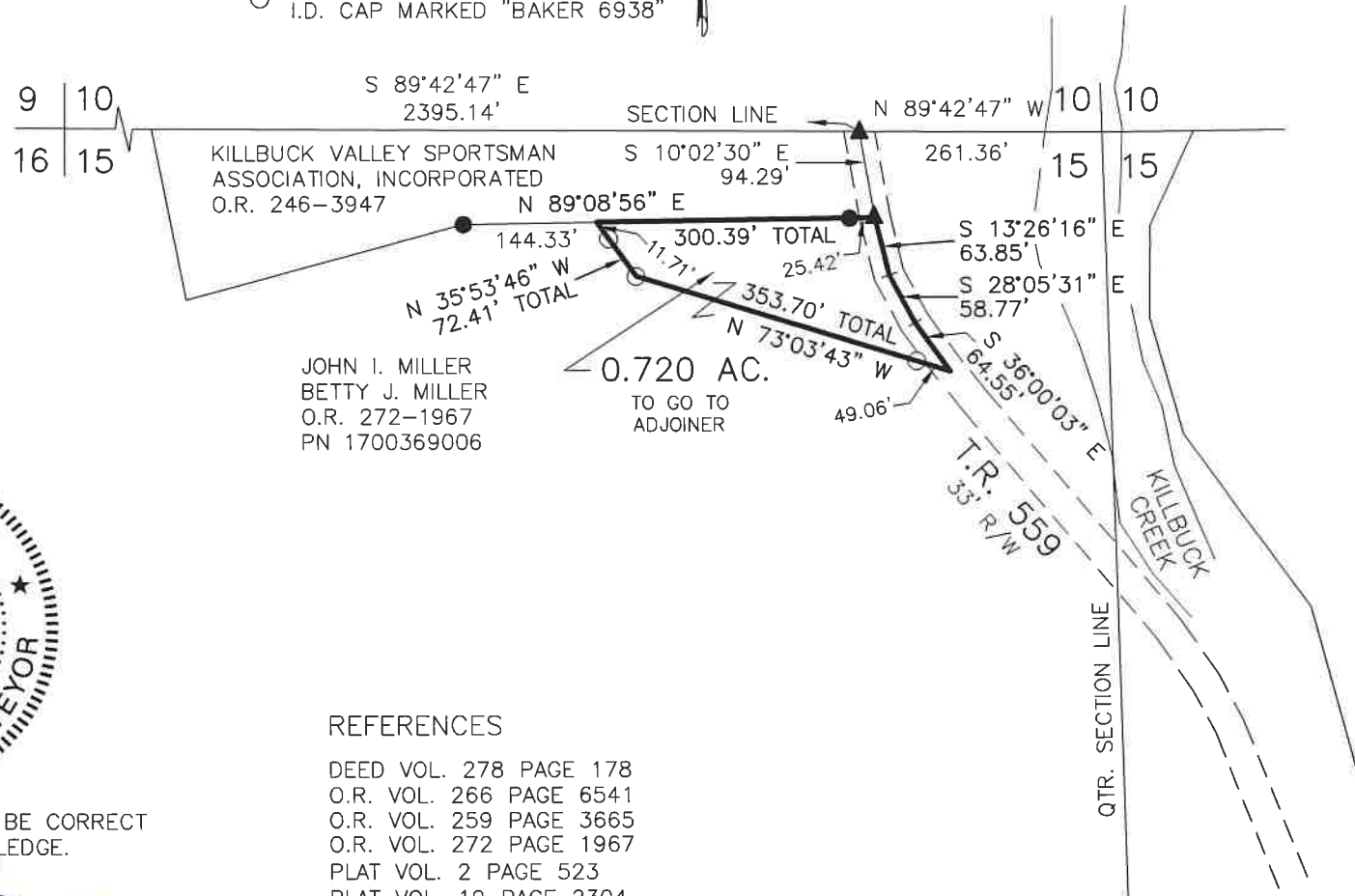
ANITA HALL, COUNTY RECORDER

07/27/2022 11:38 AM

SMALL PLAT . 40.00

PAGES: 1

ORV 282 PG 3525



JOHN I. MILLER  
 BETTY J. MILLER  
 O.R. 272-1967  
 PN 1700369006

0.720 AC.  
 TO GO TO  
 ADJOINER

APPROVED FOR TRANSFER ONLY

NO SUBDIVISION PLAT REQUIRED

(O.R.C. 711.001 & 711.131)

Lot(s) not for building unless  
 approved by Board of Health



HOLMES CO. PLANNING COMMISSION

By AO Date 6/3/2022



I CERTIFY THIS SURVEY TO BE CORRECT  
 TO THE BEST OF MY KNOWLEDGE.

*Donald C. Baker*

DONALD C. BAKER P.S. 6938

DATE: APRIL 14, 2022

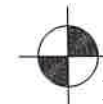
FDB\KES

FILE NAME: WORK6\S-707-21\CNK

REFERENCES

- DEED VOL. 278 PAGE 178
- O.R. VOL. 266 PAGE 6541
- O.R. VOL. 259 PAGE 3665
- O.R. VOL. 272 PAGE 1967
- PLAT VOL. 2 PAGE 523
- PLAT VOL. 19 PAGE 2304

BASIS OF BEARINGS FROM  
 OHIO STATE PLANE COORDINATE  
 SYSTEM, NORTH ZONE, N.A.D. 83  
 (2011 ADJUSTMENT)



BAKER SURVEYING, LLC  
 138 N. CLAY STREET  
 MILLERSBURG, OHIO 44654  
 PH. 330-674-4788  
 EMAIL: bakersurveying@gmail.com

**Plat Approved**

Holmes County Map Office

6/1/2022 MM