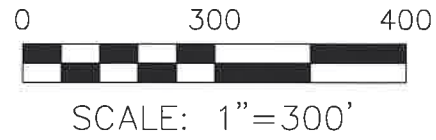


CLARK TOWNSHIP
 N.W. QTR. SECTION 11
 T-8 N; R-5 W
 HOLMES COUNTY, OHIO

SURVEYED FOR: ATLEE HERSHBERGER



- 5/8" REBAR FOUND UNLESS OTHERWISE NOTED
- 5/8" REBAR SET WITH I.D. CAP I.D. CAP MARKED "BAKER SURVEYING LLC"

REFERENCES

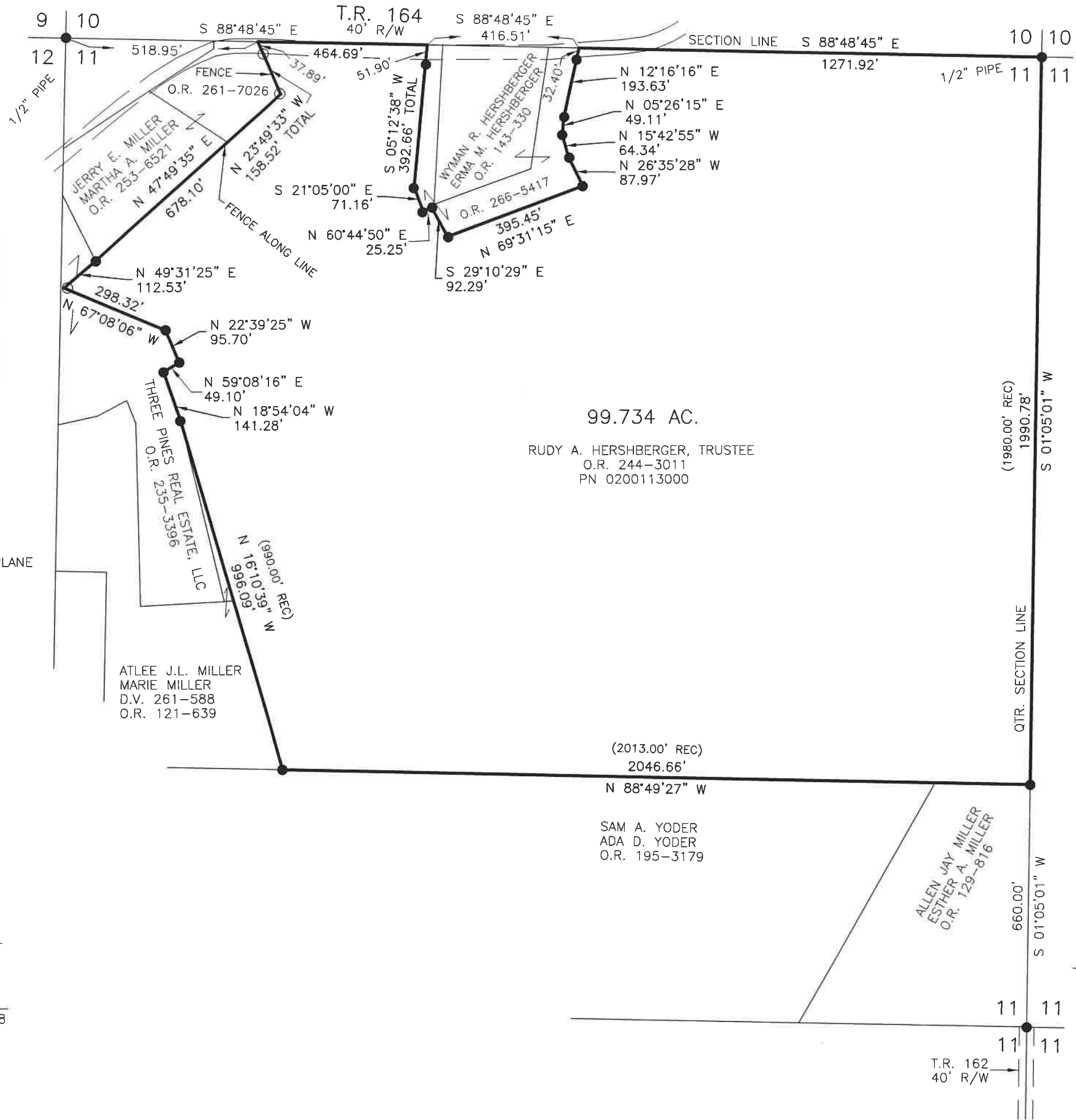
- O.R. VOL. 244 PAGE 3011
- O.R. VOL. 121 PAGE 639
- O.R. VOL. 253 PAGE 6521
- O.R. VOL. 143 PAGE 330
- O.R. VOL. 195 PAGE 3179
- PLAT VOL. 18 PAGE 368
- PLAT VOL. 18 PAGE 437

BASIS OF BEARINGS FROM OHIO STATE PLANE COORDINATE SYSTEM, NORTH ZONE, N.A.D. 83, 2011 ADJUSTMENT



I CERTIFY THIS SURVEY TO BE CORRECT TO THE BEST OF MY KNOWLEDGE.

Donald C. Baker
 DONALD C. BAKER P.S. 6938
 DATE: MAY 18, 2022
 TAB\VJD
 FILE NAME: WORK5\S-242-22\CNK



202200003252
 B: 19 P: 4737
 FILED FOR RECORD IN
 HOLMES COUNTY, OH
 ANITA HALL, COUNTY RECORDER
 07/13/2022 02:40 PM
 SMALL PLAT . 40.00
 PAGES: 1
 ORV 282 PG 2129

APPROVED FOR TRANSFER ONLY
 NO SUBDIVISION PLAT REQUIRED
 (O.R.C. 711.001 & 711.131)
 Lot(s) not for building unless approved by Board of Health
 HOLMES CO. PLANNING COMMISSION
 By TS Date 5/27/2022

Plat Approved
 Holmes County Map Office
5/27/2022 MM

BAKER SURVEYING, LLC
 138 N. CLAY STREET
 MILLERSBURG, OHIO 44654
 PH. 330-674-4788
 EMAIL: bakersurveying@gmail.com