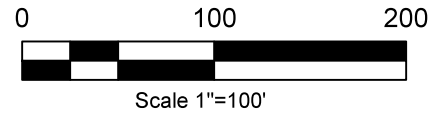
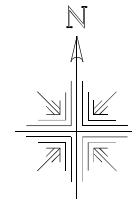


**Clark Township
N.W. Qtr. Section 17
T-8 N; R-4 W
Holmes County, Ohio**

SURVEYED FOR: Marvin Hershberger



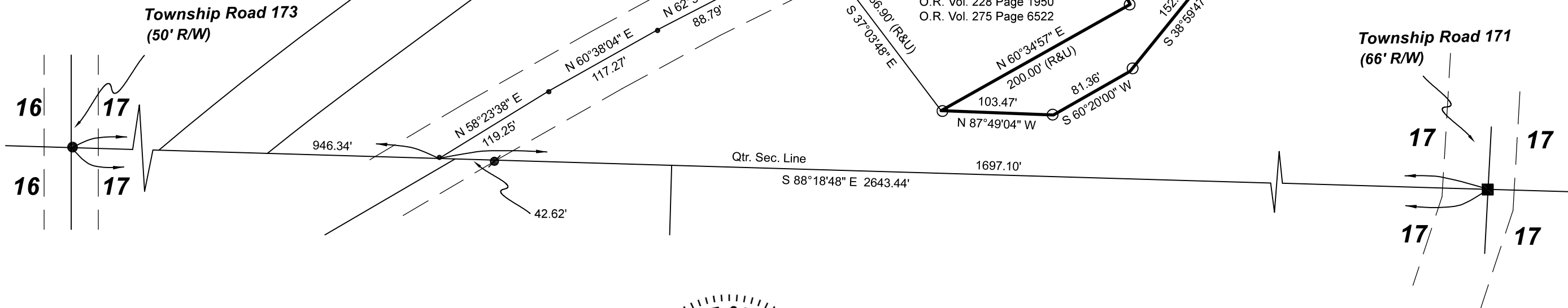
REFERENCES:

Deeds as shown

Surveys Plat Vol. 6 Page 8 Plat Vol. 17 Page 591
 Plat Vol. 19 Page 870 Plat Vol. 17 Page 555
 Plat Vol. 19 Page 4655 Plat Vol. 6 Page 5
 Plat Vol. 17 Page 122

Basis of Bearing Grid North, Ohio State Plane
 Coordinate System, North Zone, NAD 83

- Stone Found
- 5/8" Rebar Found
- ◆ 3/4" Rebar Found
- ⊙ 5/8" Capped Pin Found "Baker"
- 5/8" Capped Pin Set "Galbraith"
- Point

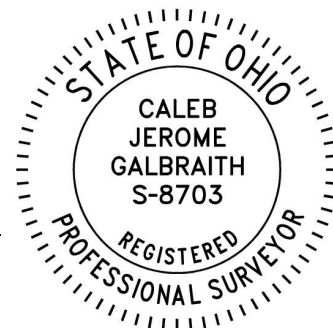


202200002464
 B: 19 P: 4705
 FILED FOR RECORD IN
 HOLMES COUNTY, OH
 ANITA HALL, COUNTY RECORDER
 05/25/2022 01:58 PM
 SMALL PLAT . 40.00
 PAGES: 1
 ORV 281 PG 5312

Pioneer Surveying & Services, LLC.
 5434 Township Road 377
 Millersburg, Ohio 44654
 Phone: 330-231-0497
 Email: caleb@pioneersurveyingandservices.com

I certify this survey to be correct to the best of
 my knowledge.

Caleb Jerome Galbraith
 Caleb Jerome Galbraith P.S. 8703
 Date: April 14, 2022
 Job ID: 6022-C32



APPROVED FOR TRANSFER ONLY
 NO SUBDIVISION PLAT REQUIRED
 (O.R.C. 711.001 & 711.131)
 Lot(s) not for building unless
 approved by Board of Health
 HOLMES CO. PLANNING COMMISSION
 By AO Date 5/12/2022



Plat Approved
 Holmes County Map Office
4/28/2022 BH

