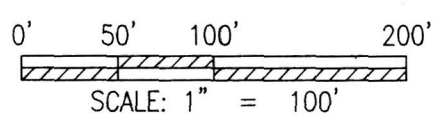


20220001570
 B: 19 P: 4666
 FILED FOR RECORD IN
 HOLMES COUNTY, OH
 ANITA HALL, COUNTY RECORDER
 04/04/2022 12:56 PM
 SMALL PLAT . 40.00
 PAGES: 1
 ORV 281 PG 386

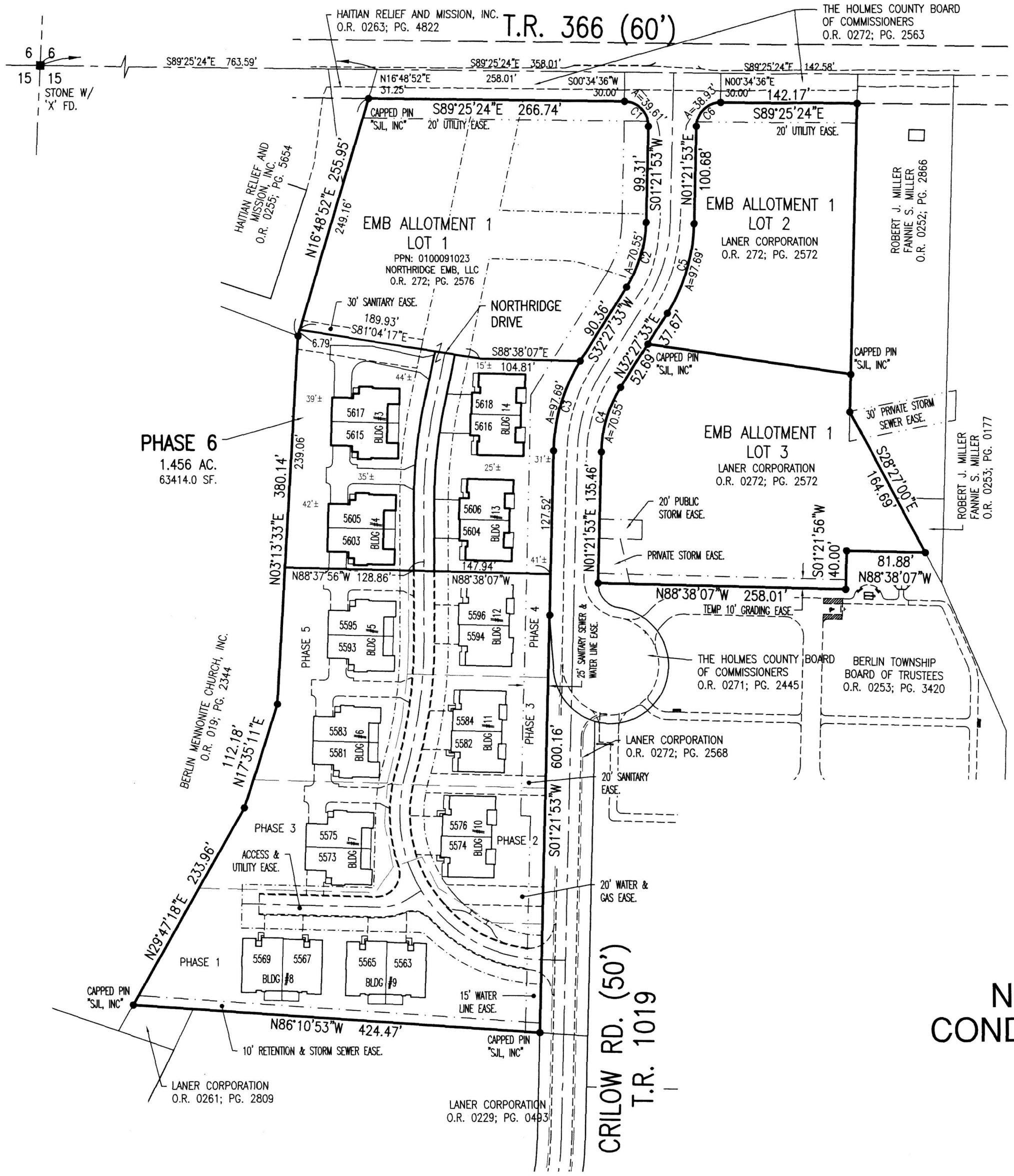
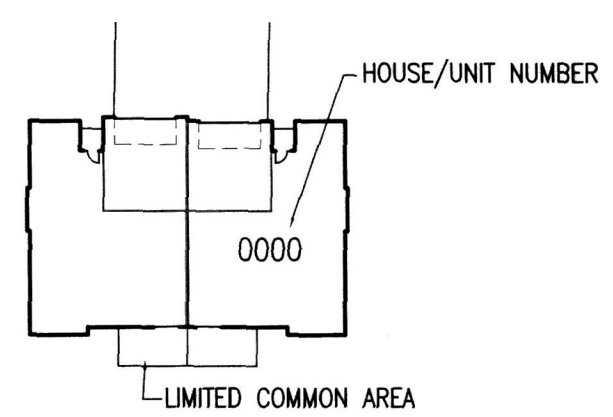


- STONE FOUND
- ✕ SPIKE FOUND
- CAPPED PIN FD. MARKED BAKER (UNLESS NOTED)

REFERENCE SURVEY:
 O.R. VOL. 229; PG. 493
 PLAT VOL. 19; PG. 1925
 PLAT VOL. 19; PG. 2344
 PLAT VOL. 19; PG. 4076

BASIS OF BEARING:
 The bearings as shown
 hereon are relative to GRID
 NORTH of the OHIO STATE
 PLANE COORDINATE SYSTEM,
 NAD 83 DATUM

- PARCEL 6.794 AC.
 - PHASE 1 1.170 AC.
 - PHASE 2 0.434 AC.
 - PHASE 3 0.831 AC.
 - PHASE 4 0.359 AC.
 - PHASE 5 0.672 AC.
 - PHASE 6 1.456 AC.
 RESIDUE 1.872 AC.



**NORTHRIDGE EMB
 CONDOMINIUMS, PHASE 6**
 PART OF LOT 1
 EMB ALLOTMENT 1
 PLAT VOL. 19; PG. 4076
 BERLIN TOWNSHIP
 N.E. QTR. SEC. 15
 T-9N ; R-5W
 HOLMES COUNTY, OHIO

LEGEND

UNIT	LIVING	BASEM'T	GARAGE	PORCH	DECK	PATIO	TOTALS
5603	1471 SF.	-----	528 SF.	36 SF.	200 SF.	-----	2235 SF.
5605	1471 SF.	-----	528 SF.	36 SF.	200 SF.	-----	2235 SF.
5604	1519 SF.	-----	531 SF.	120 SF.	126 SF.	-----	2422 SF.
5606	1644 SF.	-----	509 SF.	120 SF.	-----	160 SF.	2433 SF.
5615	1471 SF.	-----	528 SF.	36 SF.	200 SF.	-----	2235 SF.
5617	1471 SF.	-----	528 SF.	36 SF.	200 SF.	-----	2235 SF.
5616	1519 SF.	-----	531 SF.	120 SF.	126 SF.	-----	2422 SF.
5618	1644 SF.	-----	509 SF.	120 SF.	-----	160 SF.	2433 SF.

CURVE TABLE

NO.	ARC	RADIUS	DELTA	BEARING	CHORD
C1	39.61'	25.00'	90°47'09"	S44°01'41"E	35.60'
C2	70.55'	130.00'	31°05'40"	S16°54'43"W	69.69'
C3	97.69'	180.00'	31°05'40"	S16°54'43"W	96.49'
C4	70.55'	130.00'	31°05'40"	N16°54'43"E	69.69'
C5	97.69'	180.00'	31°05'40"	N16°54'43"E	96.49'
C6	38.93'	25.00'	89°12'43"	N45°58'10"E	35.11'

**SHAFFER, JOHNSTON, LICHTENWALTER
 & ASSOCIATES, INC.**
 Consulting Engineers & Surveyors
 3477 Commerce Parkway, Suite C
 Wooster, Ohio 44691
 TEL (330) 345-6377 FAX (330) 345-6725 EMAIL sjl@sjl-inc.com

DRAWN C. Falb	CHECKED	SCALE 1" = 100'	DATE 03/01/22
------------------	---------	--------------------	------------------

DWG NO: **EW-2419EA-COND06** JOB NO: **EW-2419EA** SHEET **2** OF **6**