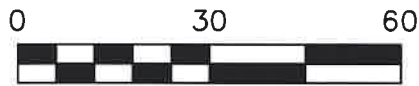


ALLEY VACATION PLAT

VILLAGE OF HOLMESVILLE
 PRAIRIE TOWNSHIP
 S.E. QTR. SECTION 3
 T-13 N; R-13 W
 HOLMES COUNTY, OHIO

SURVEYED FOR: JESSE WARDELL



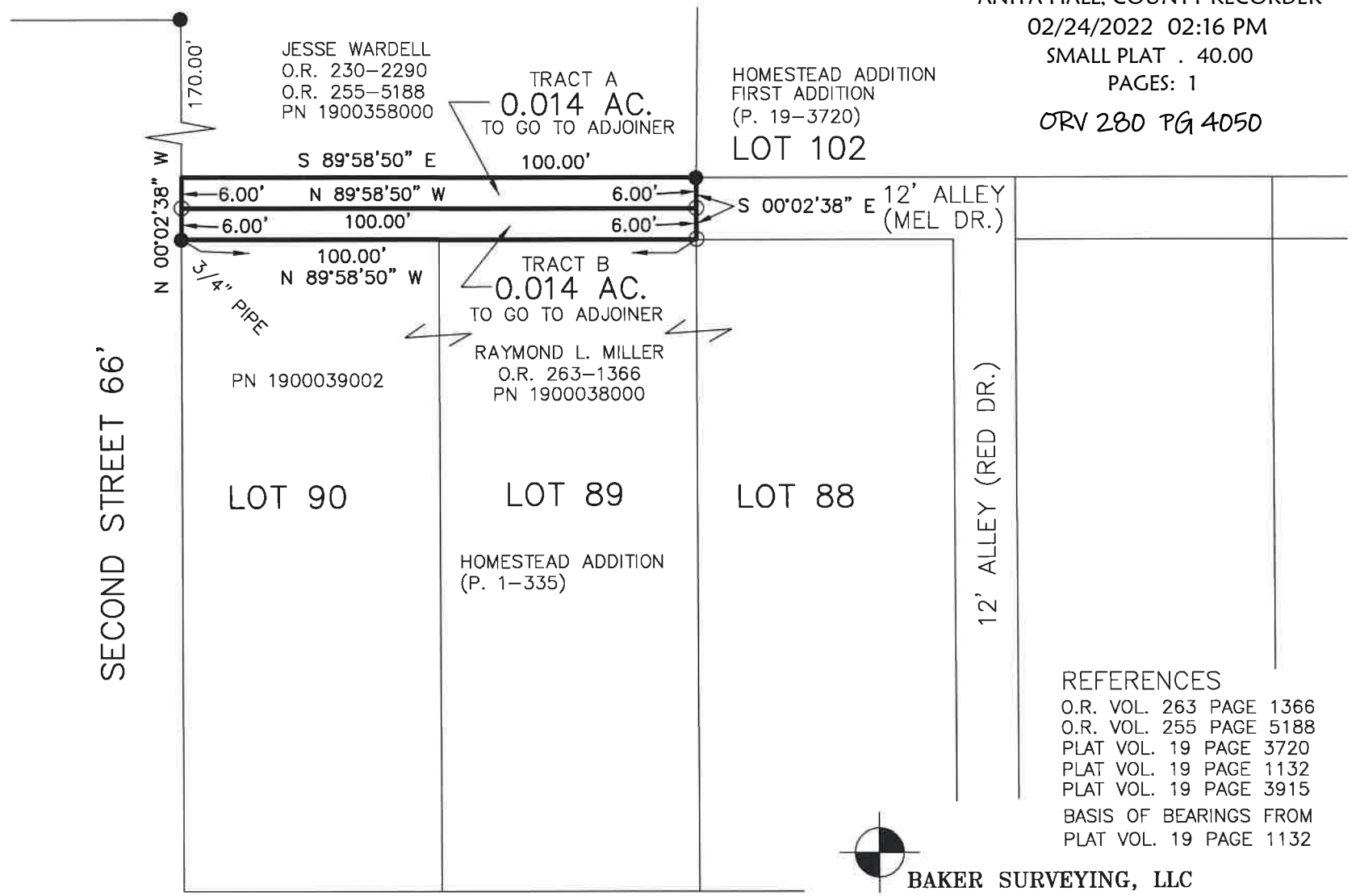
SCALE: 1"=30'

- 5/8" REBAR FOUND UNLESS OTHERWISE NOTED
- 5/8" REBAR SET WITH I.D. CAP I.D. CAP MARKED "BAKER 6938"



I CERTIFY THIS SURVEY TO BE CORRECT TO THE BEST OF MY KNOWLEDGE.

Donald C. Baker
 DONALD C. BAKER P.S. 6938
 DATE: JUNE 26, 2020
 FDB\KES
 FILE NAME: WORK6\S-347-20\CNK



202200000865
 B: 19 P: 4630
 FILED FOR RECORD IN
 HOLMES COUNTY, OH
 ANITA HALL, COUNTY RECORDER
 02/24/2022 02:16 PM
 SMALL PLAT . 40.00
 PAGES: 1
 ORV 280 PG 4050

REFERENCES
 O.R. VOL. 263 PAGE 1366
 O.R. VOL. 255 PAGE 5188
 PLAT VOL. 19 PAGE 3720
 PLAT VOL. 19 PAGE 1132
 PLAT VOL. 19 PAGE 3915
 BASIS OF BEARINGS FROM
 PLAT VOL. 19 PAGE 1132



BAKER SURVEYING, LLC
 138 N. CLAY STREET
 MILLERSBURG, OHIO 44654
 PH. 330-674-4788
 EMAIL: bakersurveying@gmail.com

Plat Approved
 Holmes County Map Office
 2/18/2022 BH