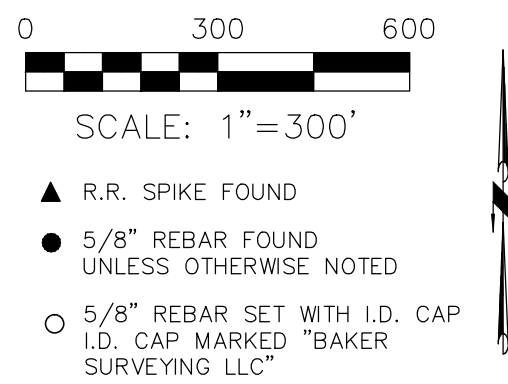


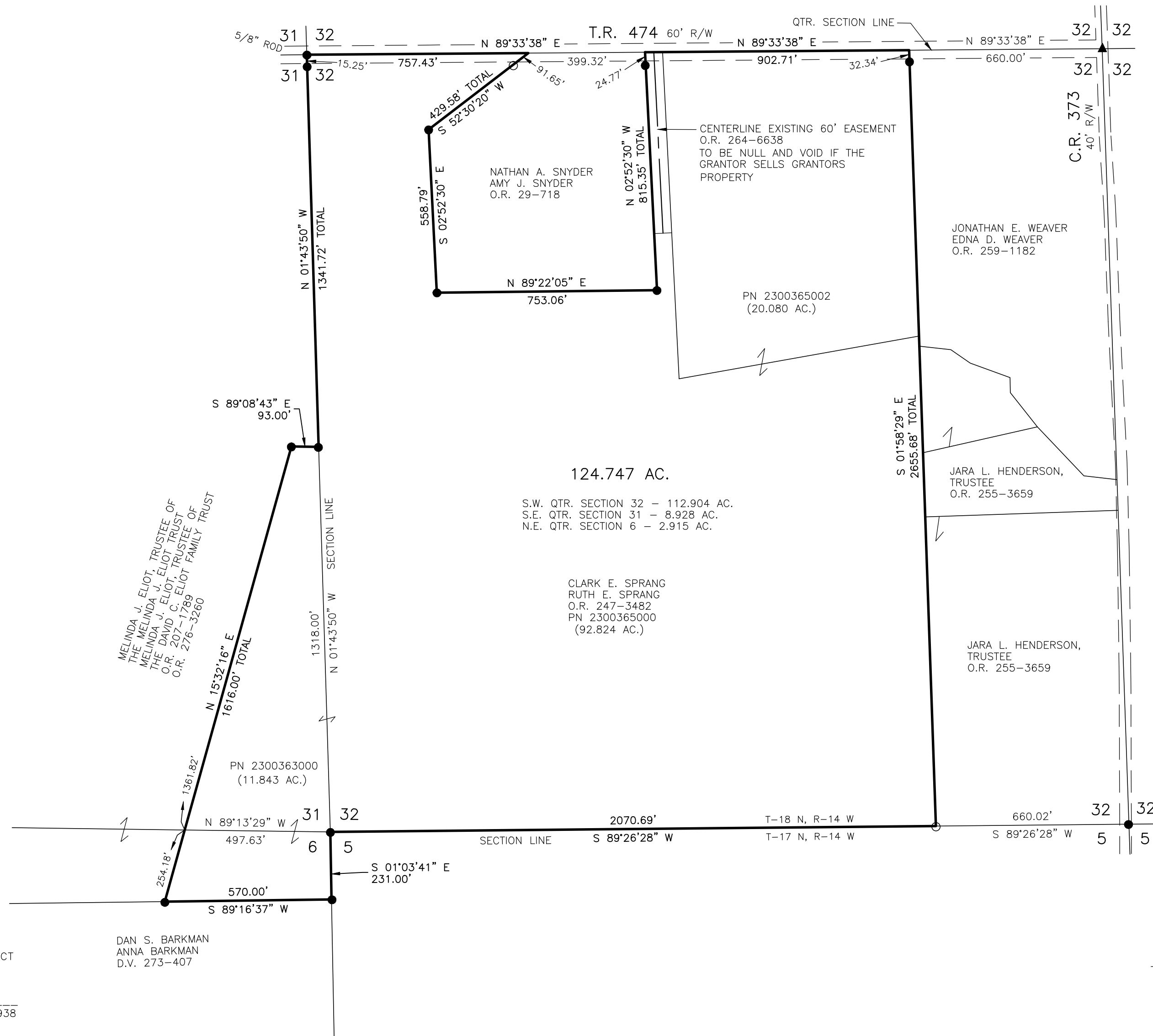
RIPLEY TOWNSHIP
 S.E. QTR. SECTION 31
 S.W. QTR. SECTION 32
 T-18 N; R-14 W
 N.E. QTR. SECTION 6
 T-17 N; R-14 W
 HOLMES COUNTY, OHIO
 SURVEYED FOR: STEVE ANDREWS



202100018644
 B: 19 P: 4552
 FILED FOR RECORD IN
 HOLMES COUNTY, OH
 ANITA HALL, COUNTY RECORDER
 11/17/2021 12:32 PM
 SMALL PLAT . 40.00
 PAGES: 1
 ORV 279 PG 3110

- REFERENCES
- DEED VOL. 273 PAGE 407
 - O.R. VOL. 29 PAGE 718
 - O.R. VOL. 259 PAGE 1182
 - O.R. VOL. 255 PAGE 3659
 - O.R. VOL. 247 PAGE 3482
 - O.R. VOL. 276 PAGE 3260
 - PLAT VOL. 16 PAGE 545
 - PLAT VOL. 14 PAGE 718
 - PLAT VOL. 14 PAGE 374
 - PLAT VOL. 19 PAGE 3540

BASIS OF BEARINGS FROM
 OHIO STATE PLANE COORDINATE
 SYSTEM, NORTH ZONE, N.A.D. 83



APPROVED FOR TRANSFER ONLY
 NO SUBDIVISION PLAT REQUIRED
 (O.R.C. 711.001 & 711.131)
 Lot(s) not for building unless
 approved by Board of Health
 HOLMES CO. PLANNING COMMISSION
 By TS Date 11/3/2021

Plat Approved
 Holmes County Map Office
 11/2/2021 BH



I CERTIFY THIS SURVEY TO BE CORRECT
 TO THE BEST OF MY KNOWLEDGE.

 DONALD C. BAKER P.S. 6938
 DATE: OCT. 10, 2021
 VJD
 FILE NAME: WORK5\S-580-21\CNK

DAN S. BARKMAN
 ANNA BARKMAN
 D.V. 273-407

BAKER SURVEYING, LLC
 138 N. CLAY STREET
 MILLERSBURG, OHIO 44654
 PH. 330-674-4788
 EMAIL: bakersurveying@gmail.com