

Washington Township
S.E. Qtr. Sec. 26
N.E. Qtr. Sec. 35
T-20 N; R-15 W
Holmes County, Ohio

SURVEYED FOR: Pam Peebles

REFERENCES:
Deeds as shown

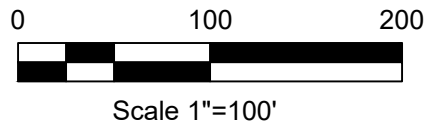
Plat Vol. 19 Page 676
Plat Vol. 14 Page 708
Plat Vol. 16 Page 796
Plat Vol. 06 Page 59
unrecorded plat of Correction by Jamie Darr dated April 20, 2007
unrecorded plat of Correction by Donald C. Baker dated May 31, 1988

Basis of Bearing: Grid North, Ohio State Plane Coordinate System, Ohio North Zone, NAD 83.

MASTER PLAT: The Purpose of this survey.

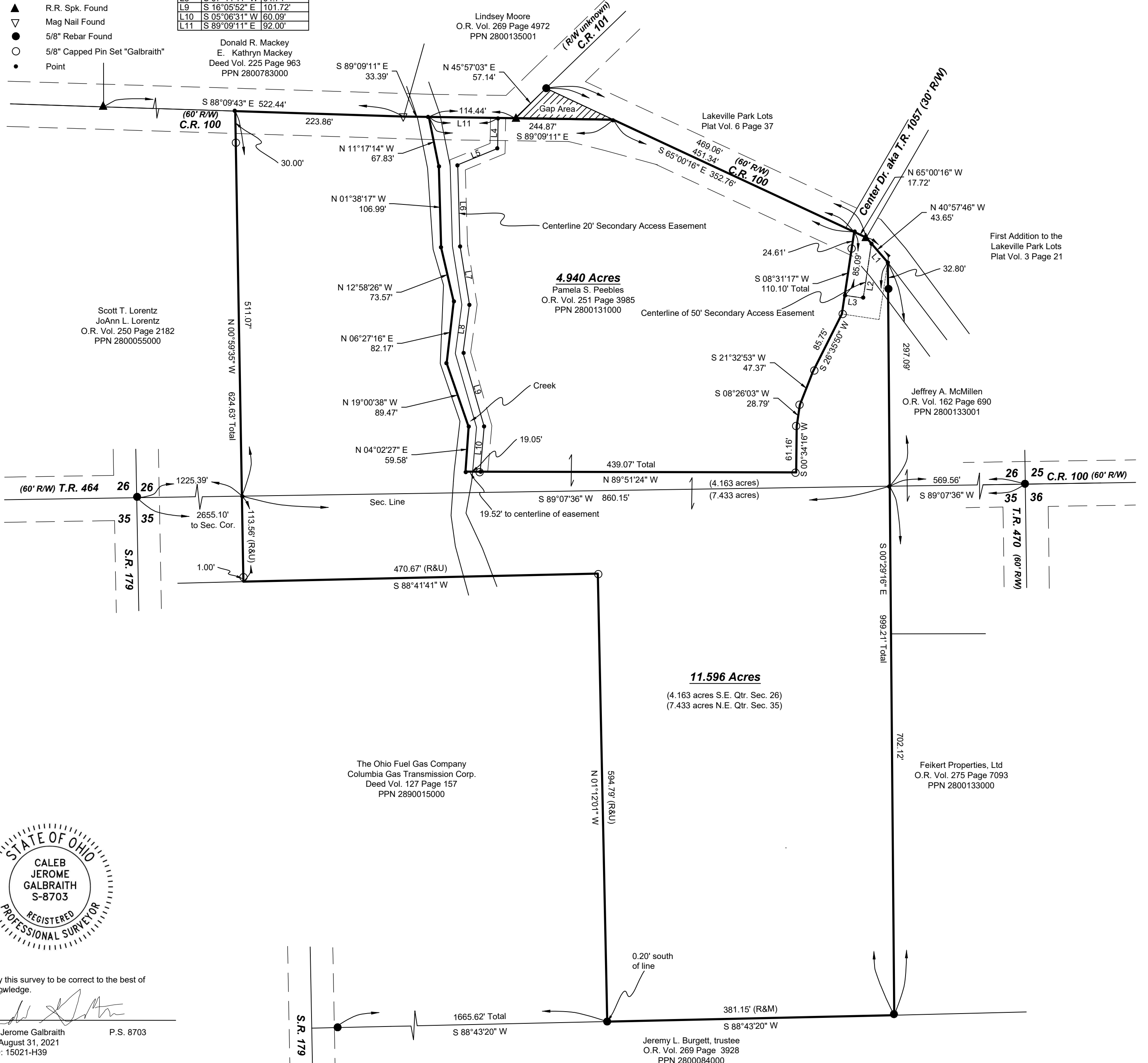
Action 1.) Convey 4.940 acres from Pamela S. Peebles (out of PPN 2800131000) with a 50' secondary access easement
Action 2.) Convey 11.596 acre parcel from Pamela S. Peebles (balance of PPN 2800131000) with a 20' secondary access easement.

202100018422
B: 19 P: 4539
FILED FOR RECORD IN
HOLMES COUNTY, OH
ANITA HALL, COUNTY RECORDER
11/03/2021 10:26 AM
SMALL PLAT . 40.00
PAGES: 1
ORV 279 PG 1817
ORV 279 PG 1822



LINE	BEARING	DISTANCE
L1	N 40°57'46" W	33.12'
L2	S 08°31'17" W	73.23'
L3	N 81°28'43" W	25.00'
L4	S 01°05'41" W	40.56'
L5	S 67°39'43" W	57.31'
L6	S 01°38'18" E	106.95'
L7	S 09°10'50" E	79.56'
L8	S 07°44'41" W	64.74'
L9	S 16°05'52" E	101.72'
L10	S 05°06'31" W	60.09'
L11	S 89°09'11" E	192.00'

- ▲ R.R. Spk. Found
- ▽ Mag Nail Found
- 5/8" Rebar Found
- 5/8" Capped Pin Set "Galbraith"
- Point



I certify this survey to be correct to the best of my knowledge.

Caleb Jerome Galbraith
Caleb Jerome Galbraith P.S. 8703
Date: August 31, 2021
Job ID: 15021-H39

Pioneer Surveying & Services, LLC.
5434 Township Road 377
Millersburg, Ohio 44654
Phone: 330-231-0497
Email: caleb@pioneersurveyingandservices.com



APPROVED FOR TRANSFER ONLY
NO SUBDIVISION PLAT REQUIRED
(O.R.C. 711.001 & 711.131)
Lot(s) not for building unless approved by Board of Health
HOLMES CO. PLANNING COMMISSION
By AO Date 10/26/2021

Plat Approved
Holmes County Map Office
10/19/2021 Rg