

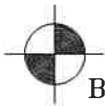
VILLAGE OF MILERSBURG
 PART OF LOT 831
 LAKEVIEW ADDITION (P.2-38)
 HARDY TOWNSHIP
 N.W. QTR. SECTION 11
 T-9 N; R-7 W
 HOLMES COUNTY, OHIO

SURVEYED FOR: FRANK ARNOLD

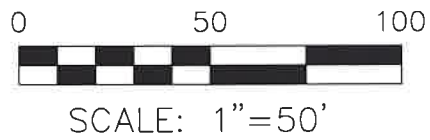
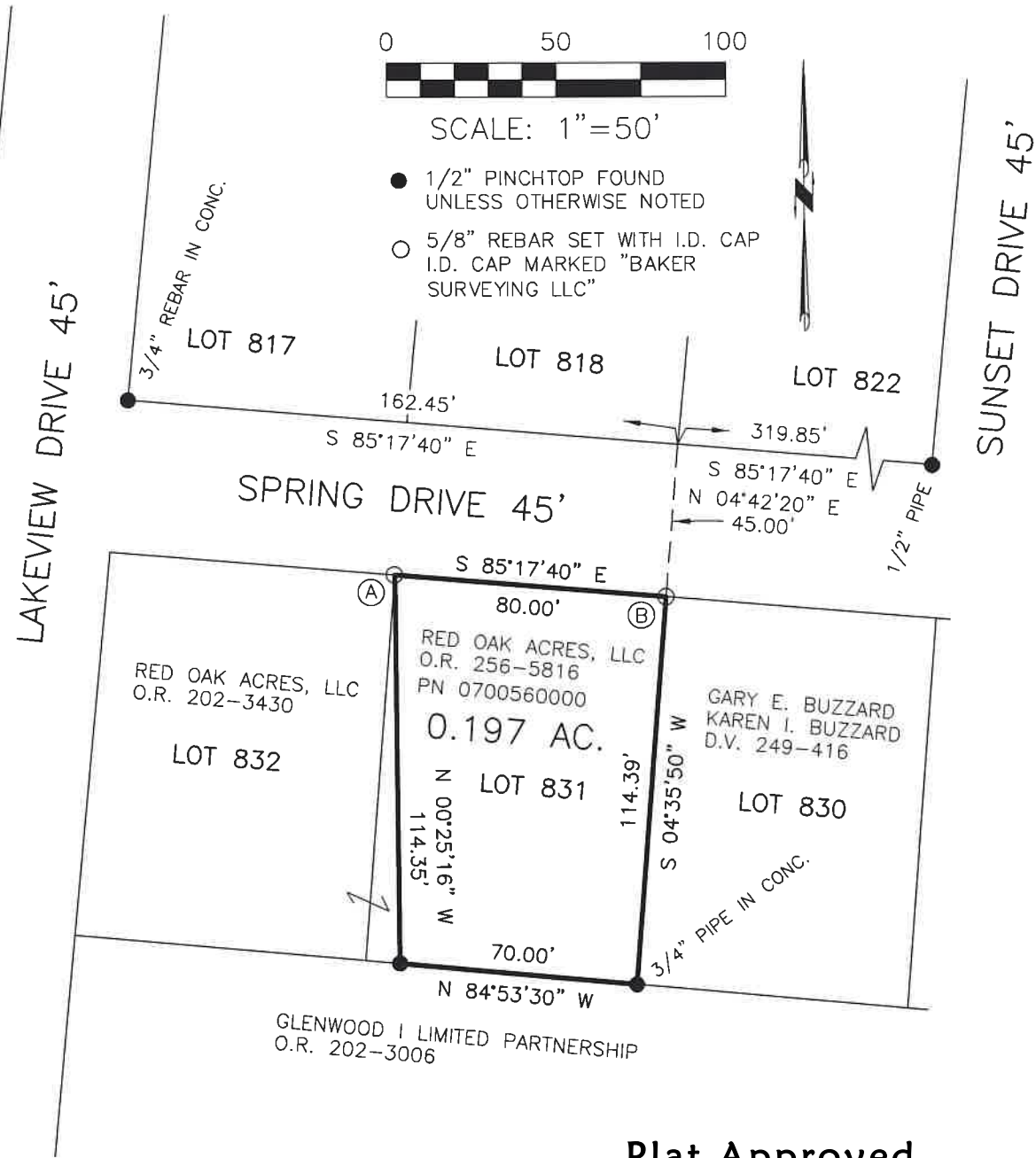
REFERENCES

- O.R. VOL. 202 PAGE 3006
- O.R. VOL. 202 PAGE 3430
- O.R. VOL. 256 PAGE 5816
- PLAT VOL. 2 PAGE 38
- PLAT VOL. 19 PAGE 1259
- BASIS OF BEARINGS FROM PLAT VOL. 19 PAGE 1259

- 3/4" PIPE IN CONCRETE
- (A) FOUND S 23°33'11" E
0.66' FROM CORNER
- 1/2" PINCHTOP IN CONCRETE
- (B) FOUND S 63°21'06" E
0.31' FROM CORNER



BAKER SURVEYING, LLC
 138 N. CLAY STREET
 MILLERSBURG, OHIO 44654
 PH. 330-674-4788
 EMAIL: bakersurveying@gmail.com



- 1/2" PINCHTOP FOUND UNLESS OTHERWISE NOTED
- 5/8" REBAR SET WITH I.D. CAP I.D. CAP MARKED "BAKER SURVEYING LLC"

202100018053
 B: 19 P: 4519
 FILED FOR RECORD IN
 HOLMES COUNTY, OH
 ANITA HALL, COUNTY RECORDER
 10/15/2021 10:27 AM
 SMALL PLAT . 40.00
 PAGES: 1
 ORV 278 PG 7282

APPROVED FOR TRANSFER ONLY
 NO SUBDIVISION PLAT REQUIRED
 (O.R.C. 711.001 & 711.131)
 Lot(s) not for building unless
 approved by Board of Health
 HOLMES CO. PLANNING COMMISSION
 By TS Date 8/17/2021



I CERTIFY THIS SURVEY TO BE CORRECT TO THE BEST OF MY KNOWLEDGE.

AL

AARON L. GERBER P.S. 8379
 DATE: JULY 26, 2021
 ALG\BTB
 FILE NAME: WORK5\S-408-21\ALG

Plat Approved
 Holmes County Map Office
8/17/2021 Rg