

RIPLEY TOWNSHIP
S.W. QTR. SECTION 7
T-17 N; R-14 W
HOLMES COUNTY, OHIO

SURVEYED FOR: TOM LANG



SCALE: 1"=200'

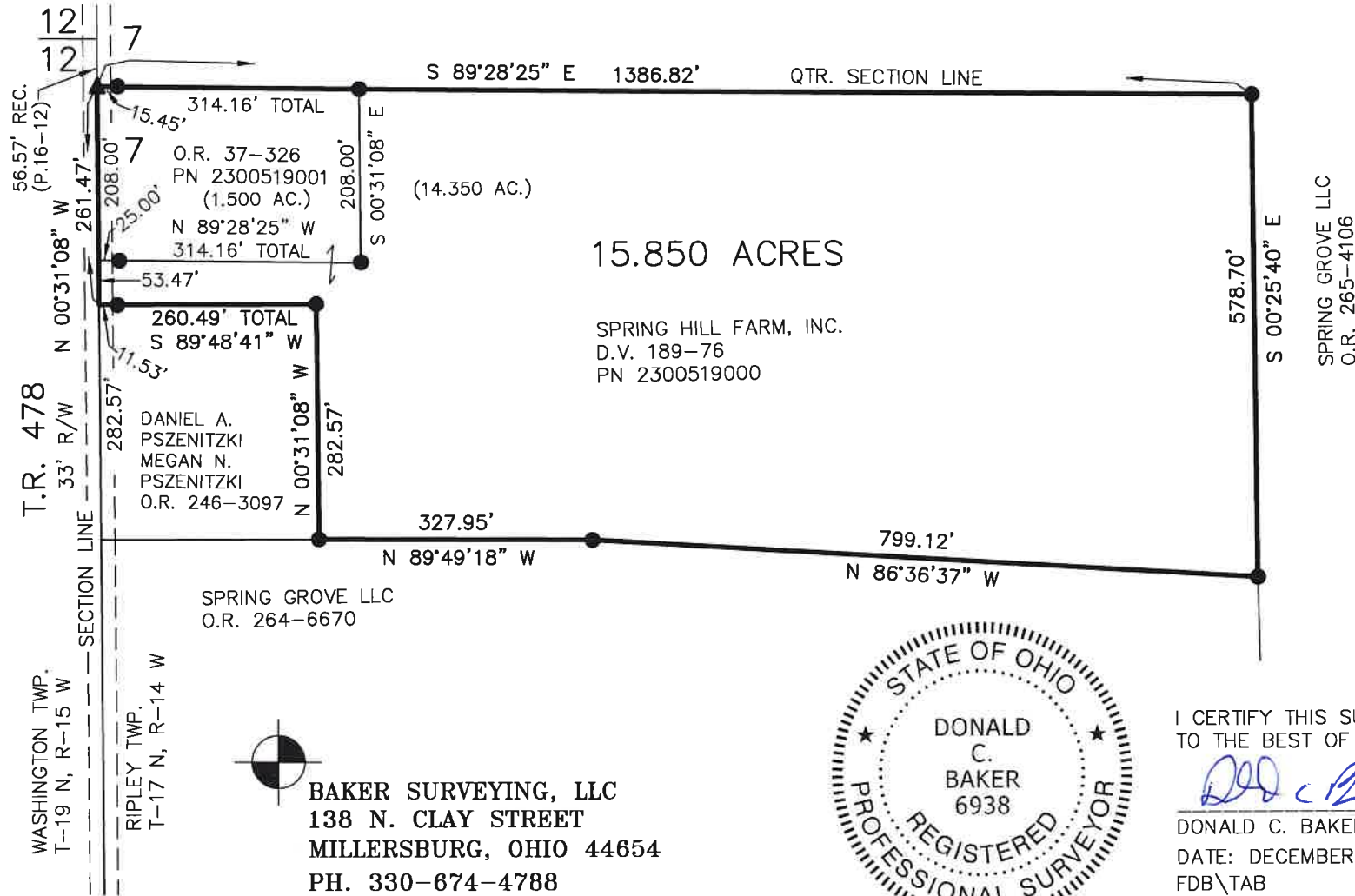
- 5/8" REBAR FOUND
UNLESS OTHERWISE NOTED
- ▲ R.R. SPIKE FOUND

REFERENCES

DEED VOL. 189 PAGE 76
O.R. VOL. 37 PAGE 326
O.R. VOL. 265 PAGE 4106
PLAT VOL. 12 PAGE 965
PLAT VOL. 19 PAGE 2219
PLAT VOL. 19 PAGE 895
PLAT VOL. 19 PAGE 3541
BEARINGS FROM PLAT VOL. 19 PAGE 3541

202100016355
B: 19 P: 4448
FILED FOR RECORD IN
HOLMES COUNTY, OH
ANITA HALL, COUNTY RECORDER
07/12/2021 01:08 PM
SMALL PLAT . 40.00
PAGES: 1

ORV 277 PG 5821
ORV 277 PG 5824



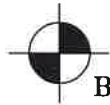
APPROVED FOR TRANSFER ONLY
NO SUBDIVISION PLAT REQUIRED
(O.R.C. 711.001 & 711.131)
Lot(s) not for building unless
approved by Board of Health
HOLMES CO. PLANNING COMMISSION
By TS Date 7/12/2021



Plat Approved

Holmes County Map Office

6/18/2021 BH



BAKER SURVEYING, LLC
138 N. CLAY STREET
MILLERSBURG, OHIO 44654
PH. 330-674-4788
EMAIL: bakersurveying@gmail.com



I CERTIFY THIS SURVEY TO BE CORRECT
TO THE BEST OF MY KNOWLEDGE.

Donald C. Baker

DONALD C. BAKER P.S. 6938
DATE: DECEMBER 12, 2019
FDB\TAB
FILE NAME: WORK6\S-674-19\MLD