

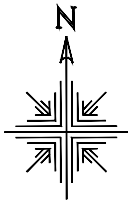
Walnut Creek Township
 S.W. Qtr. Section 19
 N.W. Qtr. Sec. 22
 T-9 N; R-5 W
 Holmes County, Ohio
 SURVEYED FOR: Ed Miller

202100016009
 B: 19 P: 4427
 FILED FOR RECORD IN
 HOLMES COUNTY, OH
 ANITA HALL, COUNTY RECORDER
 06/22/2021 03:44 PM
 SMALL PLAT . 40.00
 PAGES: 1
 ORV 277 PG 4015

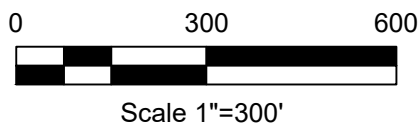
Deeds as shown

- Plat Vol. 18 Page 780
- Plat Vol. 18 Page 667
- Plat Vol. 02 Page 520
- Plat Vol. 19 Page 699
- Plat Vol. 19 Page 394
- Plat Vol. 19 Page 2952
- Plat Vol. 19 Page 3242
- Plat Vol. 10 Page 433
- Plat Vol. 02 Page 572
- Plat Vol. 19 Page 3214
- Plat Vol. 19 Page 2952
- Plat Vol. 02 Page 327

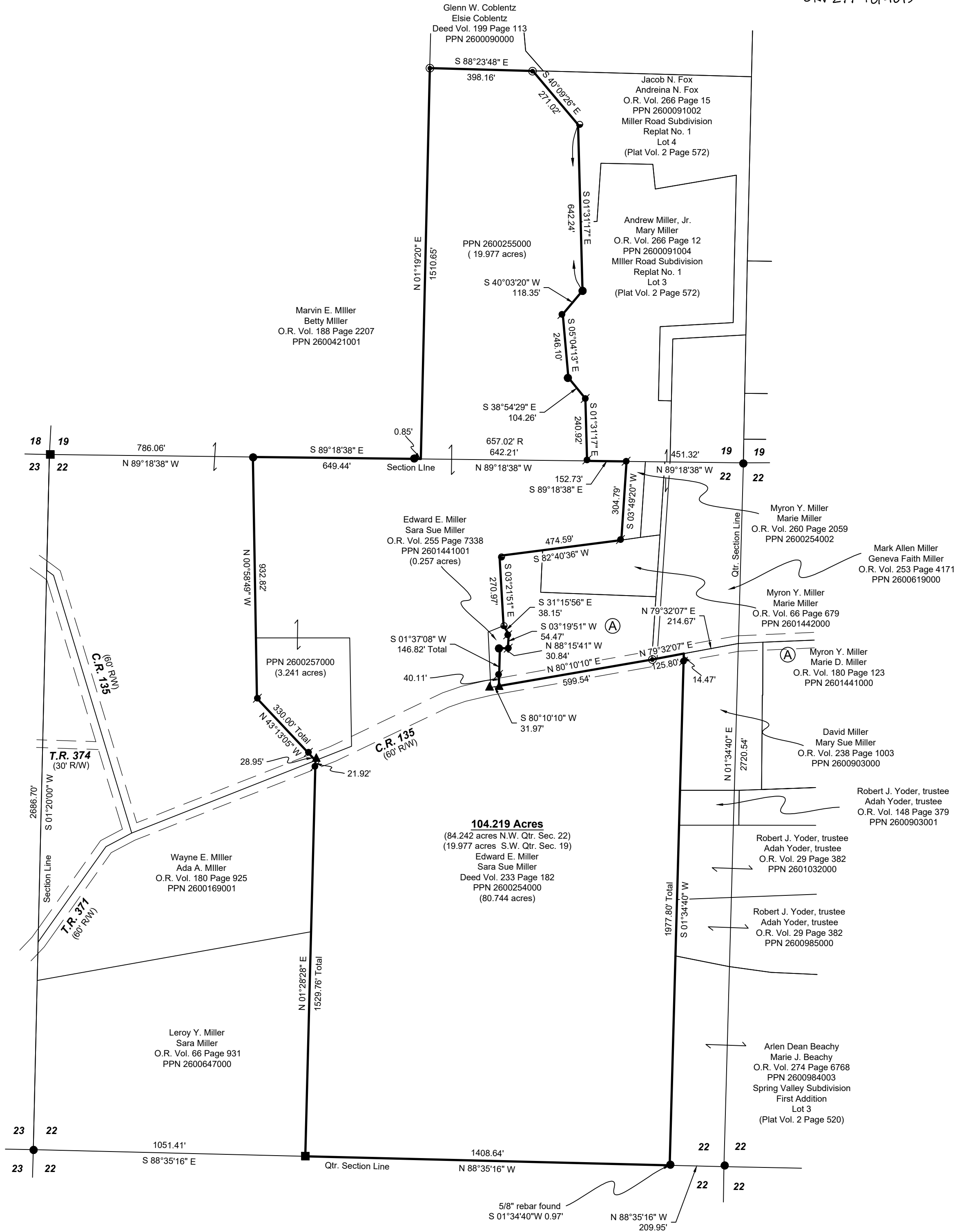
Basis of Bearing Grid North, Ohio State Plane
 Coordinate System, North Zone, NAD 83



REFERENCES:



- Stone Found
- 5/8" Rebar Found unless noted
- 3/4" Pipe Found
- 5/8" Capped Pin Found "Baker"
- Pinched Pipe Found
- 5/8" Capped Pin Set "Galbraith"
- ▲ Railroad Spike Found
- △ Mag Nail Set over Pin
- Point



I certify this survey to be correct to the best of my knowledge.

Caleb Galbraith

Caleb Jerome Galbraith P.S. 8703
 Date: April 16, 2021
 Job ID: 7821-H37

Pioneer Surveying & Services, LLC.
 5434 Township Road 377
 Millersburg, Ohio 44654
 Phone: 330-231-0497
 Email: caleb@pioneersurveyingandservices.com



APPROVED FOR TRANSFER ONLY
 NO SUBDIVISION PLAT REQUIRED
 (O.R.C. 711.001 & 711.131)
 Lot(s) not for building unless
 approved by Board of Health
 HOLMES CO. PLANNING COMMISSION
 By AO Date 6/16/2021



Plat Approved
 Holmes County Map Office
 6/14/2021 Rg