

LOCATION MAP

- STONE FOUND
- ✕ SPIKE FOUND
- CAPPED PIN FD.
- MARKED BAKER (UNLESS NOTED)

REFERENCE SURVEY:  
O.R. VOL. 229; PG. 493  
PLAT VOL. 19; PG. 1925  
PLAT VOL. 19; PG. 2344

BASIS OF BEARING:  
The bearings as shown  
hereon are relative to GRID  
NORTH OF THE OHIO STATE  
PLANE COORDINATE SYSTEM,  
NAD 83 DATUM



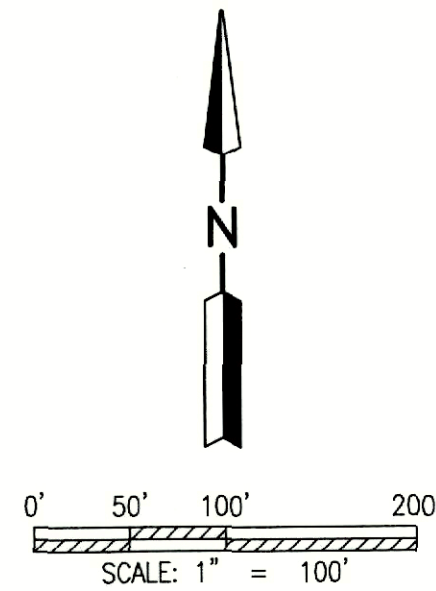
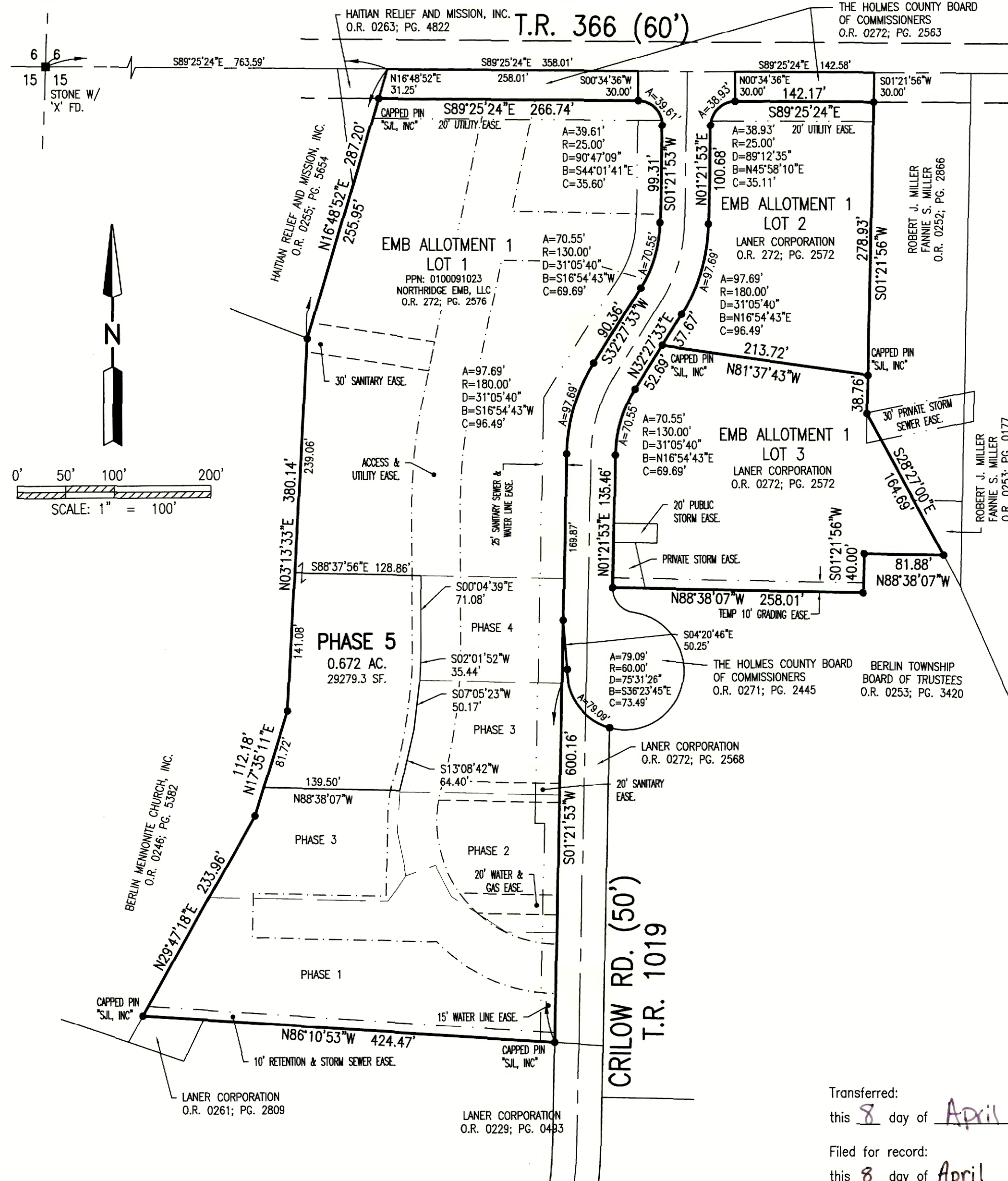
ENGINEER'S OR ARCHITECT'S DECLARATION: I declare that this plan shows graphically, insofar as possible, the layout and dimensions of units and of the buildings.

*John A. Long*  
John A. Long, P.E. 67239  
Date 2/23/21



SURVEYOR'S DECLARATION: I declare that this plan was prepared from an actual survey. That the same shows graphically, insofar as possible, the location of the boundaries, the layout, location and dimensions of units and of the buildings, the location and layout of limited common areas and facilities, the location and layout of common areas and facilities, and the location of appurtenant easements, if any.

*Mark E. Purdy*  
Mark E. Purdy, P.S. 7307  
Date 3-23-21



202100014605  
B: 19 P: 4359  
FILED FOR RECORD IN  
HOLMES COUNTY, OH  
ANITA HALL, COUNTY RECORDER  
04/08/2021 12:21 PM  
PLAT MED . 43.20  
PAGES: 1  
ORV 276 PG 3927

**NORTHRIDGE EMB  
CONDOMINIUMS, PHASE 5**  
PART OF LOT 1  
EMB ALLOTMENT 1  
PLAT VOL. 19; PG. 4076  
BERLIN TOWNSHIP  
N.E. QTR. SEC. 15  
T-9N ; R-5W  
HOLMES COUNTY, OHIO

Transferred:  
this 8 day of April, 2021. *Jackie McKee*  
Holmes County Auditor's Office  
Filed for record:  
this 8 day of April, 2021. *Anita Hall*  
Holmes County Recorder's Office  
#202100014605 in Volume 19, Page 4359.

**SHAFFER, JOHNSTON, LICHTENWALTER & ASSOCIATES, INC.**  
Consulting Engineers & Surveyors  
3477 Commerce Parkway, Suite C  
Wooster, Ohio 44691  
TEL (330) 345-6377 FAX (330) 345-6725 EMAIL sjl@sjl-inc.com

DRAWN C. Faib	CHECKED	1" SCALE = 100'	DATE 03/11/21
DWG NO: EW-2419EA-COND05		JOB NO: EW-2419EA	
			SHEET 1 OF 4