

VILLAGE OF MILLERSBURG

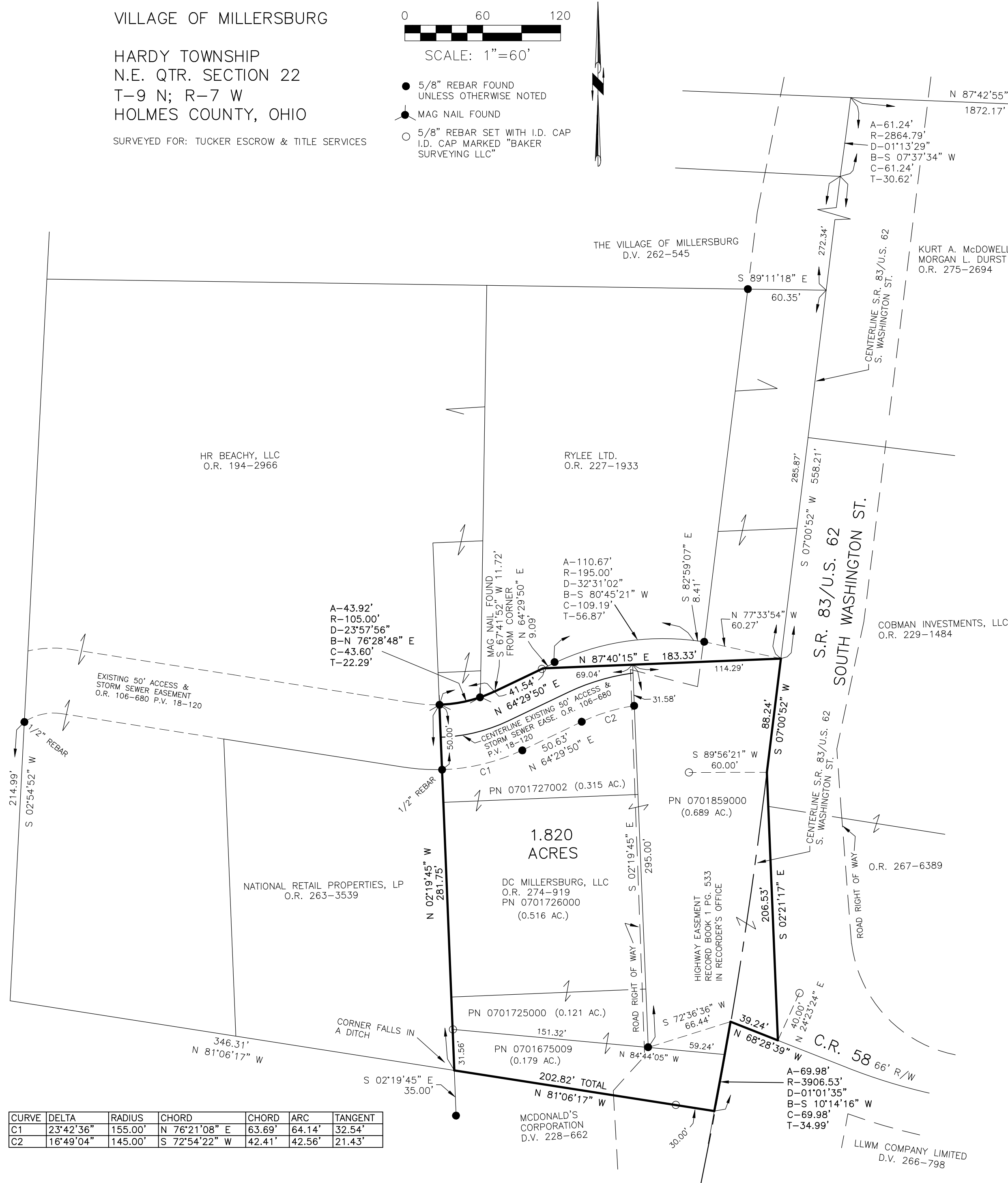
HARDY TOWNSHIP
N.E. QTR. SECTION 22
T-9 N; R-7 W
HOLMES COUNTY, OHIO

SURVEYED FOR: TUCKER ESCROW & TITLE SERVICES



SCALE: 1"=60'

- 5/8" REBAR FOUND UNLESS OTHERWISE NOTED
- MAG NAIL FOUND
- 5/8" REBAR SET WITH I.D. CAP I.D. CAP MARKED "BAKER SURVEYING LLC"



CURVE	DELTA	RADIUS	CHORD	CHORD	ARC	TANGENT
C1	23°42'36"	155.00'	N 76°21'08" E	63.69'	64.14'	32.54'
C2	16°49'04"	145.00'	S 72°54'22" W	42.41'	42.56'	21.43'

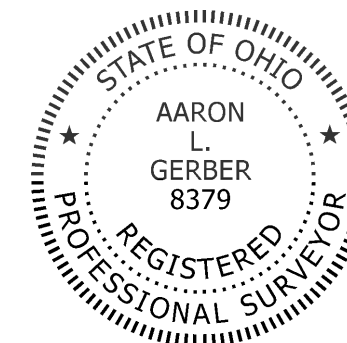
REFERENCES

- DEED VOL. 262 PAGE 545
- DEED VOL. 228 PAGE 662
- O.R. VOL. 194 PAGE 2966
- O.R. VOL. 26 PAGE 582
- O.R. VOL. 229 PAGE 1484
- O.R. VOL. 227 PAGE 1933
- O.R. VOL. 263 PAGE 3539
- O.R. VOL. 274 PAGE 919
- O.R. VOL. 275 PAGE 2694
- O.R. VOL. 267 PAGE 6389
- PLAT VOL. 2 PAGE 193
- PLAT VOL. 2 PAGE 353
- PLAT VOL. 18 PAGE 120
- PLAT VOL. 18 PAGE 298
- PLAT VOL. 19 PAGE 2291
- PLAT VOL. 19 PAGE 2292
- BASIS OF BEARINGS FROM OHIO STATE PLANE COORDINATE SYSTEM, NORTH ZONE, N.A.D. 83

202100014091
B:19 P: 4327
FILED FOR RECORD IN
HOLMES COUNTY, OH
ANITA HALL, COUNTY RECORDER
03/12/2021 02:46 PM
SMALL PLAT . 40.00
PAGES: 1
ORV 276 PG 1452

APPROVED FOR TRANSFER ONLY
NO SUBDIVISION PLAT REQUIRED
(O.R.C. 711.001 & 711.131)
Lot(s) not for building unless approved by Board of Health
HOLMES CO. PLANNING COMMISSION
By AO Date 3/4/2021

Plat Approved
Holmes County Map Office
3/3/2021 Rg



I CERTIFY THIS SURVEY TO BE CORRECT TO THE BEST OF MY KNOWLEDGE.

A.L.G.
AARON L. GERBER P.S. 8379
DATE: FEBRUARY 17, 2021
ALG
FILE NAME: WORK5\S-80-21\CNK

BAKER SURVEYING, LLC
138 N. CLAY STREET
MILLERSBURG, OHIO 44654
PH. 330-674-4788
EMAIL: bakersurveying@gmail.com