

KILLBUCK TOWNSHIP
 S.E. QTR. SECTION 3
 T-8 N; R-7 W
 HOLMES COUNTY, OHIO

SURVEYED FOR: BECKY STARR



SCALE: 1"=200'

- STONE FOUND
- 5/8" REBAR FOUND
- UNLESS OTHERWISE NOTED



APPROVED FOR TRANSFER ONLY
 NO SUBDIVISION PLAT REQUIRED
 (O.R.C. 711.001 & 711.131)
 Lot(s) not for building unless
 approved by Board of Health **HCPC**
 HOLMES CO. PLANNING COMMISSION
 By TS Date 2/24/2021

202100014066
 B: 19 P: 4326
 FILED FOR RECORD IN
 HOLMES COUNTY, OH
 ANITA HALL, COUNTY RECORDER
 03/12/2021 11:49 AM
 SMALL PLAT . 40.00
 PAGES: 1
 ORV 276 PG 1356

REFERENCES

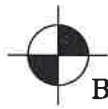
- O.R. VOL. 191 PAGE 1347
- O.R. VOL. 243 PAGE 2658
- O.R. VOL. 272 PAGE 1508
- PLAT VOL. 15 PAGE 156
- PLAT VOL. 18 PAGE 722

BASIS OF BEARINGS FROM
 OHIO STATE PLANE COORDINATE
 SYSTEM, NORTH ZONE, N.A.D. 83

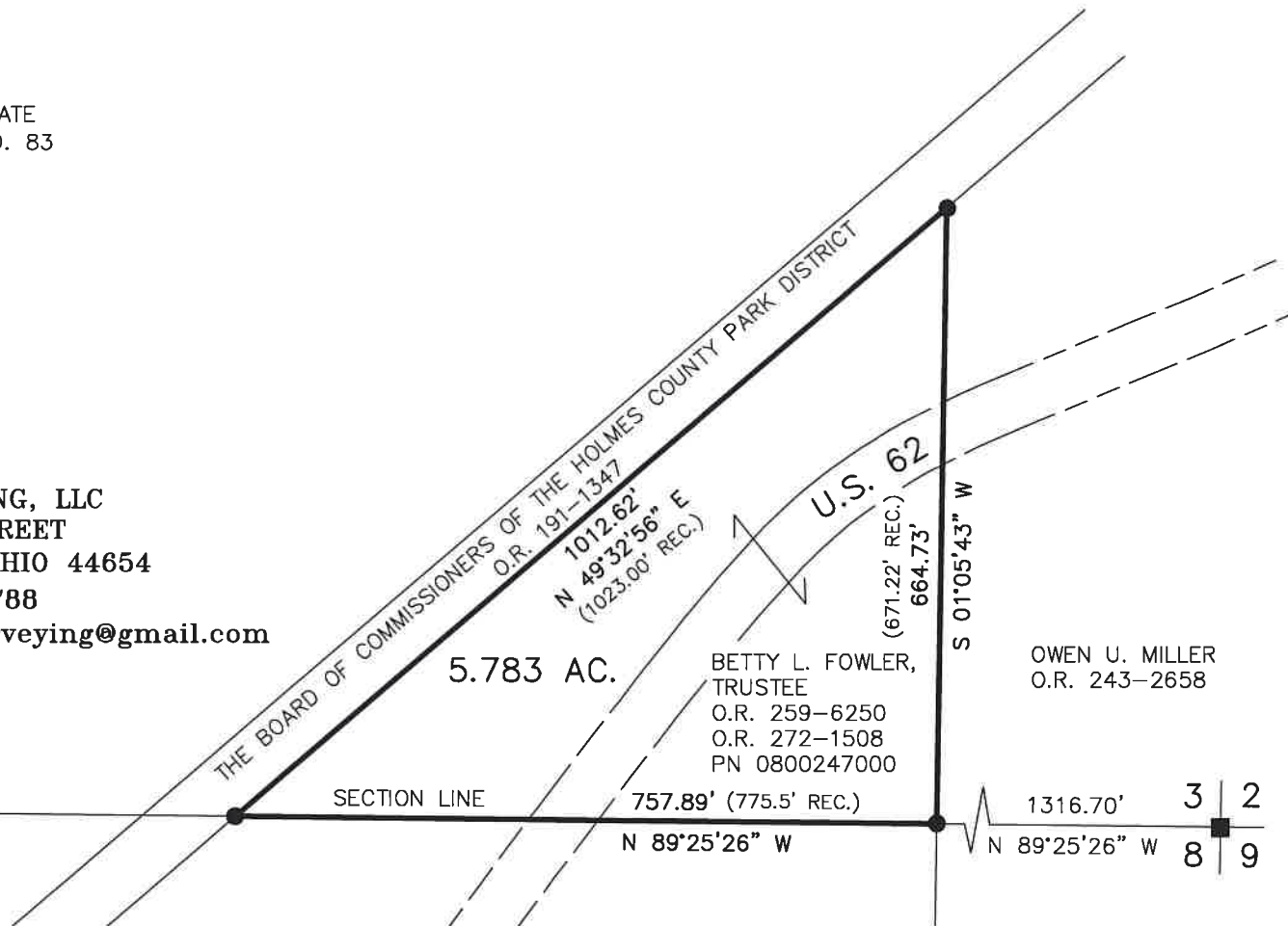
Plat Approved

Holmes County Map Office

2/24/2021 TD



BAKER SURVEYING, LLC
 138 N. CLAY STREET
 MILLERSBURG, OHIO 44654
 PH. 330-674-4788
 EMAIL: bakersurveying@gmail.com



I CERTIFY THIS SURVEY TO BE CORRECT
 TO THE BEST OF MY KNOWLEDGE.

Donald C. Baker

DONALD C. BAKER P.S. 6938

DATE: FEB. 1, 2021

KES

FILE NAME: WORK6\S-13-21\CNK

3 | 3
 8 | 8

3 | 2
 8 | 9