

Ripley Township
S.W. Qtr. Section 3
T-17 N; R-14 W
Holmes County, Ohio

SURVEYED FOR: Aaron Reusser

REFERENCES:

Deeds as shown

Plat Vol. 19 Page 867
Plat Vol. 19 Page 3135
Plat Vol. 17 Page 145

Basis of Bearing Grid North, Ohio State Plane
Coordinate System, North Zone, NAD 83

202100013750

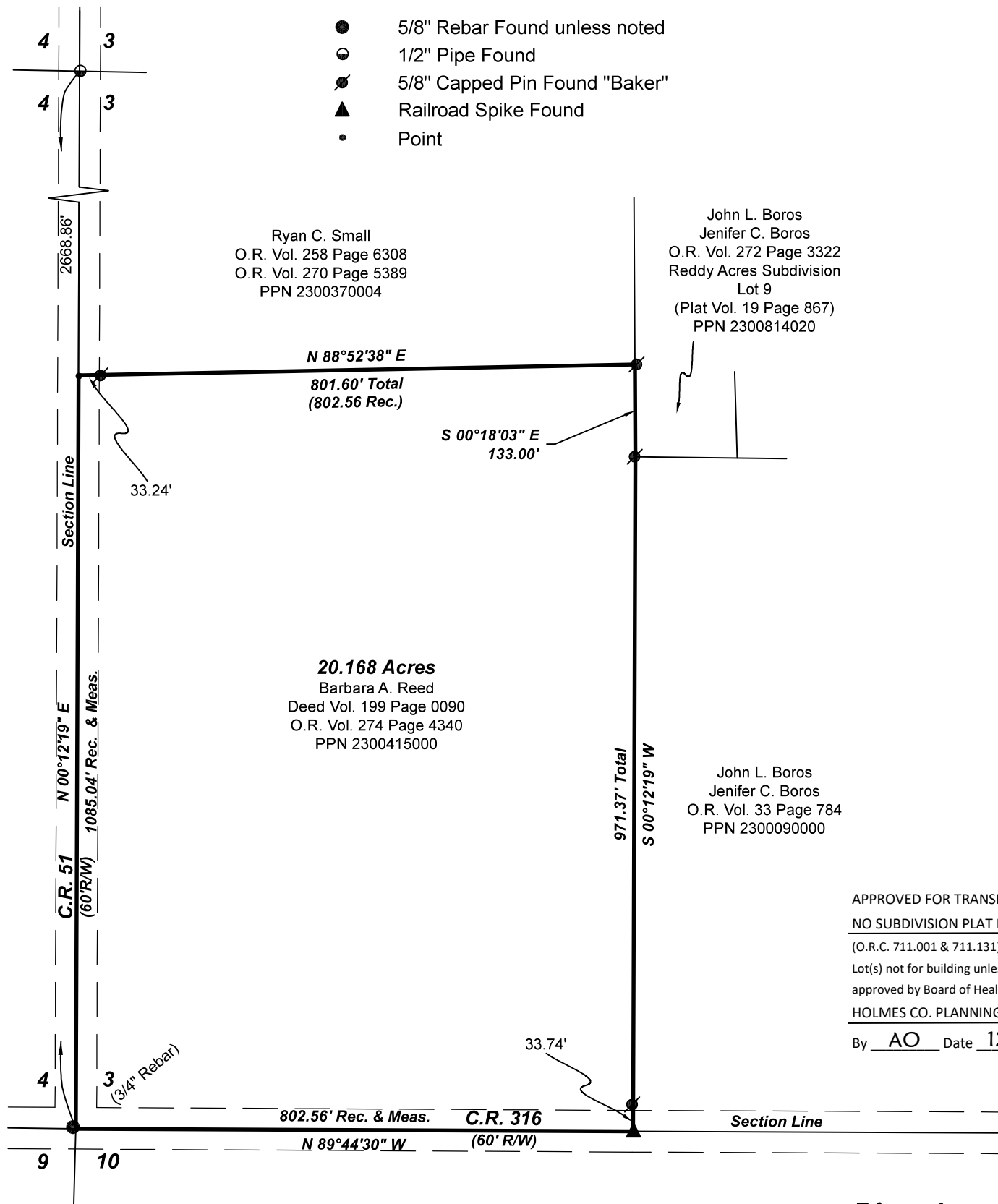
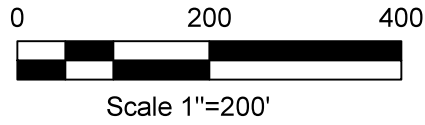
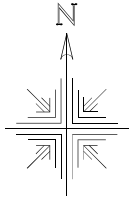
B: 19 P: 4312

FILED FOR RECORD IN
HOLMES COUNTY, OH
ANITA HALL, COUNTY RECORDER
02/23/2021 02:53 PM

SMALL PLAT . 40.00

PAGES: 1

ORV 275 P 7122



APPROVED FOR TRANSFER ONLY
NO SUBDIVISION PLAT REQUIRED
(O.R.C. 711.001 & 711.131)
Lot(s) not for building unless
approved by Board of Health
HOLMES CO. PLANNING COMMISSION
By AO Date 12/8/2020



Plat Approved

Holmes County Map Office

12/7/2020 TD



I certify this survey to be correct to the best of
my knowledge.

Caleb Galbraith

Caleb Jerome Galbraith P.S. 8703
Date: Nov. 24, 2020
Job ID: 20820-H33

Pioneer Surveying & Services, LLC.
5434 Township Road 377
Millersburg, Ohio 44654
Phone: 330-231-0497

Email: caleb@pioneersurveyingandservices.com

