

Washington Township
N.E. Qtr. Section 13
T-19 N; R-15 W
Holmes County, Ohio

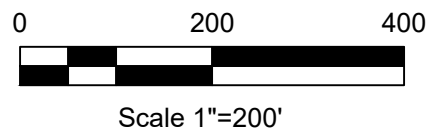
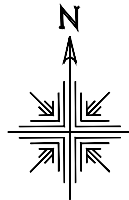
SURVEYED FOR: Steve Hottle

REFERENCES:

Deeds as shown

- Plat Vol. 9 Page 200
- Plat Vol. 19 Page 838
- Plat Vol. 19 Page 456
- Plat Vol. 18 Page 202
- Plat Vol. 19 Page 2013
- Plat Vol. 19 Page 3473
- Plat Vol. 19 Page 2464

Basis of Bearing Grid North, Ohio State Plane
Coordinate System, North Zone, NAD 83



- Stone Found
- 5/8" Rebar Found unless noted
- ⊙ 5/8" Capped Pin Found "Rudolph"
- ⊙ 5/8" Capped Pin Found "Long"
- 5/8" Capped Pin Set "Galbraith"
- ▲ Railroad Spike Found
- Point

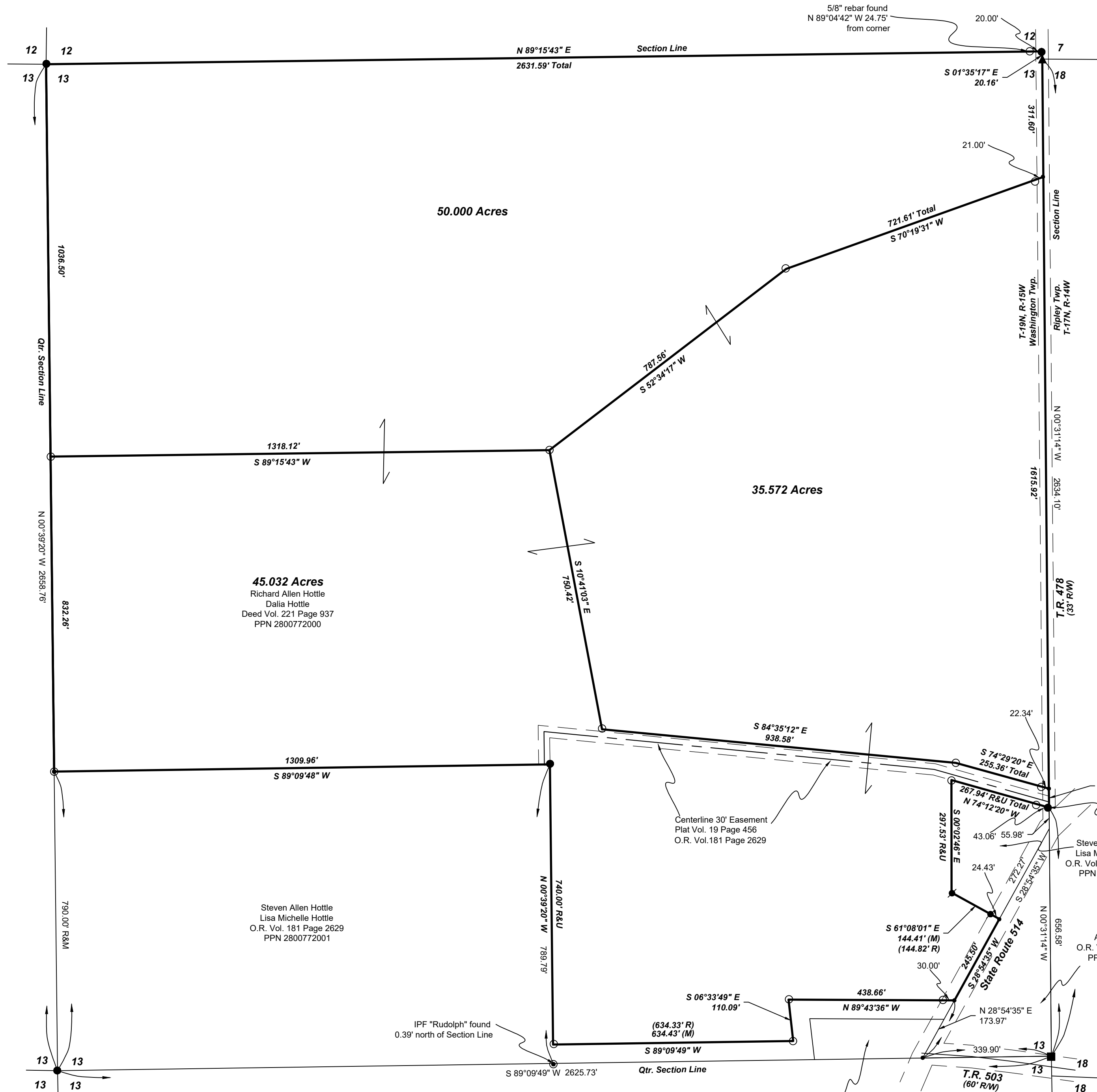


I certify this survey to be correct to the best of my knowledge.

Caleb Jerome Galbraith
Caleb Jerome Galbraith P.S. 8703
Date: Nov. 13, 2020
Job ID: 18520-H39

Pioneer Surveying & Services, LLC.
5434 Township Road 377
Millersburg, Ohio 44654
Phone: 330-231-0497

Email: caleb@pioneersurveyingandservices.com



202100013738
B: 19 P: 4311
FILED FOR RECORD IN
HOLMES COUNTY, OH
ANITA HALL, COUNTY RECORDER
02/23/2021 10:39 AM
PLAT MED . 43.20
PAGES: 1
ORV 275 P 7089
275 P 7083
275 P 7086

APPROVED FOR TRANSFER ONLY
NO SUBDIVISION PLAT REQUIRED
(O.R.C. 711.001 & 711.131)
Lot(s) not for building unless
approved by Board of Health
HOLMES CO. PLANNING COMMISSION
By AO Date 2/1/2021



Plat Approved
Holmes County Map Office
1/29/2021 Rg