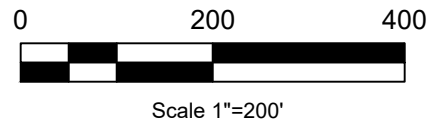
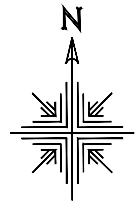


Berlin Township
3rd Qtr. Lot 24
T-9 N; R-5 W
Holmes County, Ohio

SURVEYED FOR: Roy Burkholder

202100013156
B: 19 P: 4282
FILED FOR RECORD IN
HOLMES COUNTY, OH
ANITA HALL, COUNTY RECORDER
01/26/2021 02:54 PM
PLAT MED . 43.20
PAGES: 1
ORV 275 P 4181

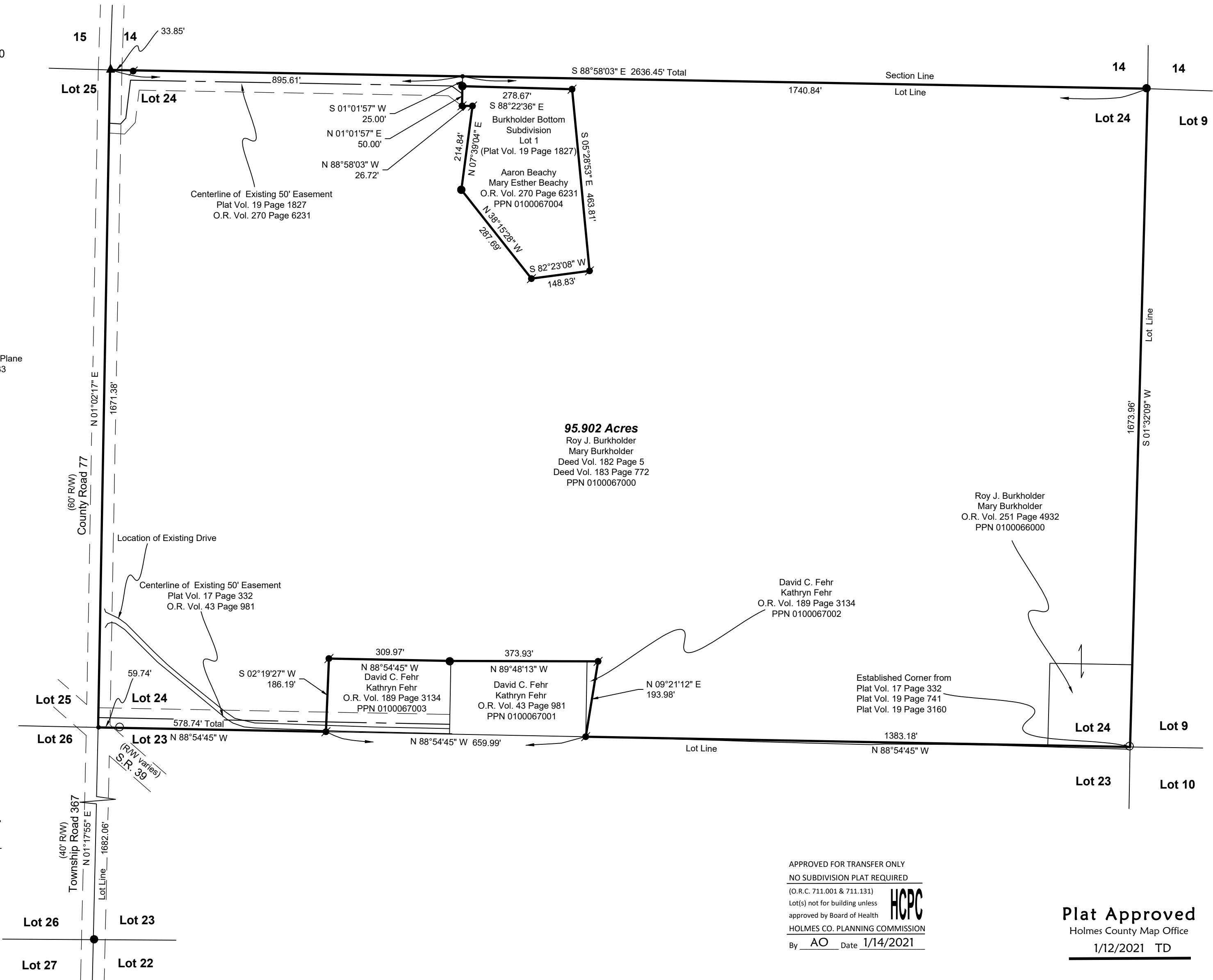


REFERENCES:
Deeds as shown

- Plat Vol. 19 Page 741
- Plat Vol. 19 Page 258
- Plat Vol. 19 Page 3160
- Plat Vol. 19 Page 1827
- Plat Vol. 19 Page 3978
- Plat Vol. 19 Page 741
- Plat Vol. 17 Page 332
- Plat Vol. 19 Page 2137
- Plat Vol. 14 Page 467
- Plat Vol. 14 Page 135
- Plat Vol. 18 Page 840
- Plat Vol. 19 Page 3690
- Plat Vol. 19 Page 1408
- Plat Vol. 14 Page 439
- Plat Vol. 18 Page 706

Basis of Bearing Grid North, Ohio State Plane
Coordinate System, North Zone, NAD 83

- 5/8" Rebar Found unless noted
- ⊙ 5/8" Capped Pin Found "Baker"
- 5/8" Capped Pin Set "Galbraith"
- ▲ Railroad Spike Found
- Point



I certify this survey to be correct to the best of my knowledge.

Caleb Jerome Galbraith P.S. 8703
Date: December 29, 2020
Job ID: 221-H13

Pioneer Surveying & Services, LLC.
5434 Township Road 377
Millersburg, Ohio 44654
Phone: 330-231-0497
Email: caleb@pioneersurveyingandservices.com

APPROVED FOR TRANSFER ONLY
NO SUBDIVISION PLAT REQUIRED
(O.R.C. 711.001 & 711.131)
Lot(s) not for building unless
approved by Board of Health
HOLMES CO. PLANNING COMMISSION
By AO Date 1/14/2021



Plat Approved
Holmes County Map Office
1/12/2021 TD

