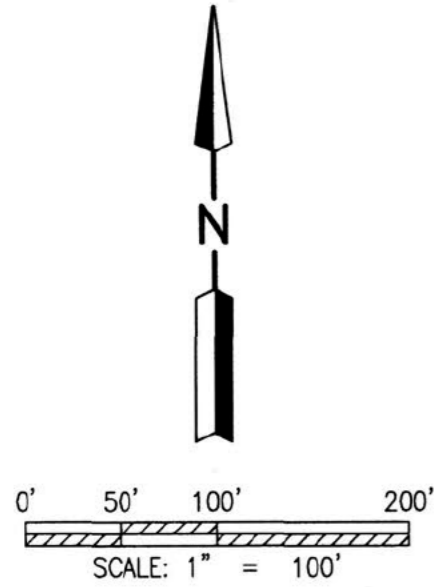


202100012827
 B: 19 P: 4271
 FILED FOR RECORD IN
 HOLMES COUNTY, OH
 ANITA HALL, COUNTY RECORDER
 01/07/2021 10:34 AM
 SMALL PLAT . 40.00
 PAGES: 1
 ORV 275 P 2301

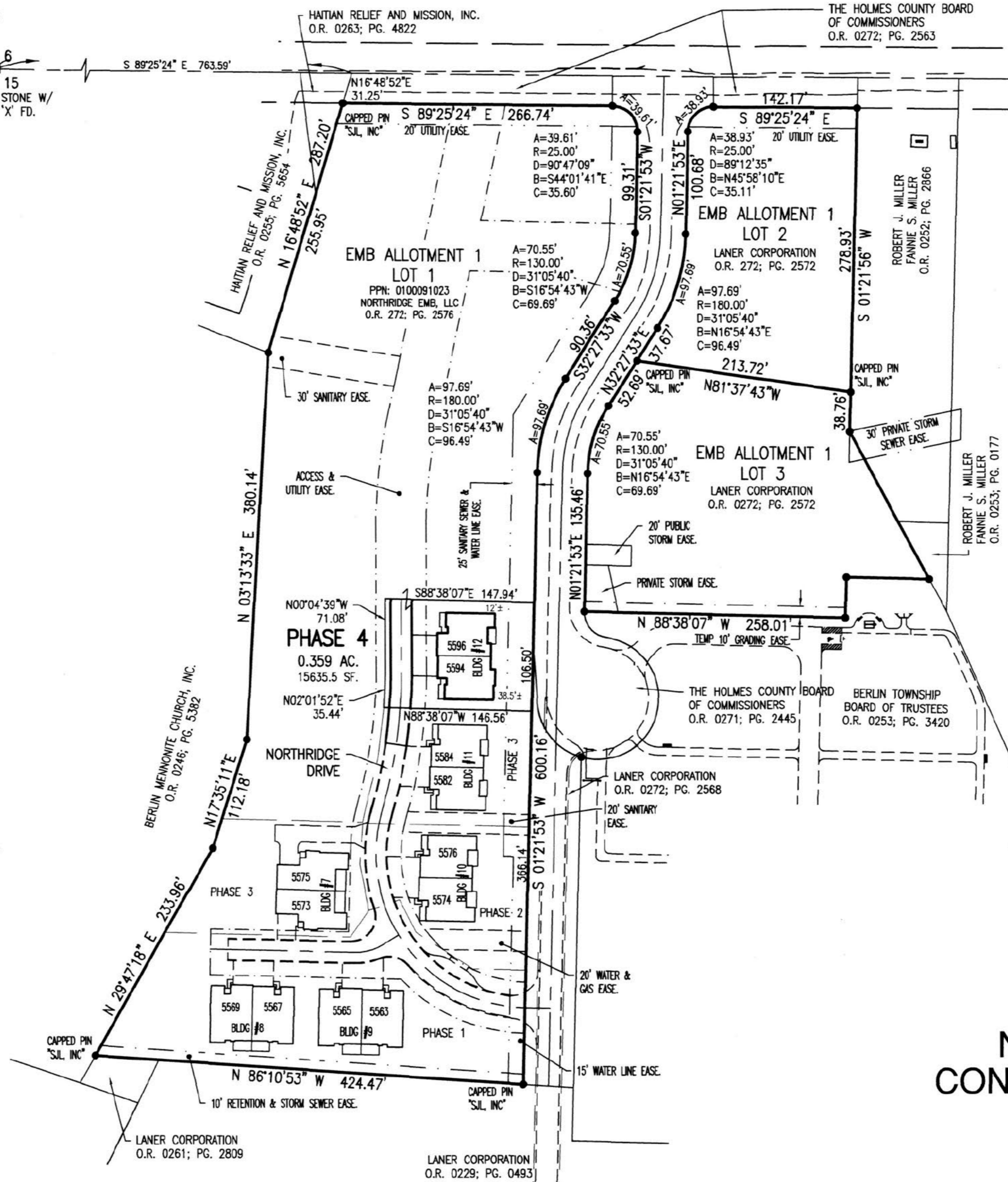
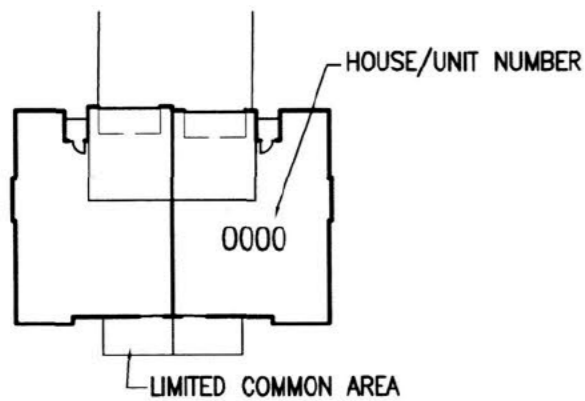


REFERENCE SURVEY:
 O.R. VOL. 229; PG. 493
 PLAT VOL. 19; PG. 1925
 PLAT VOL. 19; PG. 2344

BASIS OF BEARING:
 The bearings as shown
 hereon are relative to GRID
 NORTH of the OHIO STATE
 PLANE COORDINATE SYSTEM,
 NAD 83 DATUM

- STONE FOUND
- × SPIKE FOUND
- CAPPED PIN FD.
MARKED BAKER
(UNLESS NOTED)

- PARCEL 6.794 AC.
 - PHASE 1 1.170 AC.
 - PHASE 2 1.264 AC.
 - PHASE 3 0.831 AC.
 - PHASE 4 0.359 AC.
 RESIDUE 3.170 AC.



**NORTHRIDGE EMB
 CONDOMINIUMS, PHASE 4**
 PART OF LOT 1
 EMB ALLOTMENT 1
 PLAT VOL. 19; PG. 4076
 BERLIN TOWNSHIP
 N.E. QTR. SEC. 15
 T-9N ; R-5W
 HOLMES COUNTY, OHIO

LEGEND

UNIT	LIVING	BASEM'T	GARAGE	PORCH	DECK	PATIO	TOTALS
5594	1644 SF.	-----	509 SF.	120 SF.	-----	128 SF.	2401 SF.
5596	1519 SF.	-----	531 SF.	120 SF.	126 SF.	117 SF.	2413 SF.

**SHAFFER, JOHNSTON, LICHTENWALTER
 & ASSOCIATES, INC.**
 Consulting Engineers & Surveyors
 3477 Commerce Parkway, Suite C
 Wooster, Ohio 44691
 TEL (330) 345-6377 FAX (330) 345-6725 EMAIL sjl@sjl-hnc.com

DRAWN C. Falb	CHECKED	1" SCALE = 100'	DATE 11/18/20
DWG NO: EW-2419EA-COND04		JOB NO: EW-2419EA	
			SHEET 2 OF 3