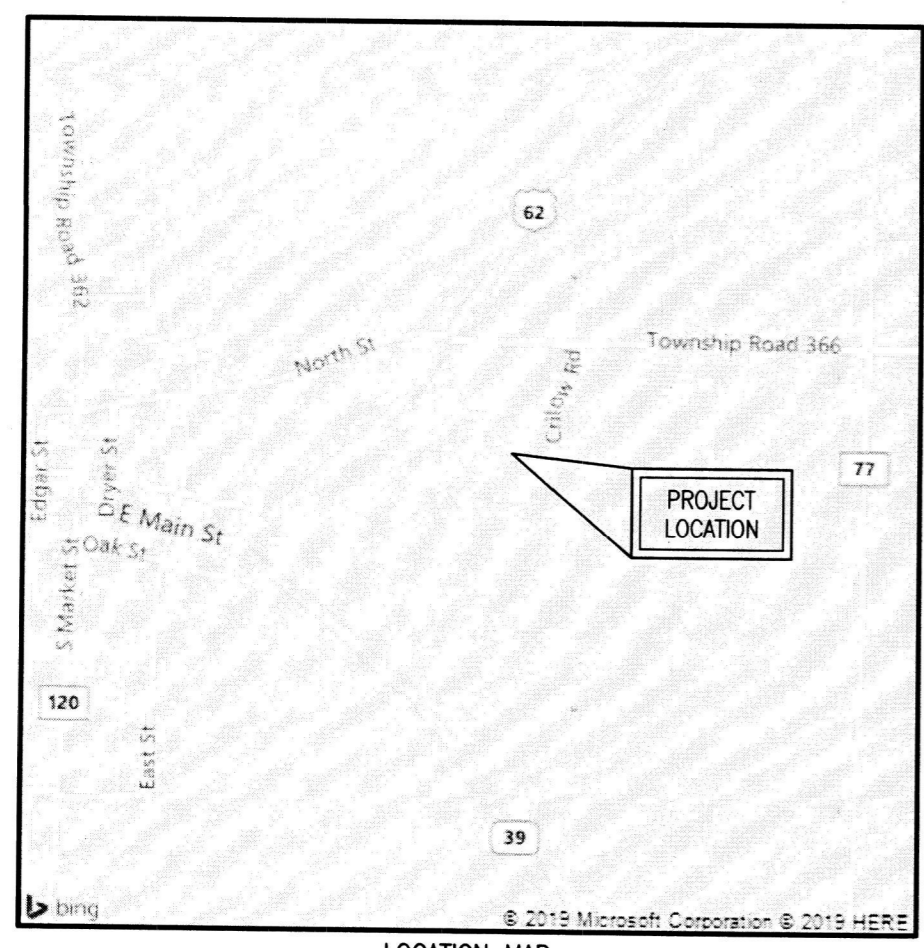
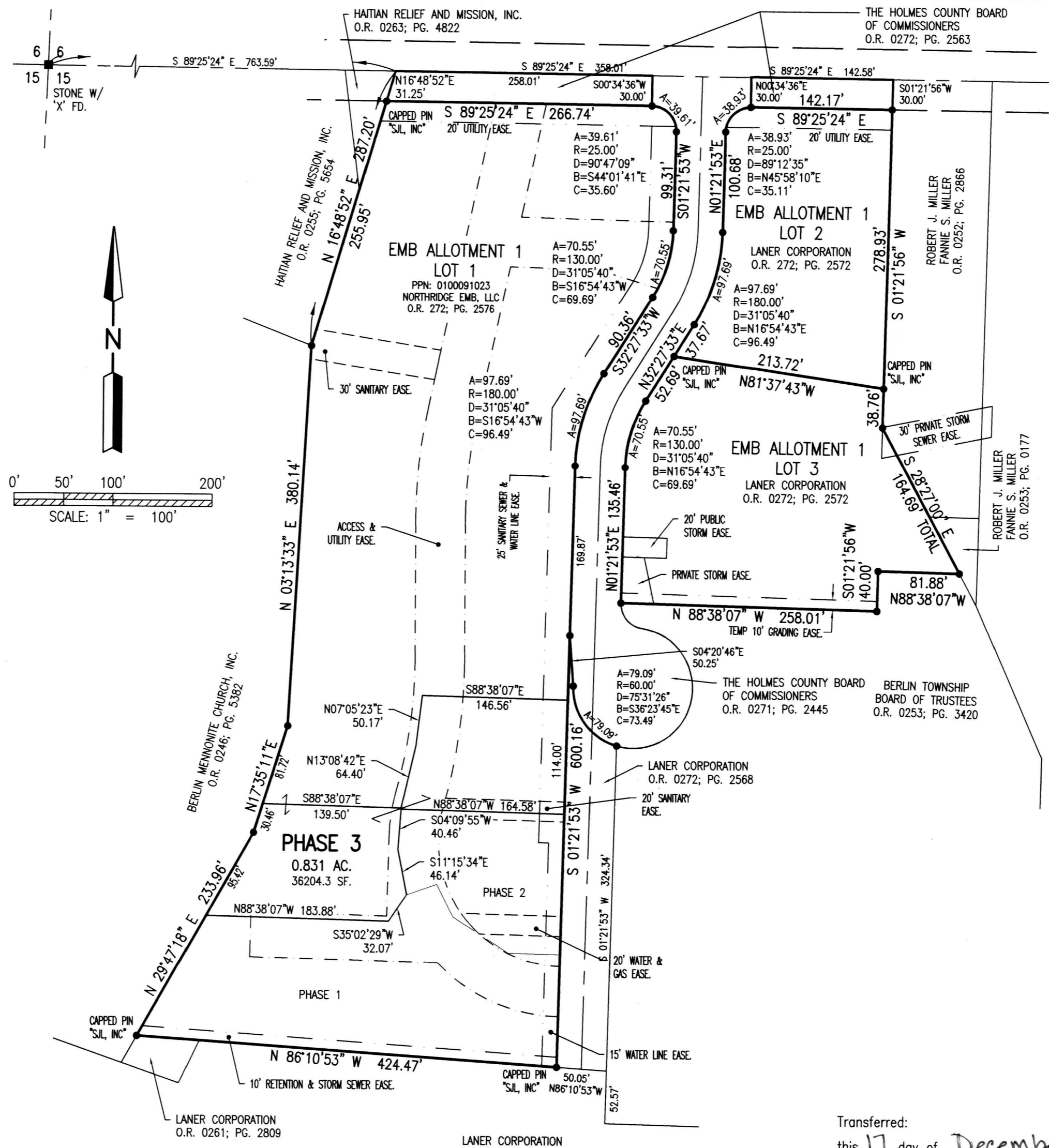


ORV 275P55W



LOCATION MAP



- STONE FOUND
- ✕ SPIKE FOUND
- CAPPED PIN FD. MARKED BAKER (UNLESS NOTED)

REFERENCE SURVEY:
 O.R. VOL. 229; PG. 493
 PLAT VOL. 19; PG. 1925
 PLAT VOL. 19; PG. 2344

BASIS OF BEARING:
 The bearings as shown hereon are relative to GRID NORTH of the OHIO STATE PLANE COORDINATE SYSTEM, NAD 83 DATUM

ENGINEER'S OR ARCHITECT'S DECLARATION: I declare that this plan shows graphically, insofar as possible, the layout and dimensions of units and of the buildings.



John A. Long
 John A. Long, P.E. 67239
 11/16/20
 Date

SURVEYOR'S DECLARATION: I declare that this plan was prepared from an actual survey. That the same shows graphically, insofar as possible, the location of the boundaries, the layout, location and dimensions of units and of the buildings, the location and layout of limited common areas and facilities, the location and layout of common areas and facilities, and the location of appurtenant easements, if any.



Mark E. Purdy
 Mark E. Purdy, P.S. 7307
 11-16-20
 Date

NORTHRIDGE EMB CONDOMINIUMS, PHASE 3
 PART OF LOT 1
 EMB ALLOTMENT 1
 PLAT VOL. 19; PG. 4076
 BERLIN TOWNSHIP
 N.E. QTR. SEC. 15
 T-9N ; R-5W
 HOLMES COUNTY, OHIO

Transferred:
 this 17 day of December, 2020
 Jackie McKee
 Holmes County Auditor's Office JW

Filed for record:
 this ___ day of _____, 20___
 # _____ in Volume _____, Page _____.
 Holmes County Recorder's Office

SHAFER, JOHNSTON, LICHTENWALTER & ASSOCIATES, INC.
 Consulting Engineers & Surveyors
 3477 Commerce Parkway, Suite C
 Wooster, Ohio 44691
 TEL (330) 345-6377 FAX (330) 345-6725 EMAIL sjl@sj-inc.com

DRAWN C. Faltb	CHECKED	1" SCALE = 100'	DATE 11/03/20
DWG NO: EW-2419EA-COND03		JOB NO: EW-2419EA	SHEET 1 OF 4