

REFERENCES:

Deeds as shown

- Plat Vol. 12 Page 701
- Plat Vol. 10 Page 691
- Plat Vol. 5 Page 95
- Plat Vol. 2 Page 83

Mechanic Township  
 S.E. Qtr. Section 1  
 T-8 N; R-7 W  
 Holmes County, Ohio

SURVEYED FOR: Ben Crab

202000011422  
 B: 19 P: 4199  
 FILED FOR RECORD IN  
 HOLMES COUNTY, OH  
 ANITA HALL, COUNTY RECORDER  
 10/26/2020 11:39 AM  
 SMALL PLAT . 40.00  
 PAGES: 1

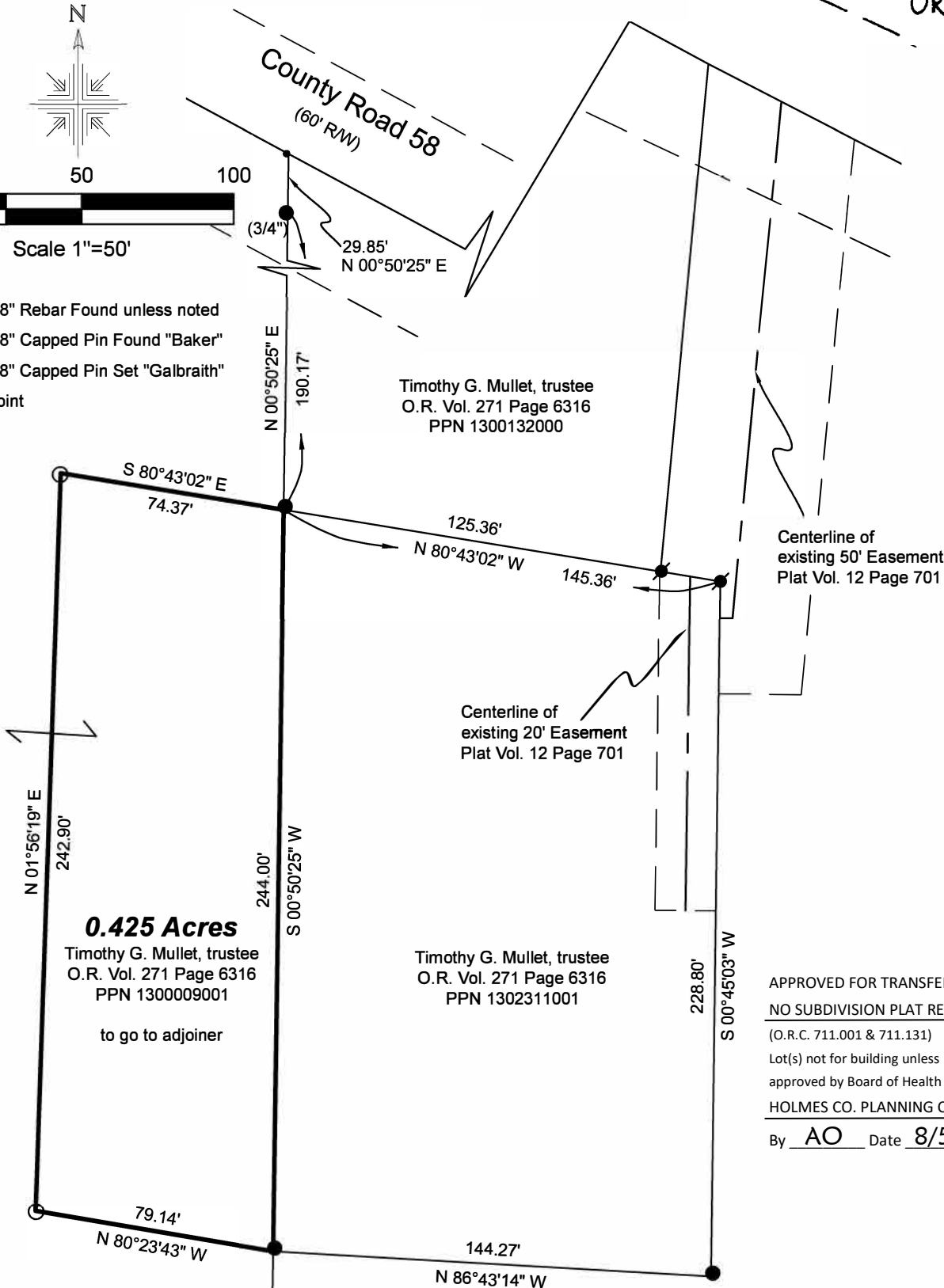
ORV 274 PG 2489

Basis of Bearing from Plat Vol. 12 Page 701



Scale 1"=50'

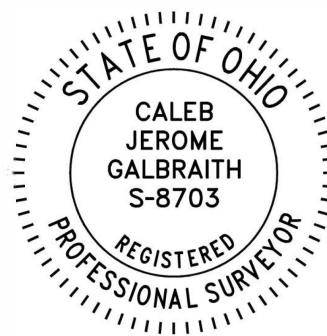
- 5/8" Rebar Found unless noted
- 5/8" Capped Pin Found "Baker"
- 5/8" Capped Pin Set "Galbraith"
- Point



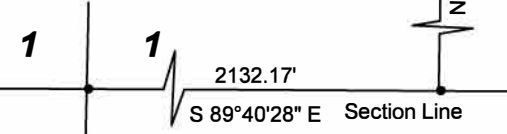
**0.425 Acres**  
 Timothy G. Mullet, trustee  
 O.R. Vol. 271 Page 6316  
 PPN 1300009001  
 to go to adjoiner

Timothy G. Mullet, trustee  
 O.R. Vol. 271 Page 6316  
 PPN 1302311001

APPROVED FOR TRANSFER ONLY  
 NO SUBDIVISION PLAT REQUIRED  
 (O.R.C. 711.001 & 711.131)  
 Lot(s) not for building unless  
 approved by Board of Health  
 HOLMES CO. PLANNING COMMISSION  
 By AO Date 8/5/2020



**Plat Approved**  
 Holmes County Map Office  
 8/4/2020 BH



Pioneer Surveying & Services, LLC.  
 5434 Township Road 377  
 Millersburg, Ohio 44654  
 Phone: 330-231-0497  
 Email: caleb@pioneersurveyingandservices.com

I certify this survey to be correct to the best of my knowledge.



Caleb Jerome Galbraith  
 Date: June 13, 2020  
 Job ID: 8820-H23

P.S. 8703