

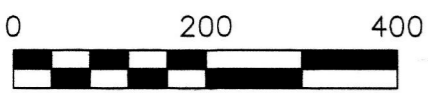
WALNUT CREEK TOWNSHIP  
 N.E. & S.E. QTRS. SECTION 18  
 3RD. QTR., LOTS 5 & 6  
 T-9 N; R-5 W  
 HOLMES COUNTY, OHIO

SURVEYED FOR: TEKTON ENGINEERING

REFERENCES

DEED VOL. 189 PAGE 513	PLAT VOL. 3 PAGE 50B
DEED VOL. 202 PAGE 428	PLAT VOL. 5 PAGE 30
DEED VOL. 220 PAGE 25	PLAT VOL. 7 PAGE 378
DEED VOL. 266 PAGE 73	PLAT VOL. 7 PAGE 472
O.R. VOL. 50 PAGE 453	PLAT VOL. 8 PAGE 230
O.R. VOL. 50 PAGE 457	PLAT VOL. 8 PAGE 810
O.R. VOL. 161 PAGE 369	PLAT VOL. 10 PAGE 442
O.R. VOL. 206 PAGE 3047	PLAT VOL. 12 PAGE 281
O.R. VOL. 23 PAGE 472	PLAT VOL. 12 PAGE 633
O.R. VOL. 247 PAGE 1933	PLAT VOL. 17 PAGE 576
O.R. VOL. 262 PAGE 6589	PLAT VOL. 18 PAGE 263
O.R. VOL. 212 PAGE 3124	PLAT VOL. 18 PAGE 434
O.R. VOL. 214 PAGE 3122	PLAT VOL. 19 PAGE 421
O.R. VOL. 182 PAGE 1529	PLAT VOL. 19 PAGE 1386
O.R. VOL. 185 PAGE 2848	PLAT VOL. 19 PAGE 2382
O.R. VOL. 240 PAGE 1464	PLAT VOL. 19 PAGE 3382
O.R. VOL. 264 PAGE 7465	PLAT VOL. 19 PAGE 3550

BASIS OF BEARINGS FROM OHIO STATE PLANE  
 COORDINATE SYSTEM, NORTH ZONE, N.A.D. 83



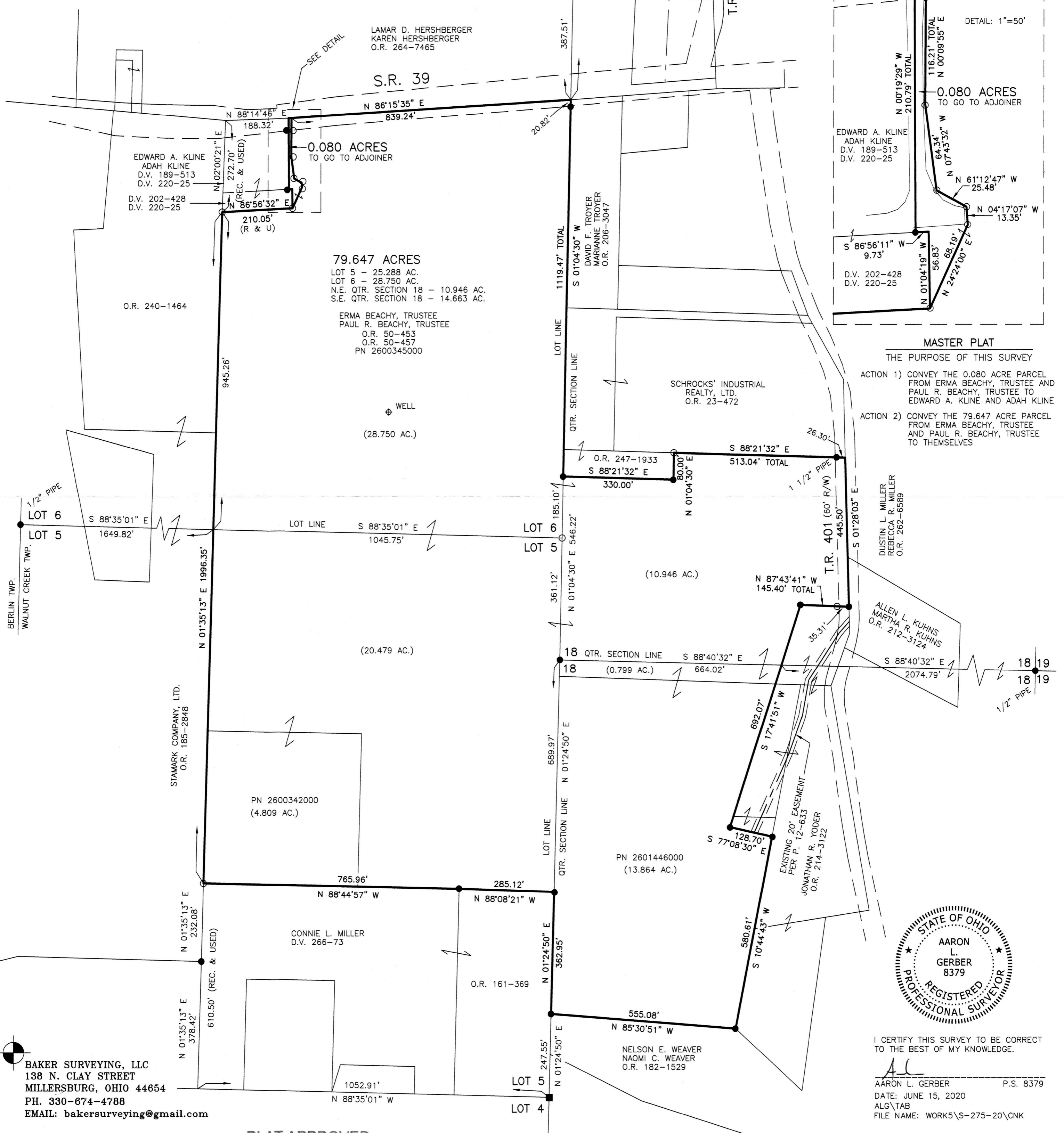
SCALE: 1"=200'

- STONE FOUND
- 5/8" REBAR FOUND UNLESS OTHERWISE NOTED
- 5/8" REBAR SET WITH I.D. CAP I.D. CAP MARKED "BAKER SURVEYING LLC"

202000010609

B: 19 P: 4166  
 FILED FOR RECORD IN  
 HOLMES COUNTY, OH  
 ANITA HALL, COUNTY RECORDER  
 09/11/2020 10:49 AM  
 PLAT MED - 43.20  
 PAGES: 1

ORV 273 Pgs 5709  
 5713



MASTER PLAT

THE PURPOSE OF THIS SURVEY

- ACTION 1) CONVEY THE 0.080 ACRE PARCEL FROM ERMA BEACHY, TRUSTEE AND PAUL R. BEACHY, TRUSTEE TO EDWARD A. KLINE AND ADAH KLINE
- ACTION 2) CONVEY THE 79.647 ACRE PARCEL FROM ERMA BEACHY, TRUSTEE AND PAUL R. BEACHY, TRUSTEE TO THEMSELVES



I CERTIFY THIS SURVEY TO BE CORRECT TO THE BEST OF MY KNOWLEDGE.

Aaron L. Gerber P.S. 8379  
 DATE: JUNE 15, 2020  
 FILE NAME: WORK5\S-275-20\CNK

PLAT APPROVED

7/19/2020 JP

202000010609

B: 19 P: 4166  
 FILED FOR RECORD IN  
 HOLMES COUNTY, OH  
 ANITA HALL, COUNTY RECORDER  
 09/11/2020 10:49 AM  
 PLAT MED - 43.20  
 PAGES: 1

ORV 273 Pgs 5709, 5713