

PLAT OF CORRECTION  
CORRECTING EASEMENT REFERENCE

202000010043  
B: 19 P: 4141  
FILED FOR RECORD IN  
HOLMES COUNTY, OH  
ANITA HALL, COUNTY RECORDER  
08/13/2020 10:34 AM  
SMALL PLAT . 40.00  
PAGES: 1

ORV 273 PG 2645

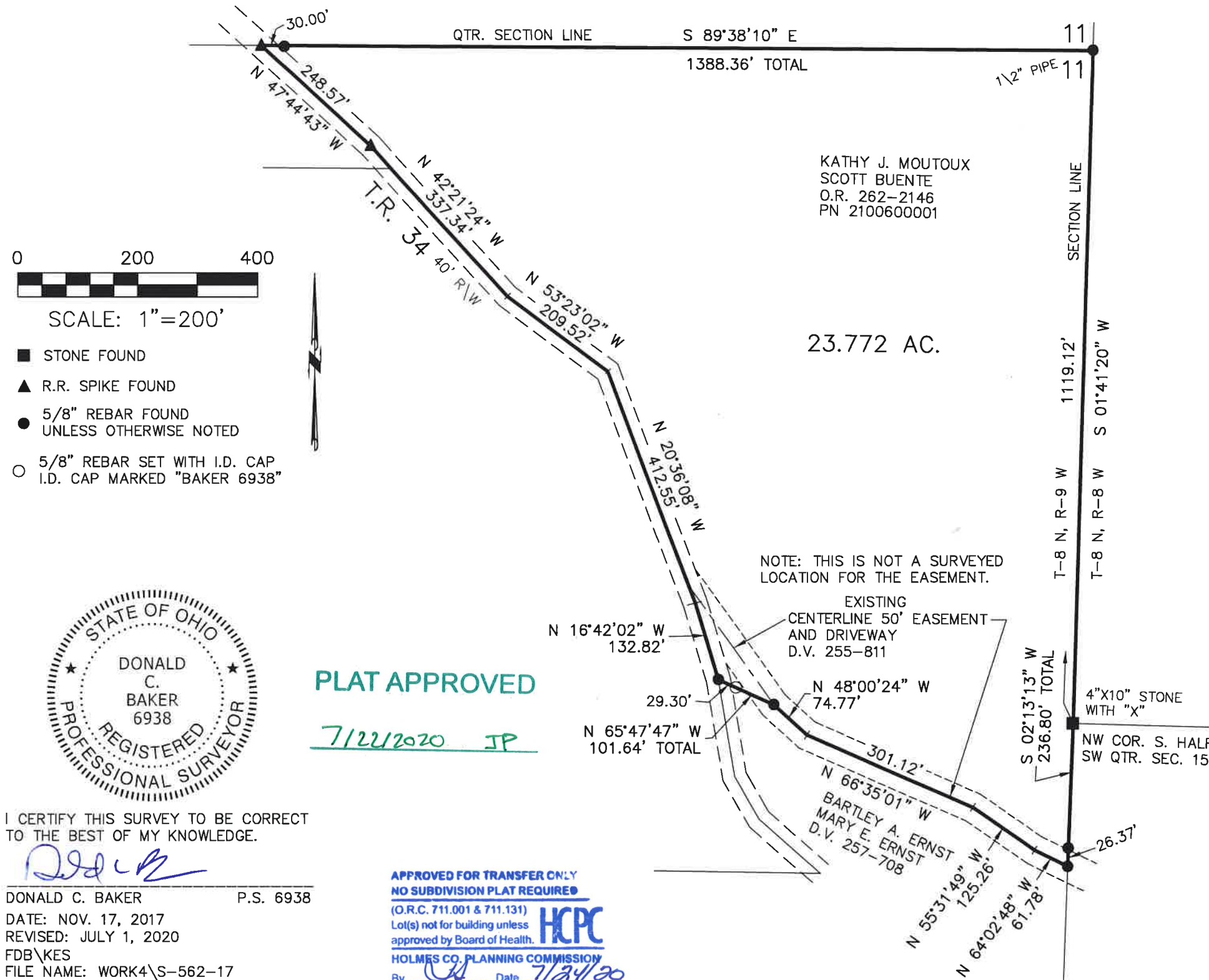
RICHLAND TOWNSHIP  
S.E. QTR. SECTION 11  
T-8 N; R-9 W  
HOLMES COUNTY, OHIO

SURVEYED FOR: KATHY MOUTOUX

REFERENCES

DEED VOL. 257 PAGE 708  
DEED VOL. 277 PAGE 225  
O.R. VOL. 229 PAGE 2123  
PLAT VOL. 9 PAGE 223  
PLAT VOL. 9 PAGE 41  
PLAT VOL. 10 PAGE 197  
PLAT VOL. 10 PAGE 210  
PLAT VOL. 13 PAGE 62  
PLAT VOL. 18 PAGE 502  
PLAT VOL. 19 PAGE 1692

BEARINGS FROM  
PLAT VOL. 18 PAGE 502



SCALE: 1"=200'

- STONE FOUND
- ▲ R.R. SPIKE FOUND
- 5/8" REBAR FOUND UNLESS OTHERWISE NOTED
- 5/8" REBAR SET WITH I.D. CAP I.D. CAP MARKED "BAKER 6938"



PLAT APPROVED

7/22/2020 JP

I CERTIFY THIS SURVEY TO BE CORRECT TO THE BEST OF MY KNOWLEDGE.

*Donald C. Baker*  
DONALD C. BAKER P.S. 6938

DATE: NOV. 17, 2017  
REVISED: JULY 1, 2020  
FDB\KES  
FILE NAME: WORK4\S-562-17

APPROVED FOR TRANSFER ONLY  
NO SUBDIVISION PLAT REQUIRED  
(O.R.C. 711.001 & 711.131)  
Lot(s) not for building unless approved by Board of Health.  
HCP  
HOLMES CO. PLANNING COMMISSION  
By *[Signature]* Date 7/24/20



BAKER SURVEYING, LLC  
138 N. CLAY STREET  
MILLERSBURG, OHIO 44654  
PH. 330-674-4788  
FAX 330-674-6027