

HCPC

(O.R.C. 711.001 and 711.131)
 Lot(s) not for building unless
 approved by Board of Health.

HOLMES CO. PLANNING COMMISSION
 By TS Date 7/28/2020

ORIGINAL PLAT FILED WITH MAP OFFICE
 ANITA HALL, RECORDER

20200009749

B: 19 P: 4129
 FILED FOR RECORD IN
 HOLMES COUNTY, OH
 ANITA HALL, COUNTY RECORDER
 07/29/2020 08:38 AM
 SMALL PLAT . 40.00
 PAGES: 1

OKV 273 Pg 1224

Salt Creek Township
 N.E. Qtr. Section 2
 T-14 N; R-12W
 Holmes County, Ohio

SURVEYED FOR: Mose Hershberger

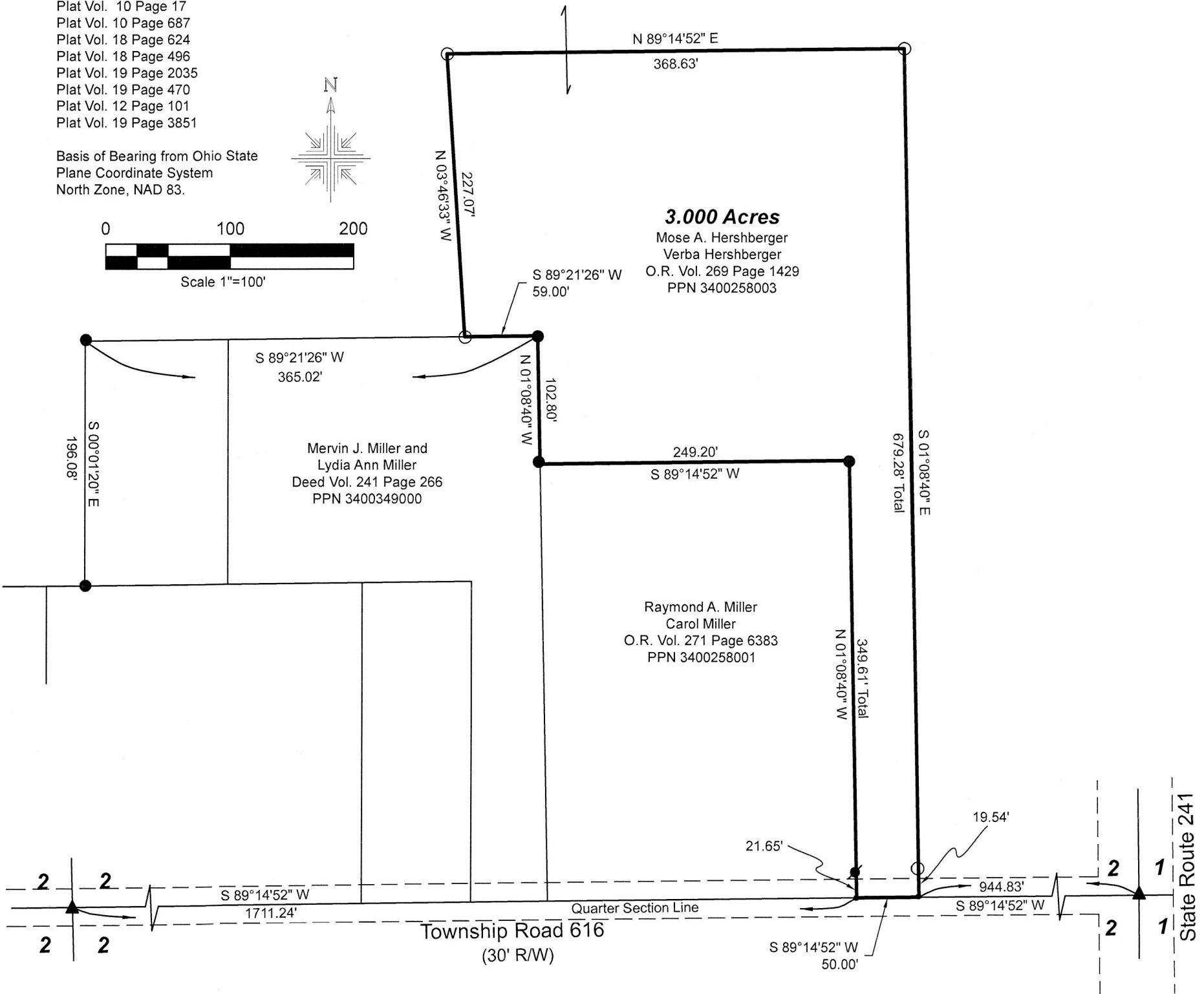
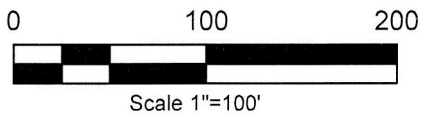
- Stone Found
- 5/8" Rebar Found unless noted
- 5/8" Capped Pin Found "Baker"
- ▼ 3/4" Rebar Found
- 5/8" Capped Pin Set "Galbraith"
- ▲ R.R. Spk. Found
- Point

REFERENCES:

Deeds as shown

- Plat Vol. 3 Page 38B
- Plat Vol. 7 Page 552
- Plat Vol. 10 Page 17
- Plat Vol. 10 Page 687
- Plat Vol. 18 Page 624
- Plat Vol. 18 Page 496
- Plat Vol. 19 Page 2035
- Plat Vol. 19 Page 470
- Plat Vol. 12 Page 101
- Plat Vol. 19 Page 3851

Basis of Bearing from Ohio State
 Plane Coordinate System
 North Zone, NAD 83.



I certify this survey to be correct to the best of
 my knowledge.

Caleb Jerome Galbraith

Caleb Jerome Galbraith P.S. 8703
 Date: June 10, 2020
 Job ID: 8620-H35
 Pioneer Surveying & Services, LLC.
 5434 Township Road 377
 Millersburg, Ohio 44654
 Phone: 330-276-0220
 Email: caleb@pioneersurveyingandservices.com



APPROVED FOR TRANSFER ONLY
 NO SUBDIVISION PLAT REQUIRED

(O.R.C. 711.001 & 711.131)

Lot(s) not for building unless
 approved by Board of Health

HCPC

HOLMES CO. PLANNING COMMISSION

By AO Date 7/15/2020



Plat Approved
 7/10/2020 BH