

ORV 272 PG 399

REFERENCES:

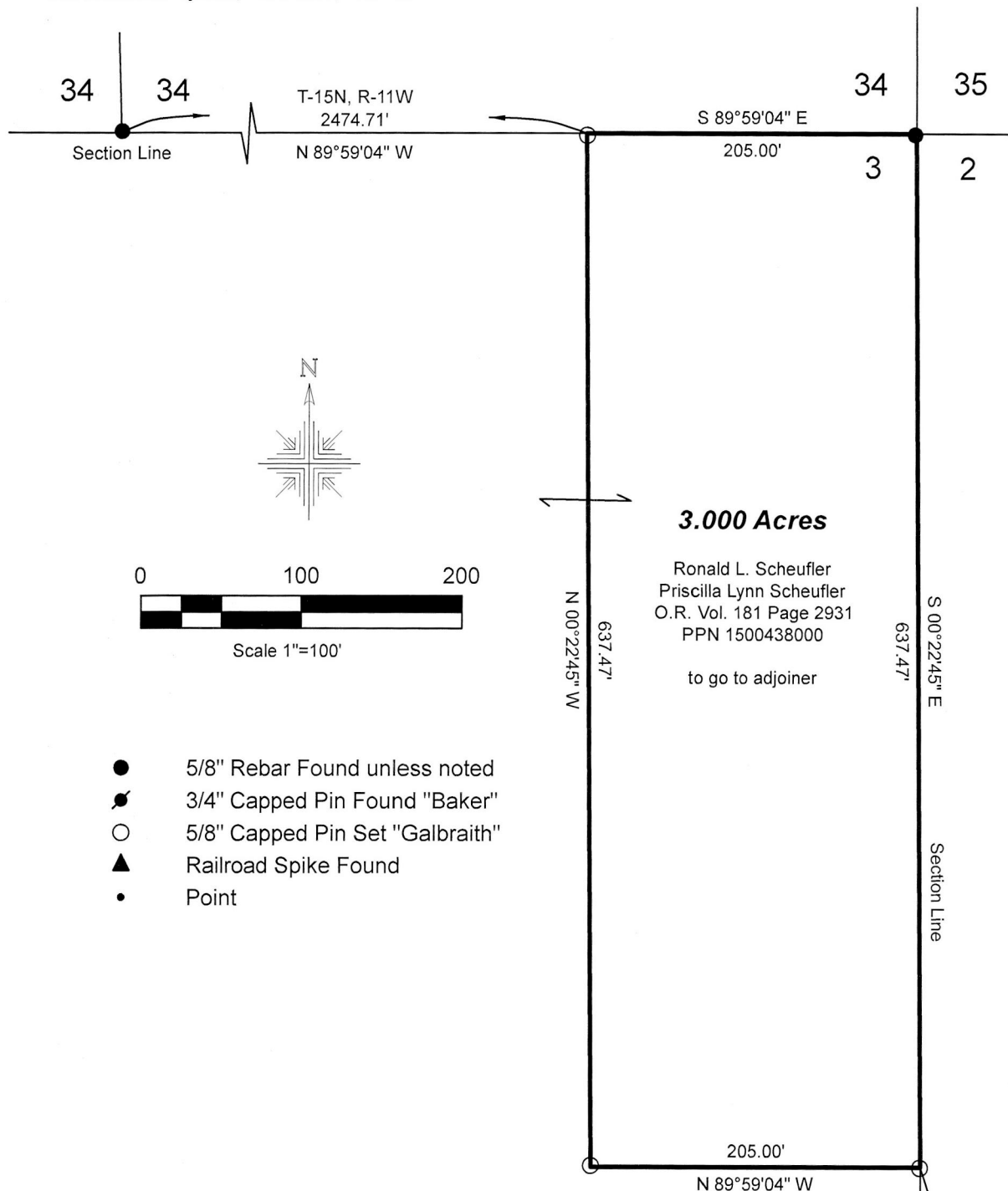
Deeds as shown

- Plat Vol. 19 Page 1754
- Plat Vol. 19 Page 1852
- Plat Vol. 19 Page 3640
- Plat Vol. 02 Page 400
- Plat Vol. 02 Page 540

Basis of Bearing from Grid North, Ohio State
Plane Coordinate System, North Zone, NAD 83.

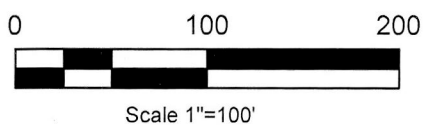
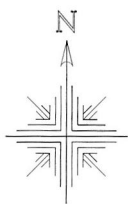
Paint Township
N.E. Qtr. Fractional Sec. 3
T-14 N; R-11 W
Holmes County, Ohio

SURVEYED FOR: Winesburg Area Development Corp.



APPROVED FOR TRANSFER ONLY
NO SUBDIVISION PLAT REQUIRED
(O.R.C. 711.001 & 711.131)
Lots not for building unless
approved by Board of Health
HCP
HOLMES CO PLANNING COMMISSION

ARO 05-04-2020



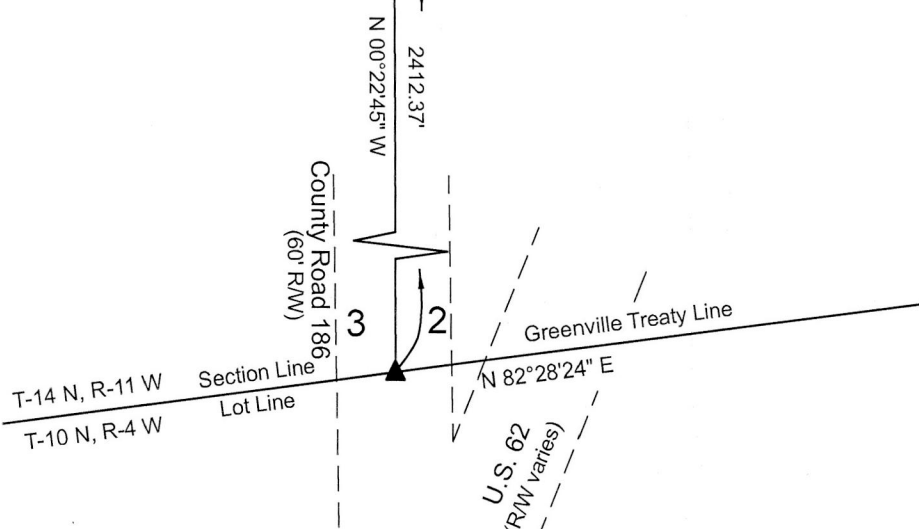
- 5/8" Rebar Found unless noted
- 3/4" Capped Pin Found "Baker"
- 5/8" Capped Pin Set "Galbraith"
- ▲ Railroad Spike Found
- Point



I certify this survey to be correct to the best of my knowledge.

Caleb Galbraith

Caleb Jerome Galbraith P.S. 8703
Date: April 12, 2020
Job ID: 4120 H-27



Pioneer Surveying & Services, LLC.
5434 Township Road 377
Millersburg, Ohio 44654
Phone: 330-231-0497

Email: caleb@pioneersurveyingandservices.com

Plat Approved
4/29/2020 JP

