

Clark Township
N.W. Qtr. Section 5
T-8 N; R-5 W

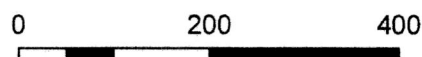
Mechanic Township
N.E. Qtr. Section 1
T-8 N; R-6 W

Holmes County, Ohio

SURVEYED FOR: John Miller

REFERENCES:

- Deeds as shown
- Plat Vol. 19 Page 1226
 - Plat Vol. 11 Page 165
 - Plat Vol. 18 Page 770
 - Plat Vol. 12 Page 313
 - Plat Vol. 18 Page 309
 - Plat Vol. 19 Page 2149
 - Plat Vol. 11 Page 164
 - Plat Vol. 17 Page 600
 - Plat Vol. 14 Page 115
 - Plat Vol. 2 Page 524
 - Plat Vol. 19 Page 743
 - Plat Vol. 12 Page 69
 - Plat Vol. 14 Page 633
 - Plat Vol. 10 Page 774
 - Plat Vol. 18 Page 967
 - Plat Vol. 14 Page 281
 - Plat Vol. 16 Page 966
 - Plat Vol. 12 Page 426



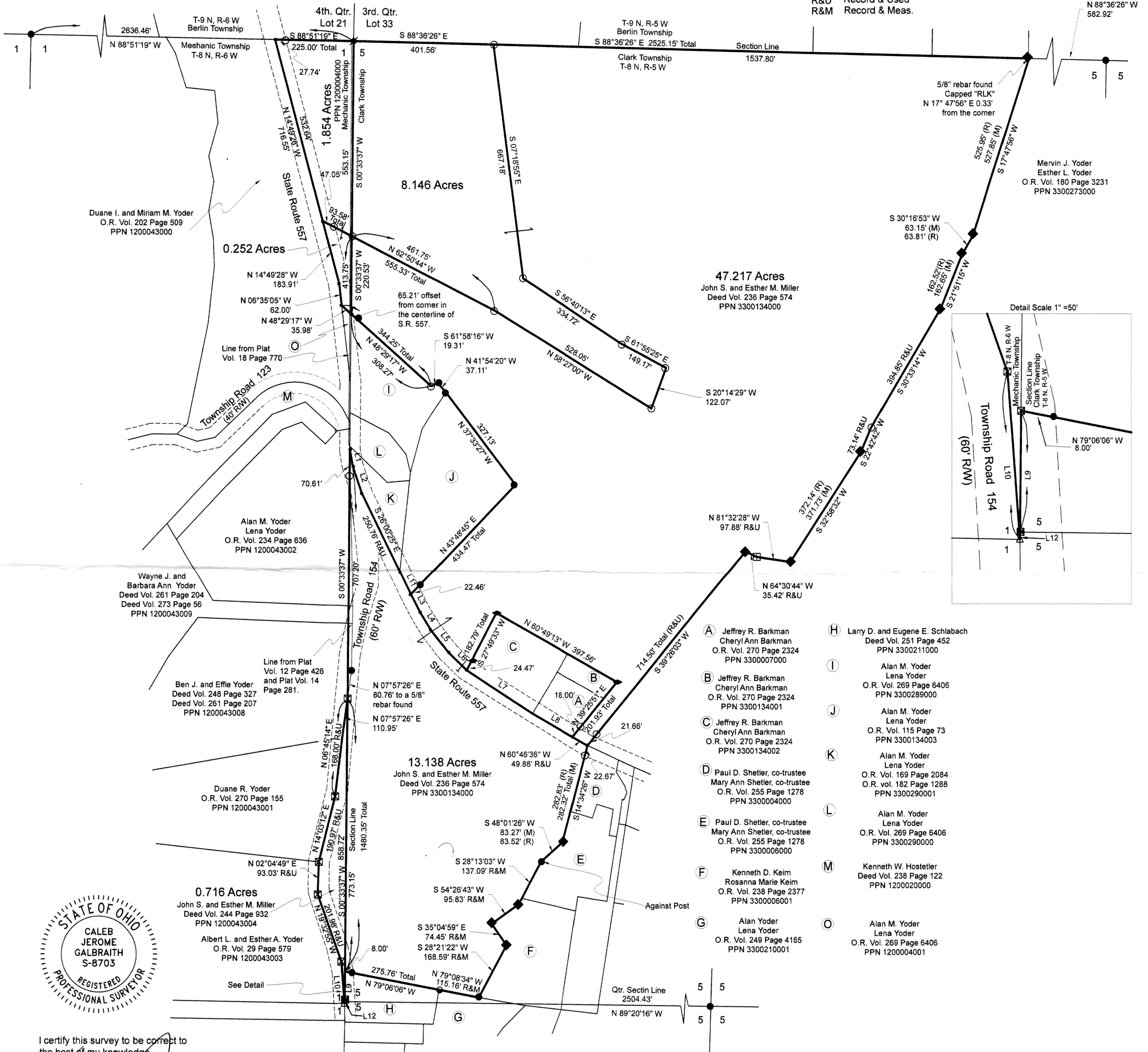
Scale 1"=200'

LINE	BEARING	DISTANCE
L1	S 10°17'18" E	47.93'
L2	S 18°50'56" E	80.03'
L3	S 27°30'52" E	58.20'
L4	S 31°41'18" E	60.19'
L5	S 38°05'59" E	78.76'
L6	S 46°23'45" E	72.64'
L7	S 57°16'36" E	223.12'
L8	S 59°53'41" E	134.63'
L9	S 00°33'37" W	85.57'
L10	N 04°14'20" W	118.87'
L11	S 25°46'33" E	70.53'
L12	S 01°11'46" W	5.14'

- ⊠ Fence Post
- 1/2" Pipe Found
- 5/8" Rebar Found unless noted
- ⬢ 5/8" Capped Pin Found "Baker"
- ◆ 5/8" Capped Pin Found "RLK"
- ⬠ 5/8" Capped Pin Found "Shamp"
- ⊞ Mag Nail Found
- 5/8" Capped Pin Set "Galbraith"
- △ Rail Road Spike Set
- ⊞ Mag Nail Set on surface over pin
- Point
- R Record
- M Measured
- R&U Record & Used
- R&M Record & Meas.

20200008124
B: 19 P: 4048
FILED FOR RECORD IN
HOLMES COUNTY, OH
ANITA HALL, COUNTY RECORDER
05/04/2020 03:28 PM
PLAT MED. 43.20
PAGES: 1
ORV 271 7465
ORV 271 7480
ORV 271 7489

Basis of Bearing from Grid North Ohio State
Plane Coordinate System, North Zone, NAD 83.



- A Jeffrey R. Barkman
Cheryl Ann Barkman
O.R. Vol. 270 Page 2324
PPN 330007000
- B Jeffrey R. Barkman
Cheryl Ann Barkman
O.R. Vol. 270 Page 2324
PPN 3300134001
- C Jeffrey R. Barkman
Cheryl Ann Barkman
O.R. Vol. 270 Page 2324
PPN 3300134002
- D Paul D. Shetler, co-trustee
Mary Ann Shetler, co-trustee
O.R. Vol. 255 Page 1278
PPN 330004000
- E Paul D. Shetler, co-trustee
Mary Ann Shetler, co-trustee
O.R. Vol. 255 Page 1278
PPN 330006000
- F Kenneth D. Keim
Rosanna Marie Keim
O.R. Vol. 238 Page 2377
PPN 330006001
- G Alan Yoder
Lena Yoder
O.R. Vol. 249 Page 4165
PPN 3300210001
- H Larry D. and Eugene E. Schlabach
Deed Vol. 251 Page 452
PPN 3300211000
- I Alan M. Yoder
Lena Yoder
O.R. Vol. 269 Page 6406
PPN 3300289000
- J Alan M. Yoder
Lena Yoder
O.R. Vol. 115 Page 73
PPN 3300134003
- K Alan M. Yoder
Lena Yoder
O.R. Vol. 169 Page 2084
O.R. Vol. 182 Page 1288
PPN 3300290001
- L Alan M. Yoder
Lena Yoder
O.R. Vol. 269 Page 6406
PPN 3300290000
- M Kenneth W. Hostetler
Deed Vol. 238 Page 122
PPN 1200020000
- O Alan M. Yoder
Lena Yoder
O.R. Vol. 269 Page 6406
PPN 120004001



I certify this survey to be correct to the best of my knowledge.

Caleb Jerome Galbraith
Date: January 4, 2020
Job ID: 18919-H15
Pioneer Surveying & Services, LLC.
5434 Township Road 377
Millersburg, Ohio 44654
Phone: 330-231-0497
Email: caleb@pioneersurveyingandservices.com

PLAT APPROVED

2/13/2020 JP

APPROVED FOR TRANSFER ONLY
NO SUBDIVISION PLAT REQUIRED
(O.R.C. 711.001 & 711.131)
Lot(s) not for building unless
approved by Board of Health
HOLMES CO. PLANNING COMMISSION
By: _____ Date: 2/10/2020

