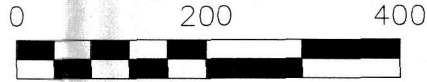




8 0 7 3 1 6 2
Tx:4034809

PRAIRIE TOWNSHIP
N.E. QTR. SECTION 32
T-14 N; R-13 W
HOLMES COUNTY, OHIO

SURVEYED FOR: PHYLLIS GREEN



SCALE: 1"=200'

- 5/8" REBAR FOUND UNLESS OTHERWISE NOTED
- 5/8" REBAR SET WITH I.D. CAP I.D. CAP MARKED "BAKER 6938"

REFERENCES

- O.R. VOL. 77 PAGE 848
- O.R. VOL. 258 PAGE 2425
- O.R. VOL. 206 PAGE 1663
- PLAT VOL. 2 PAGE 285
- PLAT VOL. 7 PAGE 53
- PLAT VOL. 17 PAGE 890

BEARINGS FROM OHIO STATE PLANE
COORDINATE SYSTEM, NORTH ZONE,
N.A.D. 83

201900005889

B: 19 P: 3958

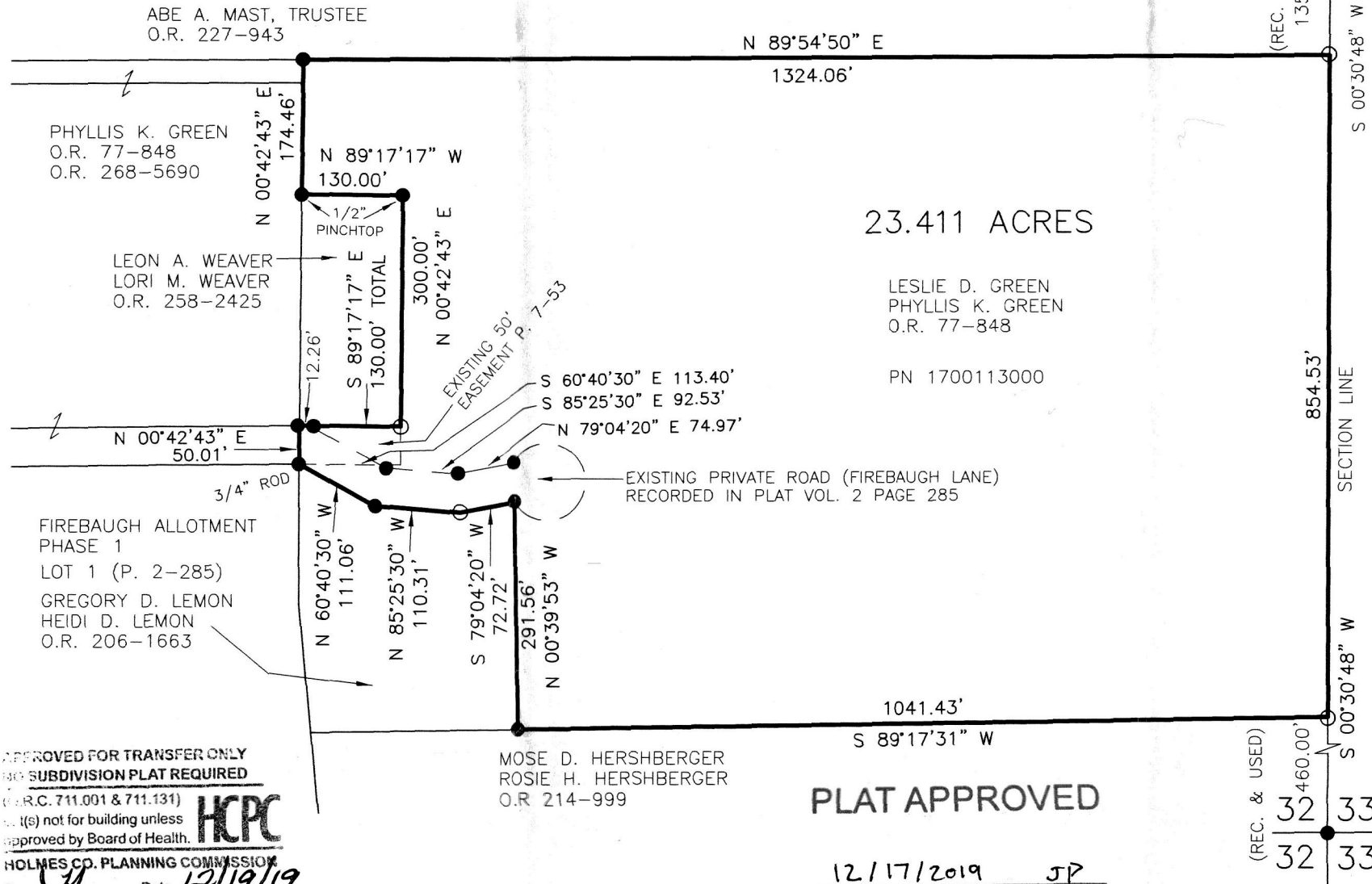
FILED FOR RECORD IN
HOLMES COUNTY, OH
ANITA HALL, COUNTY RECORDER

12/19/2019 11:11 AM

SMALL PLAT . 40.00

PAGES: 1

ORV 270 PG 3005



23.411 ACRES

LESLIE D. GREEN
PHYLLIS K. GREEN
O.R. 77-848

PN 1700113000

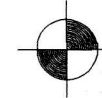
PLAT APPROVED

12/17/2019 JP



I CERTIFY THIS SURVEY TO BE CORRECT
TO THE BEST OF MY KNOWLEDGE.

AL
 AARON L. GERBER P.S. 8379
 DATE: OCTOBER 3, 2019
 ALG\TAB
 FILE NAME: WORK5\S-462-19\ALG-MLD



BAKER SURVEYING, LLC
138 N. CLAY STREET
MILLERSBURG, OHIO 44654

PH. 330-674-4788

FAX 330-674-6027

EMAIL: bakersurveying@gmail.com

APPROVED FOR TRANSFER ONLY
SUBDIVISION PLAT REQUIRED

(R.C. 711.001 & 711.131)

It(s) not for building unless
approved by Board of Health.



HOLMES CO. PLANNING COMMISSION

By *JP* Date 12/19/19