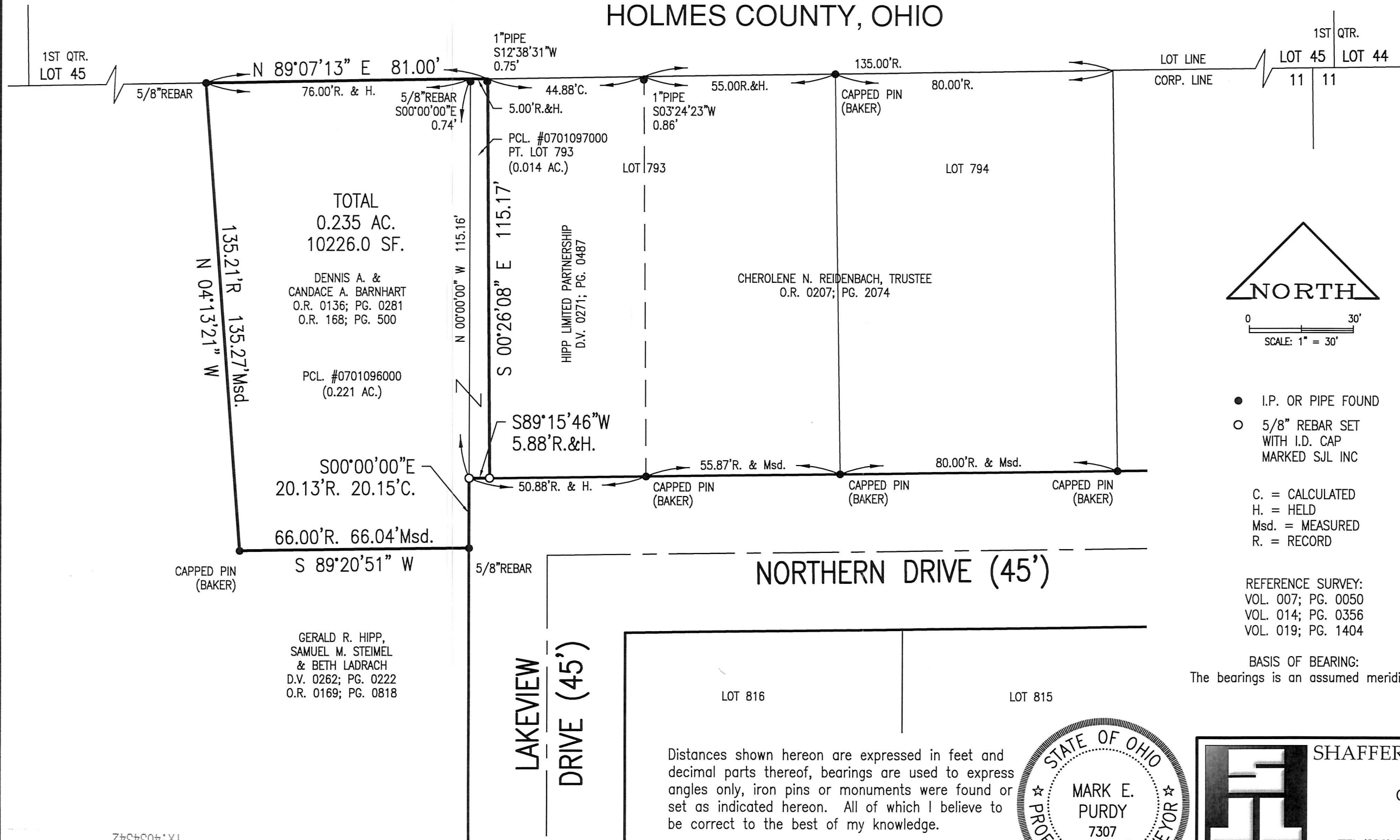


RETRACEMENT SURVEY  
 VILLAGE OF MILLERSBURG  
 T-9N ; R-7W  
 N.W. QTR. SEC. 11  
 HARDY TOWNSHIP  
 HOLMES COUNTY, OHIO

201900005244  
 B: 19 P: 3919  
 FILED FOR RECORD IN  
 HOLMES COUNTY, OH  
 ANITA HALL, COUNTY RECORDER  
 11/12/2019 03:24 PM  
 SMALL PLAT . 40.00  
 PAGES: 1

ORV 269 PG 7199

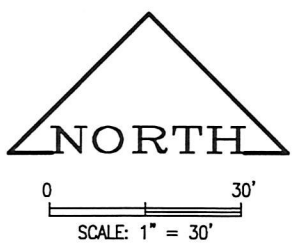


TOTAL  
 0.235 AC.  
 10226.0 SF.

DENNIS A. &  
 CANDACE A. BARNHART  
 O.R. 0136; PG. 0281  
 O.R. 168; PG. 500

PCL. #0701096000  
 (0.221 AC.)

GERALD R. HIPPI,  
 SAMUEL M. STEIMEL  
 & BETH LADRACH  
 D.V. 0262; PG. 0222  
 O.R. 0169; PG. 0818



- I.P. OR PIPE FOUND
  - 5/8" REBAR SET WITH I.D. CAP MARKED SJL INC
- C. = CALCULATED  
 H. = HELD  
 Msd. = MEASURED  
 R. = RECORD

APPROVED FOR TRANSFER ONLY  
 NO SUBDIVISION PLAT REQUIRED  
 (O.R.C. 711.001 & 711.131)  
 Lot(s) not for building unless approved by Board of Health.  
 HCPC  
 HOLMES CO. PLANNING COMMISSION  
 By: *[Signature]* Date: 8/23/19

REFERENCE SURVEY:  
 VOL. 007; PG. 0050  
 VOL. 014; PG. 0356  
 VOL. 019; PG. 1404

PLAT APPROVED

BASIS OF BEARING:  
 The bearings is an assumed meridian.

8/22/2019 TD

Distances shown hereon are expressed in feet and decimal parts thereof, bearings are used to express angles only, iron pins or monuments were found or set as indicated hereon. All of which I believe to be correct to the best of my knowledge.

By: *[Signature]* 7-31-19  
 Mark E. Purdy, P.S. #7307 Date



SHAFFER, JOHNSTON, LICHTENWALTER & ASSOCIATES, INC.  
 Consulting Engineers & Surveyors  
 3477 Commerce Parkway, Suite C  
 Wooster, Ohio 44691  
 TEL (330) 345-6377 FAX (330) 345-6725 EMAIL sjl@sjl-inc.com

DRAWN C. Falb	CHECKED	SCALE 1" = 30'	DATE 07/17/19
DWG NO: SW-5497		JOB NO: SW-5497	
			SHEET 1 OF 1

