

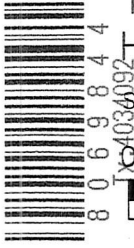
HARDY TOWNSHIP
 N.E. QTR. SECTION 24
 T-9 N; R-6 W
 HOLMES COUNTY, OHIO

201900004862
 B: 19 P: 3893
 FILED FOR RECORD IN
 HOLMES COUNTY, OH
 ANITA HALL, COUNTY RECORDER
 10/23/2019 12:15 PM
 SMALL PLAT . 40.00
 PAGES: 1

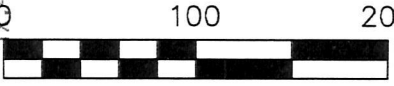
APPROVED FOR TRANSFER ONLY
 NO SUBDIVISION PLAT REQUIRED
 (O.R.C. 711.001 & 711.131)
 (not for building unless
 approved by Board of Health.)
 HOLMES CO. PLANNING COMMISSION
 Date 10/23/19

PLAT APPROVED

10/15/2019 JP



SURVEYED FOR: BARB VANDEVEER



SCALE: 1"=100'

- STONE FOUND
- ▲ R.R. SPIKE FOUND
- 5/8" REBAR FOUND
UNLESS OTHERWISE NOTED
- △ R.R. SPIKE SET
- 5/8" REBAR SET WITH I.D. CAP
I.D. CAP MARKED "BAKER 6938"

REFERENCES

- O.R. VOL. 259 PAGE 4876
- O.R. VOL. 63 PAGE 90
- PLAT VOL. 17 PAGE 706
- BEARINGS FROM PLAT VOL. 17 PAGE 706



I CERTIFY THIS SURVEY TO BE CORRECT
 TO THE BEST OF MY KNOWLEDGE.

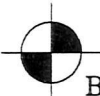
Donald C. Baker

DONALD C. BAKER P.S. 6938

DATE: OCTOBER 2, 2019

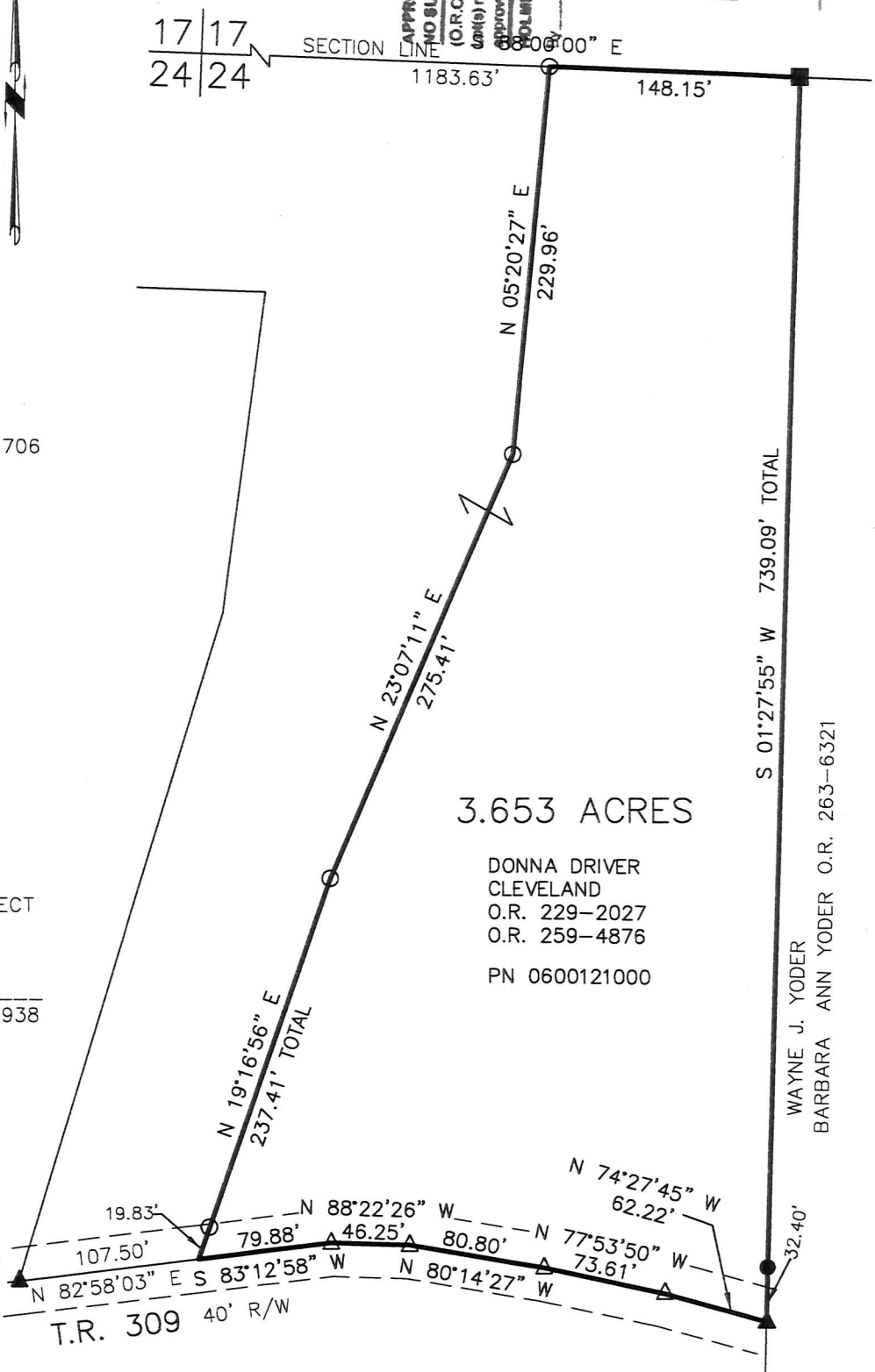
KES\CES

FILE NAME: WORK6\S-553-19\MLD



BAKER SURVEYING, LLC
 138 N. CLAY STREET
 MILLERSBURG, OHIO 44654
 PH. 330-674-4788
 FAX 330-674-6027

ORV 269 Pg 5309



3.653 ACRES

DONNA DRIVER
 CLEVELAND
 O.R. 229-2027
 O.R. 259-4876
 PN 0600121000

S 01°27'55" W 739.09' TOTAL

WAYNE J. YODER
 BARBARA ANN YODER O.R. 263-6321

T.R. 309 40' R/W