



MECHANIC TOWNSHIP
S.W. QTR. SECTION 22
T-8 N; R-6 W
HOLMES COUNTY, OHIO

SURVEYED FOR: HENRY RABER

0 300 600



SCALE: 1"=300'

- STONE FOUND
- 5/8" REBAR FOUND
UNLESS OTHERWISE NOTED
- 5/8" REBAR SET WITH I.D. CAP
I.D. CAP MARKED "BAKER 6938"

REFERENCES

- DEED VOL. 230 PAGE 361
- PLAT VOL. 8 PAGE 120
- PLAT VOL. 2 PAGE 573
- PLAT VOL. 19 PAGE 2691

BEARINGS FROM OHIO STATE PLANE COORDINATE SYSTEM, NORTH ZONE, N.A.D. 83



I CERTIFY THIS SURVEY TO BE CORRECT TO THE BEST OF MY KNOWLEDGE.

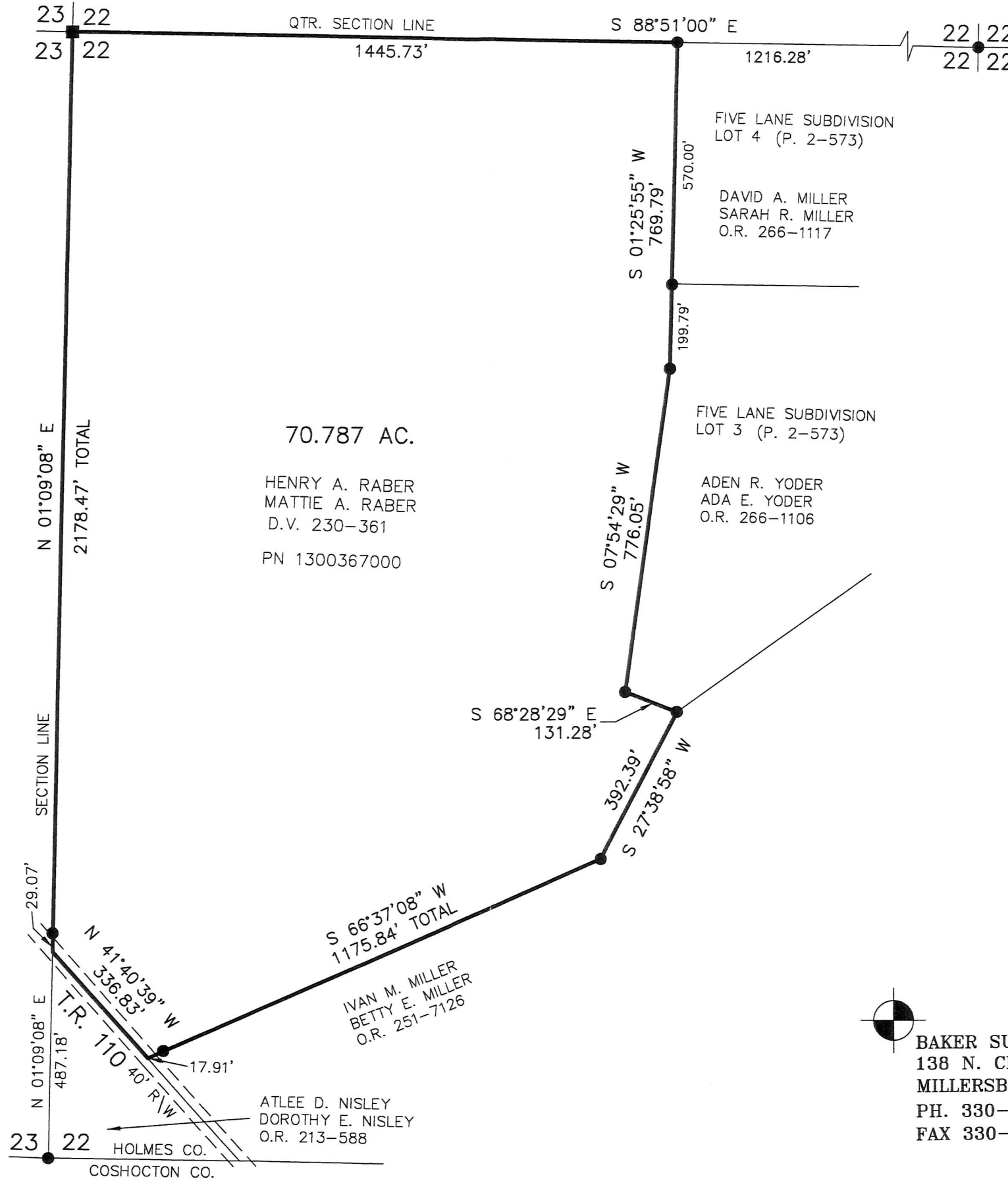
Donald C. Baker

DONALD C. BAKER P.S. 6938

DATE: AUG. 5, 2019

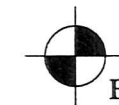
FDB\VJD

FILE NAME: WORK6\S-368-19



201900004126
B: 19 P: 3858
FILED FOR RECORD IN
HOLMES COUNTY, OH
ANITA HALL, COUNTY RECORDER
09/13/2019 12:22 PM
SMALL PLAT . 40.00
PAGES: 1

DRY 269 PG 1820



BAKER SURVEYING, LLC
138 N. CLAY STREET
MILLERSBURG, OHIO 44654
PH. 330-674-4788
FAX 330-674-6027

APPROVED FOR TRANSFER ONLY
NO SUBDIVISION PLAT REQUIRED

(O.R.C. 711.001 & 711.131)
Lot(s) not for building unless
approved by Board of Health.



HOLMES CO. PLANNING COMMISSION
By *[Signature]* Date 9/3/19

PLAT APPROVED

9/3/2019 TD